

Product datasheet for **AP23103PU-N**

TRPC1 (722-733) Goat Polyclonal Antibody

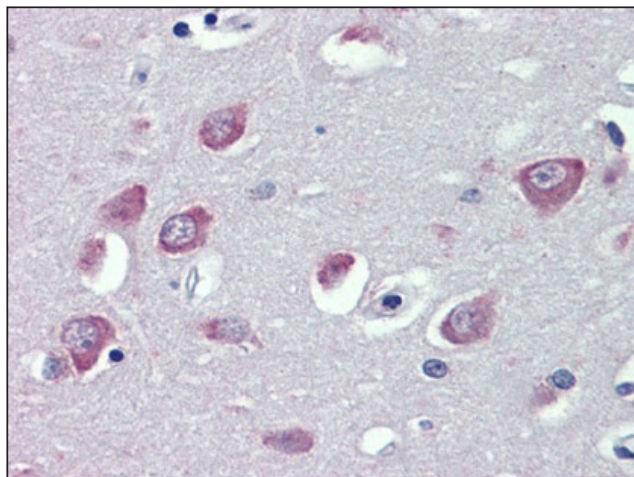
Product data:

Product Type:	Primary Antibodies
Applications:	IHC
Recommended Dilution:	Immunohistochemistry on Paraffin Sections: 3.75 µg/ml.
Reactivity:	Human, Bovine, Canine, Chicken, Equine, Monkey, Mouse, Porcine, Rabbit, Rat
Host:	Goat
Clonality:	Polyclonal
Immunogen:	Synthetic peptide from internal region of human TRPC1
Specificity:	This antibody detects TRPC1 / TRP1 (Internal).
Formulation:	Tris saline, pH 7.3 containing 0.02% sodium azide as preservative and 0.5% BSA as stabilizer State: Aff - Purified State: Liquid purified Ig fraction
Concentration:	lot specific
Purification:	Immunoaffinity Chromatography
Conjugation:	Unconjugated
Storage:	Store the antibody undiluted at 2-8°C for one month or (in aliquots) at -20°C for longer. Avoid repeated freezing and thawing.
Stability:	Shelf life: one year from despatch.
Gene Name:	transient receptor potential cation channel subfamily C member 1
Database Link:	Entrez Gene 22063 Mouse Entrez Gene 89821 Rat Entrez Gene 7220 Human P48995
Background:	Thought to form a receptor-activated non-selective calcium permeant cation channel. Probably is operated by a phosphatidylinositol second messenger system activated by receptor tyrosine kinases or G-protein coupled receptors. Seems to be also activated by intracellular calcium store depletion.
Synonyms:	Transient receptor protein 1, TRP-1
Protein Families:	Druggable Genome, Ion Channels: Transient receptor potential, Transmembrane
Protein Pathways:	Calcium signaling pathway, Huntington's disease, Parkinson's disease

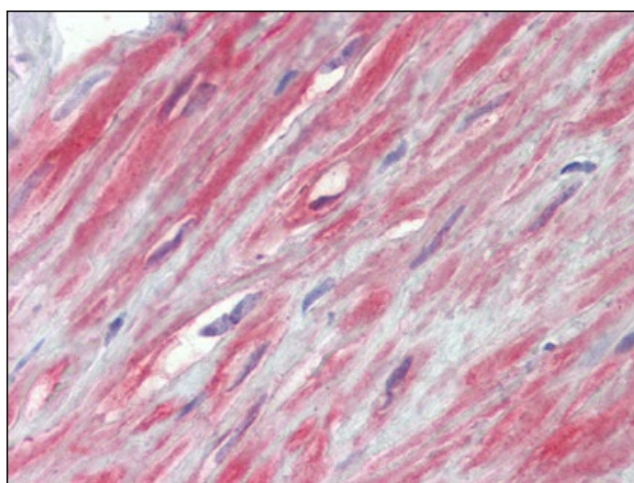


[View online »](#)

Product images:



Brain, cortex, Human: Formalin-Fixed, Paraffin-Embedded (FFPE)



Prostate, fibromuscular stroma, Human:
Formalin-Fixed, Paraffin-Embedded (FFPE)