

Product datasheet for **AP23098PU-N**

HDAC1 (271-477) Rabbit Polyclonal Antibody

Product data:

Product Type:	Primary Antibodies
Applications:	IF, IHC, WB
Recommended Dilution:	Immunocytochemistry. Immunofluorescence: 1/100 - 1/200. Immunohistochemistry on Paraffin Sections: 10 µg/ml. Western Blot: 1/500 - 1/3000.
Reactivity:	Bovine, Human, Mouse, Rat, Zebrafish
Host:	Rabbit
Clonality:	Polyclonal
Immunogen:	Recombinant protein fragment containing a sequence corresponding to a region within amino acids 271 and 477 of HDAC1
Specificity:	This antibody detects HDAC1 at aa 271-477.
Formulation:	PBS, pH 7, 1% BSA, 20% Glycerol, 0.01% Thimerosal State: Aff - Purified State: Liquid Ig fraction
Purification:	Immunoaffinity Chromatography
Conjugation:	Unconjugated
Storage:	Store (in aliquots) at -20 °C. Dilute only prior to immediate use. Avoid repeated freezing and thawing.
Stability:	Shelf life: one year from despatch.
Gene Name:	histone deacetylase 1
Database Link:	Entrez Gene 297893 Rat Entrez Gene 433759 Mouse Entrez Gene 3065 Human Q13547
Background:	Responsible for the deacetylation of lysine residues on the N-terminal part of the core histones (H2A, H2B, H3 and H4). Histone deacetylation gives a tag for epigenetic repression and plays an important role in transcriptional regulation, cell cycle progression and developmental events. Histone deacetylases act via the formation of large multiprotein complexes. Deacetylates SP proteins, SP1 and SP3, and regulates their function.



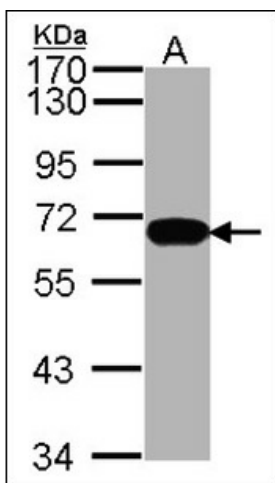
[View online »](#)

Synonyms: Histone deacetylase 1, HD1, RPD3L1

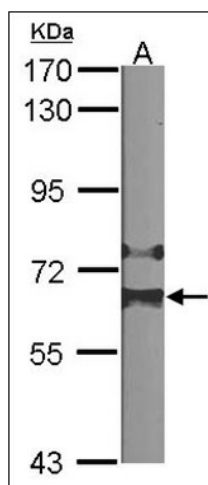
Protein Families: Adult stem cells, Druggable Genome, Stem cell - Pluripotency, Stem cell relevant signaling - DSL/Notch pathway, Transcription Factors

Protein Pathways: Cell cycle, Chronic myeloid leukemia, Huntington's disease, Notch signaling pathway, Pathways in cancer

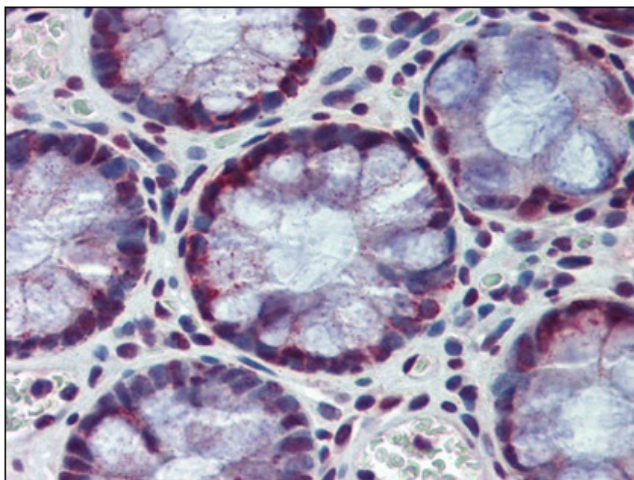
Product images:



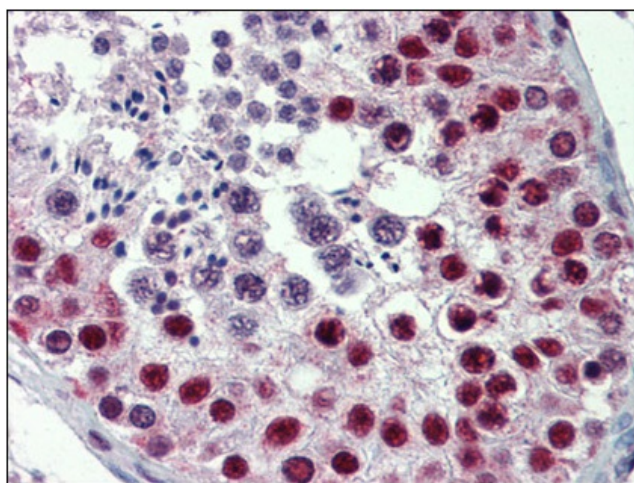
Western Blot Image: Sample (30 ug of whole cell lysate). A: HeLa. 7.5% SDS PAGE. HDAC1 antibody. HDAC1 antibody diluted at 1:1000.



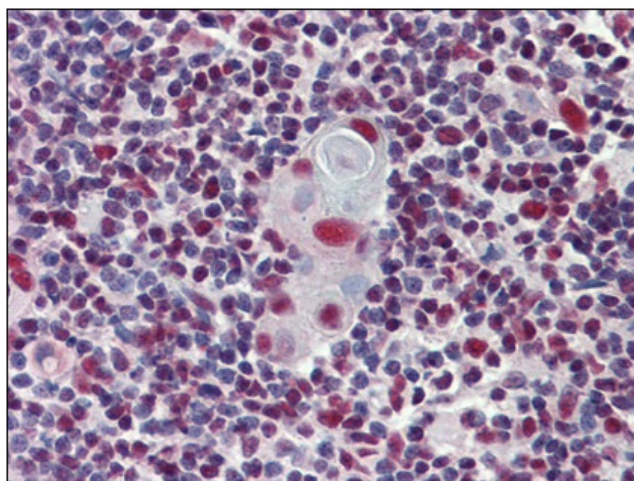
Western Blot Image: Sample (30 ug of whole cell lysate). A: NIH-3T3. 7.5% SDS PAGE. HDAC1 antibody diluted at 1:1000.



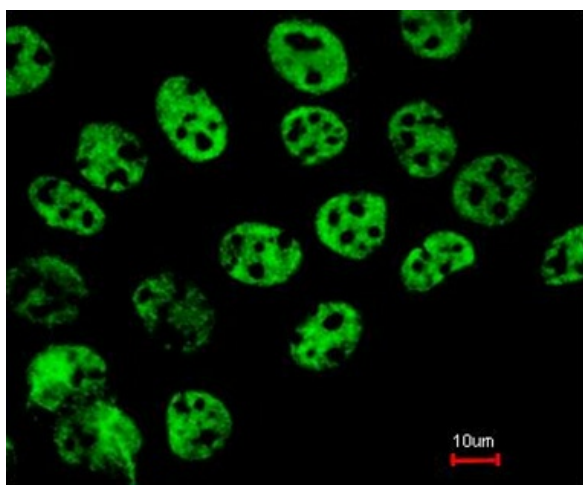
Human Colon: Formalin-Fixed, Paraffin-Embedded (FFPE)



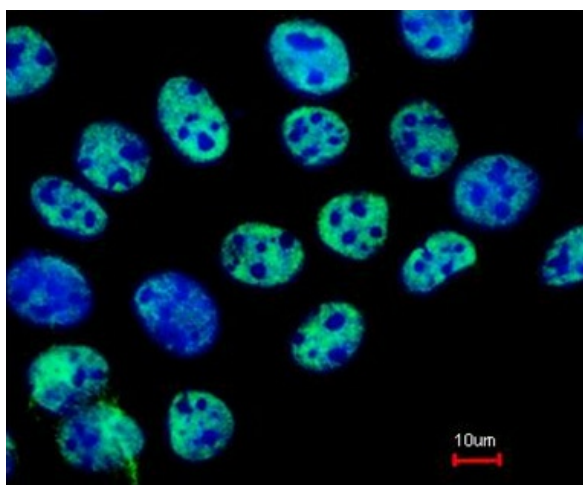
Human Testis: Formalin-Fixed, Paraffin-Embedded (FFPE)



Human Thymus: Formalin-Fixed, Paraffin-Embedded (FFPE)



Immunofluorescence analysis of paraformaldehyde-fixed A431, using HDAC1 antibody at 1:200 dilution.



Immunofluorescence analysis of paraformaldehyde-fixed A431, merged with DNA probe, using HDAC1 antibody at 1:200 dilution.