

Product datasheet for **AP23096PU-N**

FANCC (1-275) Rabbit Polyclonal Antibody

Product data:

Product Type:	Primary Antibodies
Applications:	IF, IHC, WB
Recommended Dilution:	Immunocytochemistry. Immunofluorescence: 1/100 - 1/200. Immunohistochemistry on Paraffin Sections: 10 µg/ml. Western Blot: 1/500 - 1/3000.
Reactivity:	Human, Mouse
Host:	Rabbit
Clonality:	Polyclonal
Immunogen:	Recombinant Human protein fragment containing a sequence corresponding to a region within amino acids 1 and 275 of FANCC
Specificity:	This antibody detects FANCC at aa 1-275.
Formulation:	0.1 M Tris-glycine, pH 7, 10% Glycerol, 0.01% Thimerosal State: Aff - Purified State: Liquid Ig fraction
Concentration:	lot specific
Purification:	Immunoaffinity Chromatography
Conjugation:	Unconjugated
Storage:	Store (in aliquots) at -20 °C. Dilute only prior to immediate use. Avoid repeated freezing and thawing.
Stability:	Shelf life: one year from despatch.
Gene Name:	Fanconi anemia complementation group C
Database Link:	Entrez Gene 14088 Mouse Entrez Gene 2176 Human Q00597



[View online »](#)

Background:

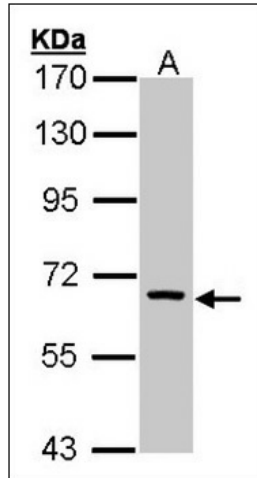
The Fanconi anemia complementation group (FANC) currently includes FANCA, FANCB, FANCC, FANCD1 (also called BRCA2), FANCD2, FANCE, FANCF, FANCG, FANCI, FANCI (also called BRIP1), FANCL, FANCM and FANCN (also called PALB2). The previously defined group FANCH is the same as FANCA. Fanconi anemia is a genetically heterogeneous recessive disorder characterized by cytogenetic instability, hypersensitivity to DNA crosslinking agents, increased chromosomal breakage, and defective DNA repair.

Synonyms:

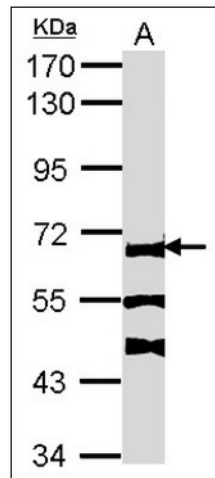
Fanconi anemia group C protein, FAC, FACC

Protein Families:

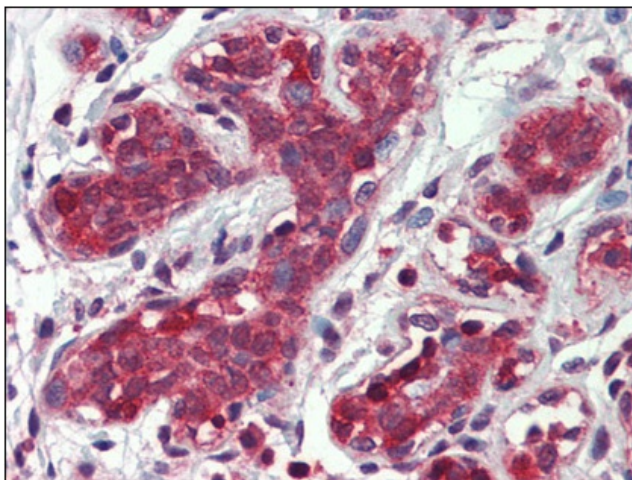
Druggable Genome

Product images:


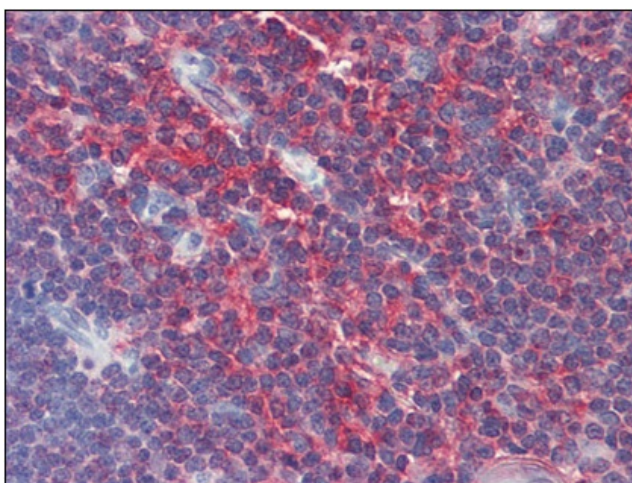
Western Blot Image: Sample (30 ug of whole cell lysate). A: H1299. 7.5% SDS PAGE. FANCC antibody diluted at 1:1000



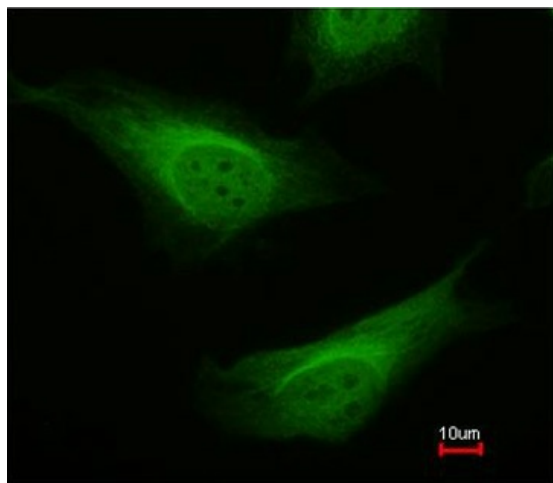
Western Blot Image: Sample (30 ug of whole cell lysate). A: NIH-3T3. 7.5% SDS PAGE. FANCC antibody. FANCC antibody diluted at 1:1000.



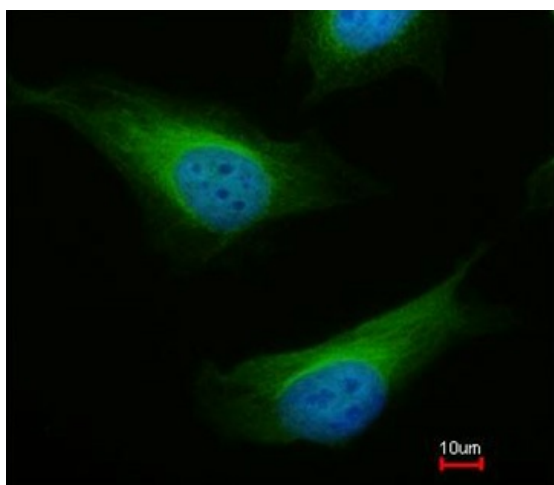
Human Breast: Formalin-Fixed, Paraffin-Embedded (FFPE)



Human Thymus: Formalin-Fixed, Paraffin-Embedded (FFPE)



Immunofluorescence analysis of paraformaldehyde-fixed HeLa, using FANCC antibody at 1:200 dilution.



Immunofluorescence analysis of paraformaldehyde-fixed HeLa, merged with DNA probe, using FANCC antibody at 1:200 dilution.