

Product datasheet for **AP23094PU-N**

GPR 164 (OR51E1) Rabbit Polyclonal Antibody

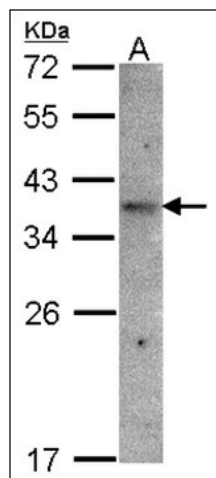
Product data:

Product Type:	Primary Antibodies
Applications:	IHC, WB
Recommended Dilution:	Immunohistochemistry on Paraffin Sections: 20 µg/ml. Western Blot: 1/500 - 1/3000.
Reactivity:	Human
Host:	Rabbit
Clonality:	Polyclonal
Immunogen:	Synthetic human peptide - KLH conjugated
Specificity:	This antibody detects GPR164 / OR51E1.
Formulation:	PBS, pH 7, 50% Glycerol, 0.01% Thimerosal State: Purified State: Liwuid Ig fraction
Concentration:	lot specific
Purification:	Immunoaffinity Chromatography
Conjugation:	Unconjugated
Storage:	Store (in aliquots) at -20 °C. Dilute only prior to immediate use. Avoid repeated freezing and thawing.
Stability:	Shelf life: one year from despatch.
Gene Name:	olfactory receptor family 51 subfamily E member 1
Database Link:	Entrez Gene 143503 Human Q8TCB6
Background:	D-GPCR, identified in 2004, is an Orphan-U GPCR with an unknown ligand.
Synonyms:	Olfactory receptor 51E1, G-protein coupled receptor 164, D-GPCR, OR51E1P, OR52A3P, POGR, PSGR2
Protein Families:	Druggable Genome, GPCR, Transmembrane
Protein Pathways:	Olfactory transduction

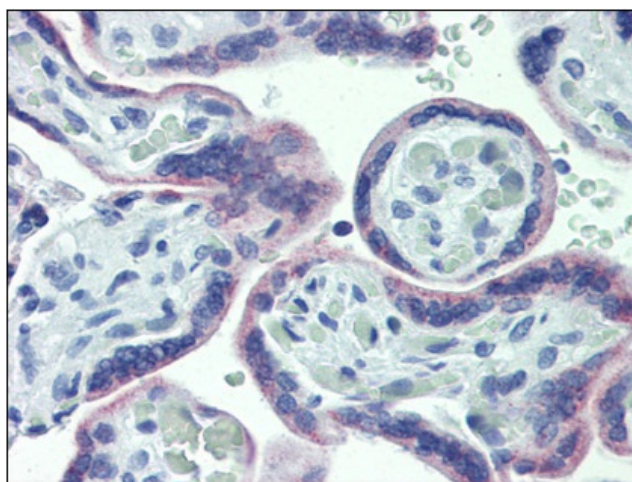


[View online »](#)

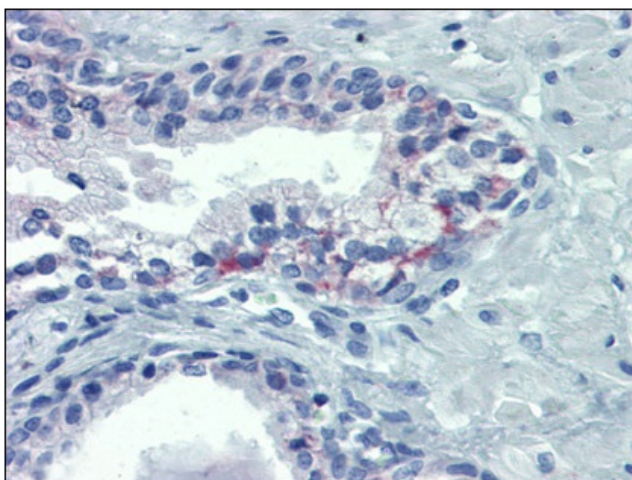
Product images:



Western blot: Sample (30 ug of whole cell lysate). A:Raji. 12% SDS PAGE. OR51E1 antibody diluted at 1:1500.



Human Placenta: Formalin-Fixed, Paraffin-Embedded (FFPE)



Human Prostate: Formalin-Fixed, Paraffin-Embedded (FFPE)

