

Product datasheet for **AP23092PU-N**

HTR2C Rabbit Polyclonal Antibody

Product data:

Product Type:	Primary Antibodies
Applications:	IHC, WB
Recommended Dilution:	Immunohistochemistry on Paraffin Sections: 10 µg/ml. Western Blot: 1/500 - 1/3000.
Reactivity:	Human
Host:	Rabbit
Clonality:	Polyclonal
Immunogen:	Synthetic peptide containing a sequence corresponding to a region within amino acids 387 and 446 of Human 5HT2C Receptor.
Specificity:	This antibody detects Human Serotonin receptor 2C (HTR2C). Other species not tested.
Formulation:	0.1 M Tris-glycine, pH 7, 10% Glycerol, 0.01% Thimerosal State: Purified State: Liquid purified Ig fraction
Purification:	Immunoaffinity Chromatography
Conjugation:	Unconjugated
Storage:	Upon receipt, store undiluted (in aliquots) at -20°C. Avoid repeated freezing and thawing.
Stability:	Shelf life: one year from despatch.
Gene Name:	5-hydroxytryptamine receptor 2C
Database Link:	Entrez Gene 3358 Human P28335



[View online »](#)

Background:

5-HT_{2C}, a Serotonin Receptor previously termed 5-HT_{1C}, activates phospholipase C, resulting in a transient increase in intracellular calcium and activation of protein kinase C. Mutant mice lacking functional 5-HT_{2C} receptor are overweight due to abnormal feeding behavior and are prone to epileptic seizures. Therefore, agonists of the 5-HT_{2C} receptor such as m-chlorophenylpiperazine (mCPP) may be potential drugs for the treatment of obesity. However, mCPP also has unpleasant side effects such as anxiety and nausea in humans. Most psychedelic drugs bind 5-HT_{2A} and 5-HT_{2C} receptors, and their hallucinogenicity correlates with binding affinity.

Synonyms:

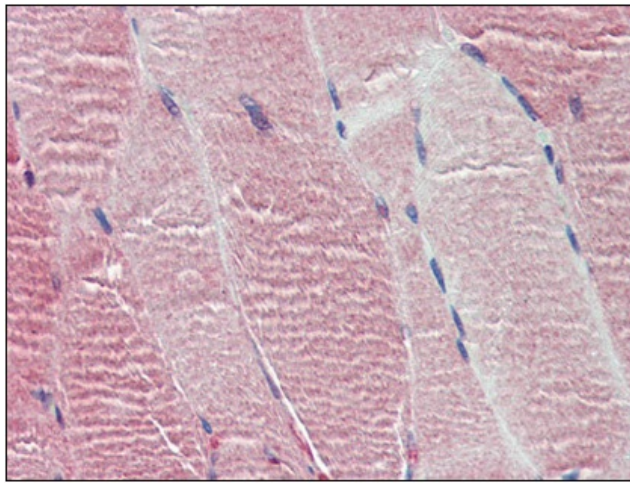
HTR1C, 5HT-1C, 5-hydroxytryptamine receptor 2C, 5-HTR2C, 5-HT-2C, 5-HT_{2C}

Protein Families:

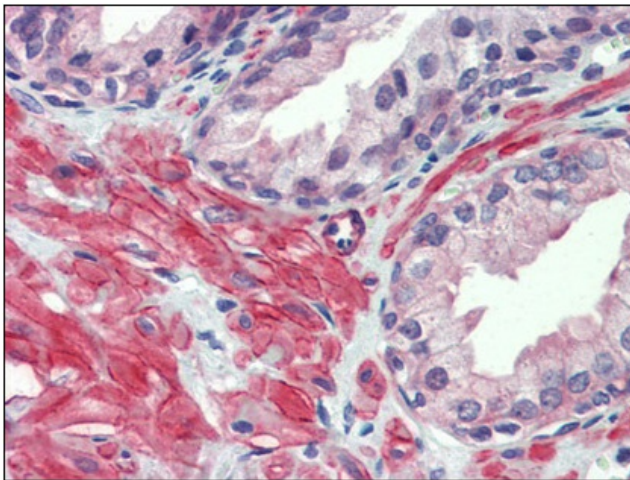
Druggable Genome, GPCR, Transmembrane

Protein Pathways:

Calcium signaling pathway, Gap junction, Neuroactive ligand-receptor interaction

Product images:

Human Skeletal Muscle: Formalin-Fixed, Paraffin-Embedded (FFPE)



Human Prostate: Formalin-Fixed, Paraffin-Embedded (FFPE)