

Product datasheet for **AP23091PU-N**

GALR2 Rabbit Polyclonal Antibody

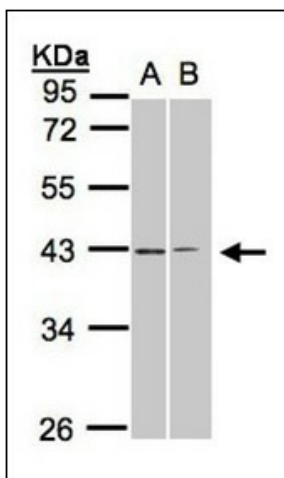
Product data:

Product Type:	Primary Antibodies
Applications:	IHC, WB
Recommended Dilution:	Immunohistochemistry on Paraffin Sections: 10 µg/ml. Western Blot: 1/500 - 1/3000.
Reactivity:	Human
Host:	Rabbit
Clonality:	Polyclonal
Immunogen:	Synthetic human peptide - KLH conjugated
Specificity:	This antibody detects GALR2.
Formulation:	0.1 M Tris-glycine, pH 7, 10% Glycerol, 0.01% Thimerosal State: Purified State: Liquid Ig fraction
Concentration:	lot specific
Purification:	Immunoaffinity Chromatography
Conjugation:	Unconjugated
Storage:	Store (in aliquots) at -20 °C. Dilute only prior to immediate use. Avoid repeated freezing and thawing.
Stability:	Shelf life: one year from despatch.
Gene Name:	galanin receptor 2
Database Link:	Entrez Gene 8811 Human O43603
Background:	GalR2 is a Galanin Receptor that is involved in neuroendocrine regulation and control of feeding behavior. In contrast to GalR1, the primary signaling mechanism of GalR2 is through phospholipase C/protein kinase C.
Synonyms:	GALR-2, GALNR2, GAL2-R, Galanin receptor type 2
Protein Families:	Druggable Genome, Transmembrane
Protein Pathways:	Neuroactive ligand-receptor interaction

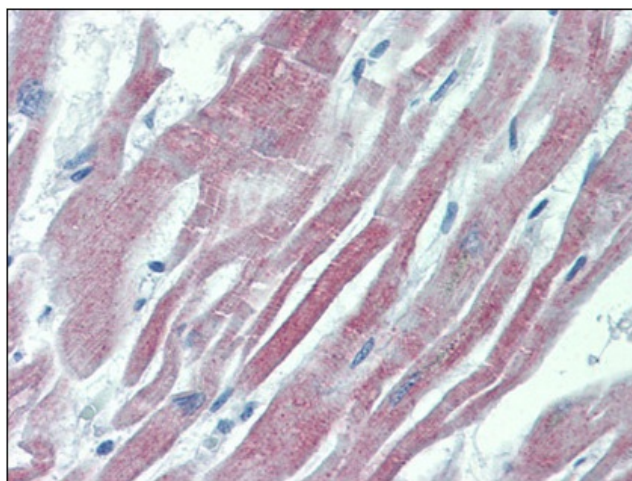


[View online »](#)

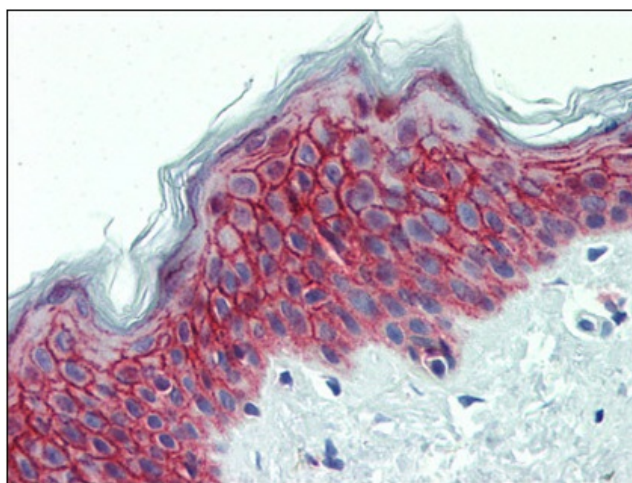
Product images:



Western blot: Sample (30 ug whole cell lysate).
A:293T. B:H1299. 10% SDS PAGE. GALR2 antibody
diluted at 1:1000.



Human Heart: Formalin-Fixed, Paraffin-
Embedded (FFPE)



Human Skin: Formalin-Fixed, Paraffin-Embedded (FFPE)