

Product datasheet for **AP23090PU-N**

beta Actin (ACTB) Rabbit Polyclonal Antibody

Product data:

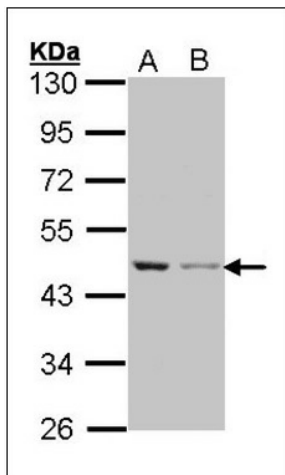
| | |
|-----------------------|--|
| Product Type: | Primary Antibodies |
| Applications: | IF, IHC, WB |
| Recommended Dilution: | Immunocytochemistry. Immunofluorescence: 1/100 - 1/200. Immunohistochemistry on Paraffin Sections: 10 µg/ml. Western Blot: 1/500 - 1/3000. |
| Reactivity: | Human |
| Host: | Rabbit |
| Clonality: | Polyclonal |
| Immunogen: | Synthetic human peptide - KLH conjugated |
| Specificity: | This antibody detects Actin beta / ACTB. |
| Formulation: | 0.1 M Tris-glycine, pH 7, 10% Glycerol, 0.01% Thimerosal State: Purified State: Liquid Ig fraction |
| Concentration: | lot specific |
| Purification: | Immunoaffinity Chromatography |
| Conjugation: | Unconjugated |
| Storage: | Store (in aliquots) at -20 °C. Dilute only prior to immediate use. Avoid repeated freezing and thawing. |
| Stability: | Shelf life: one year from despatch. |
| Gene Name: | actin, beta |
| Database Link: | Entrez Gene 60 Human P60709 |
| Background: | Actin is a highly conserved protein that participates in a wide variety of cellular functions in eukaryotes including muscle contraction, amoeboid movement, cytokinesis and mitotic division. Beta actin is ubiquitously expressed in all eukaryotic cells. |
| Synonyms: | Actin cytoplasmic 1, Beta-Actin |
| Protein Families: | ES Cell Differentiation/IPS |



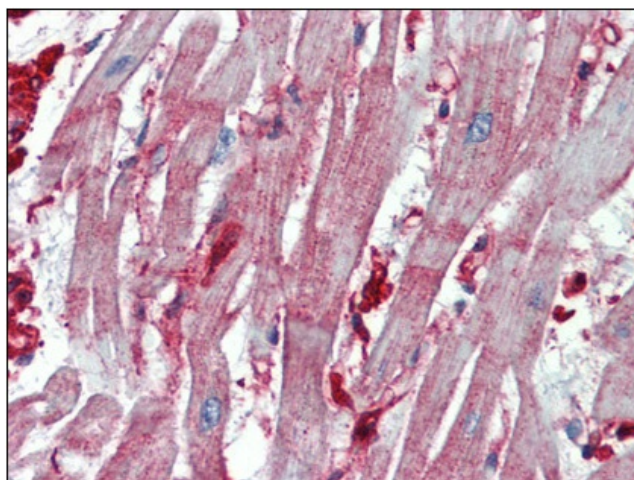
[View online »](#)

Protein Pathways:

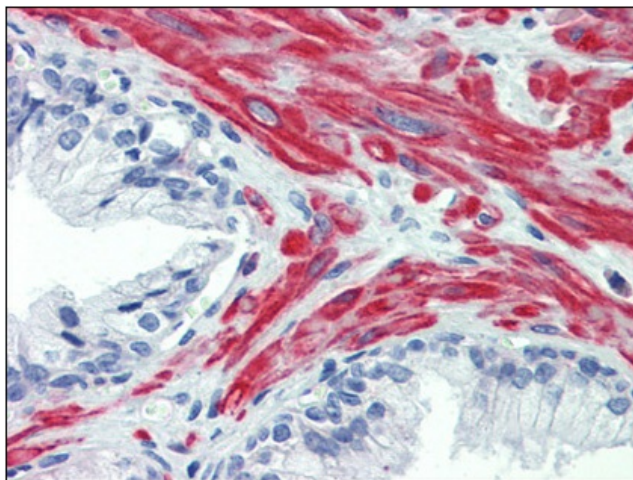
Adherens junction, Arrhythmogenic right ventricular cardiomyopathy (ARVC), Dilated cardiomyopathy, Focal adhesion, Hypertrophic cardiomyopathy (HCM), Leukocyte transendothelial migration, Pathogenic Escherichia coli infection, Regulation of actin cytoskeleton, Tight junction, Vibrio cholerae infection, Viral myocarditis

Product images:


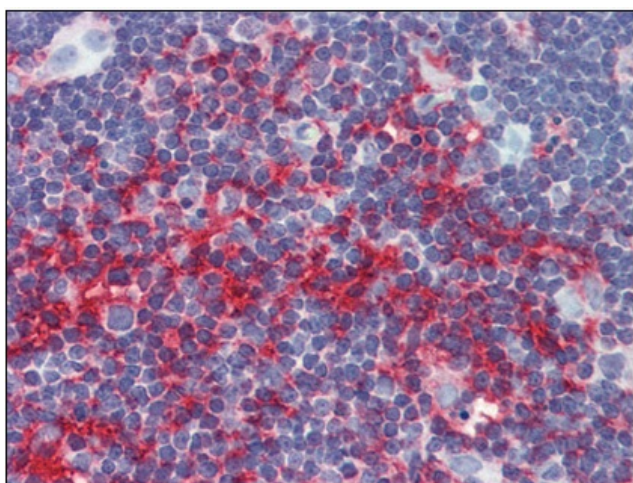
Western blot: Sample (30 ug of whole cell lysate).
A: A431. B: H1299. 10% SDS PAGE. ACTB antibody diluted at 1:1000.



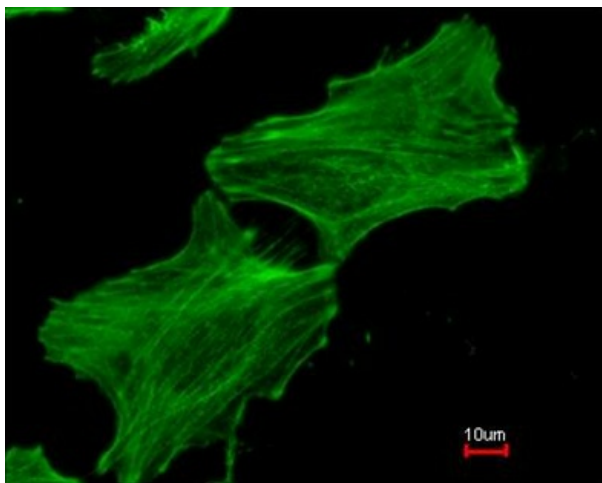
Human Heart: Formalin-Fixed, Paraffin-Embedded (FFPE)



Human Prostate: Formalin-Fixed, Paraffin-Embedded (FFPE)



Human Thymus: Formalin-Fixed, Paraffin-Embedded (FFPE)



Immunofluorescence analysis of methanol-fixed HeLa, using Beta actin antibody at 1:300 dilution.