

Product datasheet for **AP23085PU-N**

GAPDH (9-323) Rabbit Polyclonal Antibody

Product data:

Product Type:	Primary Antibodies
Applications:	IF, IHC, WB
Recommended Dilution:	Immunocytochemistry: 1/100 - 1/200. Immunofluorescence: 1/100 - 1/200. Immunohistochemistry on Paraffin Sections: 10 µg/ml. Western Blot: 1/5000 - 1/20000.
Reactivity:	Bovine, Canine, Drosophila, Feline, Human, Mouse, Rabbit, Rat
Host:	Rabbit
Clonality:	Polyclonal
Immunogen:	Recombinant protein fragment corresponding to a region within amino acids 9 and 323 of GAPDH
Specificity:	This antibody detects GAPDH at aa 9-323.
Formulation:	PBS, 20% glycerol (pH 7), 0.025% proclin State: Aff - Purified State: Liquid Ig fraction
Concentration:	lot specific
Purification:	Immunoaffinity Chromatography
Conjugation:	Unconjugated
Storage:	Store (in aliquots) at -20 °C. Dilute only prior to immediate use. Avoid repeated freezing and thawing.
Stability:	Shelf life: one year from despatch.
Gene Name:	glyceraldehyde-3-phosphate dehydrogenase
Database Link:	Entrez Gene 14433 Mouse Entrez Gene 24383 Rat Entrez Gene 2597 Human P04406



[View online »](#)

Background: GAPDH catalyzes an important energy-yielding step in carbohydrate metabolism, the reversible oxidative phosphorylation of glyceraldehyde-3-phosphate in the presence of inorganic phosphate and nicotinamide adenine dinucleotide (NAD). The enzyme exists as a tetramer of identical chains. Many pseudogenes similar to this locus are present in the human genome.

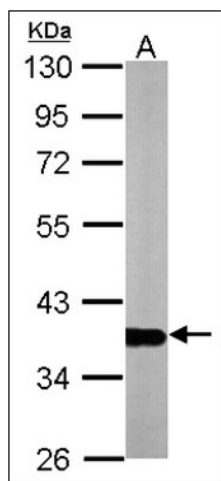
Synonyms: GAPD, CDABP0047

Note: The antibody is predicted to cross react with these species based on the following homology: Rat (94%), Rabbit (94%), cow (94%), Dog (95%), Cat (96%).

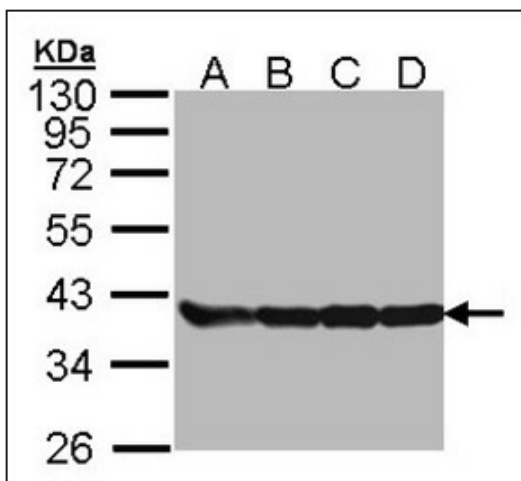
Protein Families: ES Cell Differentiation/IPS

Protein Pathways: Alzheimer's disease, Glycolysis / Gluconeogenesis, Metabolic pathways

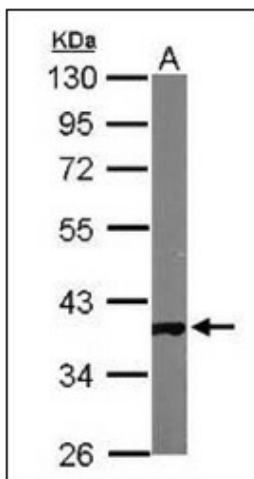
Product images:



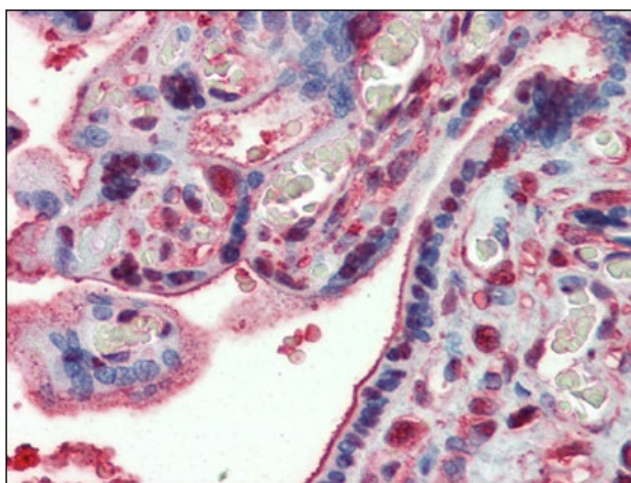
Western blot: Sample (10 ug of whole cell lysate). A: Adult zebrafish. 10% SDS PAGE. GAPDH antibody diluted at 1:1000.



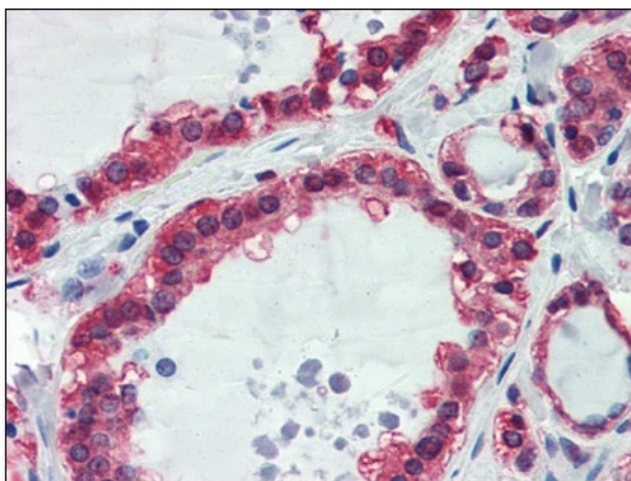
Western blot: Sample (30 ug of whole cell lysate). A: 293T. B: A431. C: H1299. D: HeLa. 10% SDS PAGE. GAPDH antibody diluted at 1:5000.



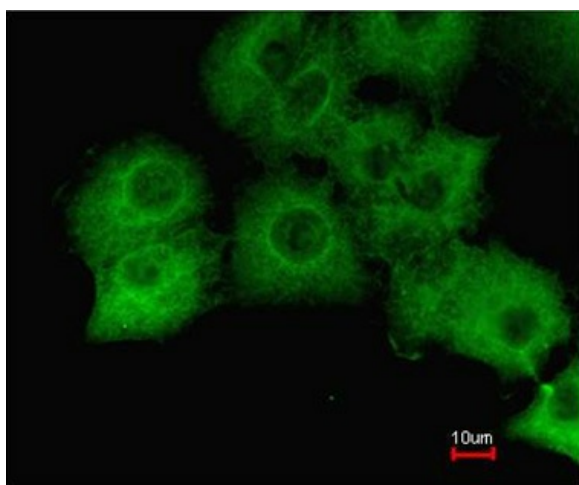
Western blot: Sample (50 ug of whole cell lysate)
A: Mouse Brain. 10% SDS PAGE. diluted at 1:10000



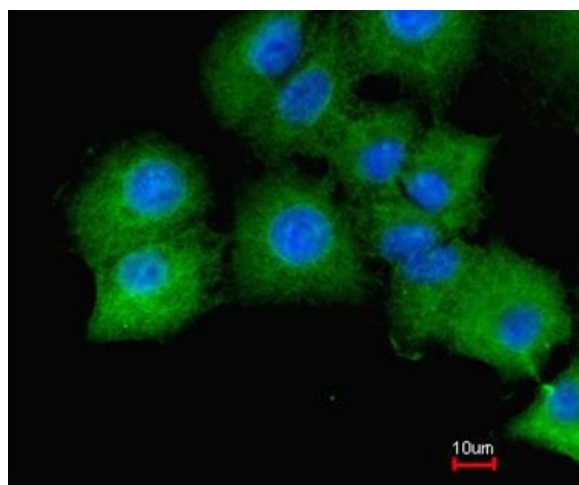
Human Placenta: Formalin-Fixed, Paraffin-Embedded (FFPE)



Human Thyroid: Formalin-Fixed, Paraffin-Embedded (FFPE)



Immunofluorescence analysis of paraformaldehyde-fixed A549, using GAPDH antibody at 1:200 dilution.



Immunofluorescence analysis of paraformaldehyde-fixed A549, merged with DNA probe, using GAPDH antibody at 1:200 dilution.