

## Product datasheet for **AP23082PU-N**

### **Bak (BAK1) (1-14) Rabbit Polyclonal Antibody**

#### **Product data:**

Product Type:	Primary Antibodies
Applications:	IHC, WB
Recommended Dilution:	<b>Immunohistochemistry on Paraffin Sections:</b> 10 µg/ml. <b>Western Blot:</b> 1/500 - 1/3000.
Reactivity:	Human
Host:	Rabbit
Clonality:	Polyclonal
Immunogen:	Synthetic peptide corresponding to a region within amino acids 1 and 14 of Human BAK1
Specificity:	This antibody detects Bcl-2-like 7.
Formulation:	PBS, pH 7, 1% BSA, 20% Glycerol, 0.01% Thimerosal State: Purified State: Liquid Ig fraction
Purification:	Immunoaffinity Chromatography
Conjugation:	Unconjugated
Storage:	Store (in aliquots) at -20 °C. Dilute only prior to immediate use. Avoid repeated freezing and thawing.
Stability:	Shelf life: one year from despatch.
Gene Name:	BCL2 antagonist/killer 1
Database Link:	<a href="#">Entrez Gene 578 Human Q16611</a>
Background:	Apoptosis plays a major role in normal organism development, tissue homeostasis, and removal of damaged cells. Disruption of this process has been implicated in a variety of diseases such as cancer. The Bcl-2 family of proteins is comprised of critical regulators of apoptosis that can be divided into two classes: those that inhibit apoptosis and those that promote cell death. Bak, a pro-apoptotic Bcl-2 family member, is an oligomeric protein that localizes to the mitochondria. It is thought to share significant functional homology with Bax, another pro-apoptotic Bcl-2 family member, as disruption of bak or bax has little effect on cell death, but mice lacking both genes display multiple developmental defects and cells lacking bak and bax show decreased apoptotic capability.

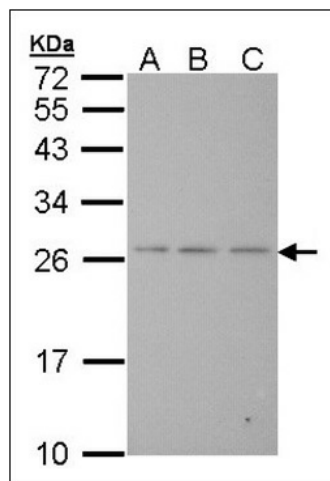


[View online »](#)

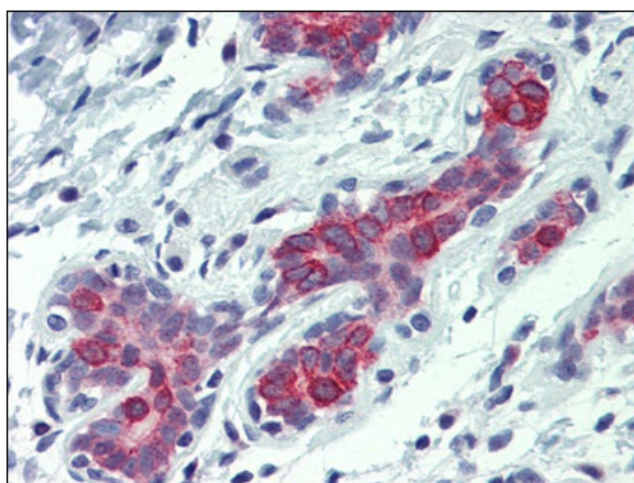
**Synonyms:** BAK1, BAK, BCL2L7, Bcl2-L-7, CDN1

**Protein Families:** Druggable Genome, Stem cell - Pluripotency, Transmembrane

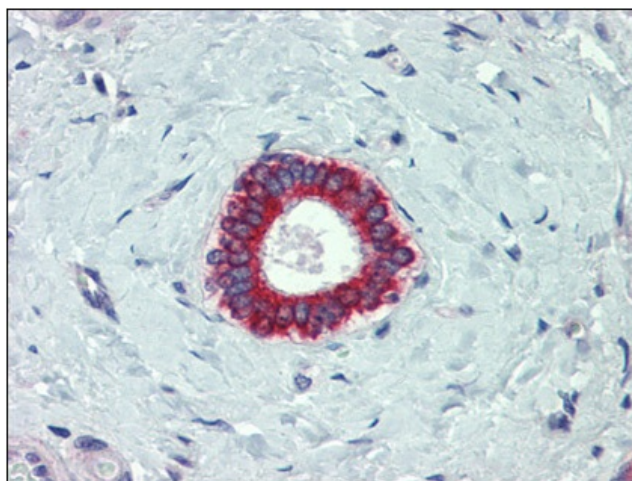
**Product images:**



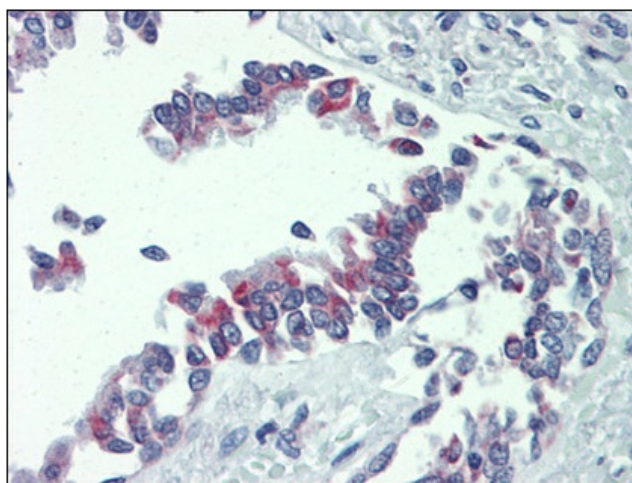
Western blot: Sample (30 ug of whole cell lysate).  
A: HeLa. B: Hep G2. C: Molt-4. 12% SDS PAGE.  
BAK1 antibody diluted at 1:1000.



Human Breast: Formalin-Fixed, Paraffin-Embedded (FFPE)



Human Liver, bile duct: Formalin-Fixed, Paraffin-Embedded (FFPE)



Human Lung, respiratory epithelium: Formalin-Fixed, Paraffin-Embedded (FFPE)