

## Product datasheet for **AP23081PU-N**

### ARL2 (123-184) Rabbit Polyclonal Antibody

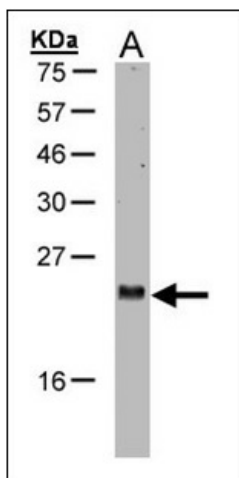
#### Product data:

|                       |   |
|-----------------------|---|
| Product Type:         | Primary Antibodies  |
| Applications:         | IHC, WB   |
| Recommended Dilution: | <b>Immunohistochemistry on Paraffin Sections:</b> 10 µg/ml.<br><b>Western Blot:</b> 1/500 - 1/3000.   |
| Reactivity:           | Human   |
| Host:                 | Rabbit  |
| Clonality:            | Polyclonal  |
| Immunogen:            | Synthetic peptide corresponding to a region within amino acids 123 and 184 of Human ARL2  |
| Specificity:          | This antibody detects ARL2.   |
| Formulation:          | PBS, pH 7, 1% BSA, 20% Glycerol, 0.01% Thimerosal<br>State: Purified<br>State: Liquid Ig fraction   |
| Concentration:        | lot specific  |
| Purification:         | Immunoaffinity Chromatography   |
| Conjugation:          | Unconjugated  |
| Storage:              | Store (in aliquots) at -20 °C. Dilute only prior to immediate use. Avoid repeated freezing and thawing.   |
| Stability:            | Shelf life: one year from despatch.   |
| Gene Name:            | ADP ribosylation factor like GTPase 2   |
| Database Link:        | <a href="#">Entrez Gene 402 Human P36404</a>  |
| Background:           | The ADP-ribosylation factor (ARF) genes are small GTP-binding proteins of the RAS superfamily. ARL2 is a member of a functionally distinct group of ARF-like genes. |
| Synonyms:             | ARFL2   |

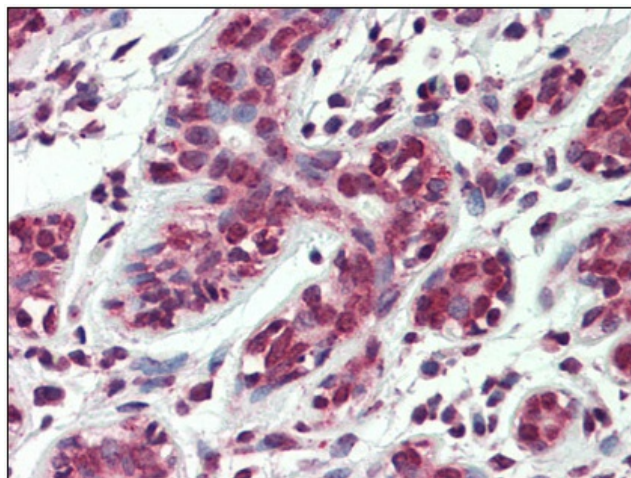


[View online »](#)

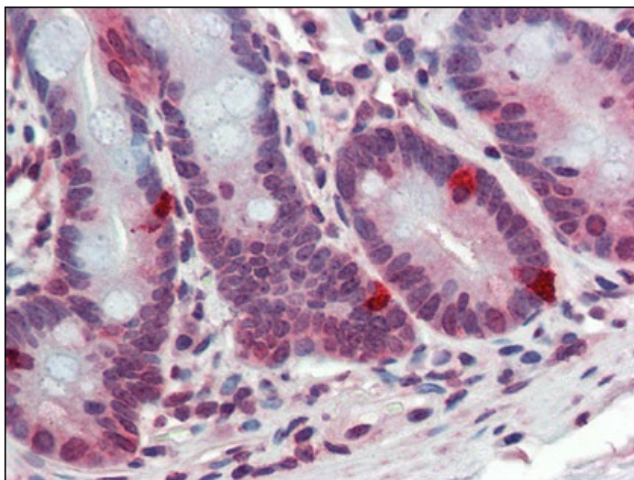
## Product images:



Western blot: Sample (30 ug of whole cell lysate).  
A:H1299. 15% SDS PAGE. ARL2 antibody diluted  
at 1:1000



Human Breast: Formalin-Fixed, Paraffin-  
Embedded (FFPE)



Human Small Intestine: Formalin-Fixed, Paraffin-Embedded (FFPE)