

## Product datasheet for **AP23078PU-N**

### ADAM8 (763-824) Rabbit Polyclonal Antibody

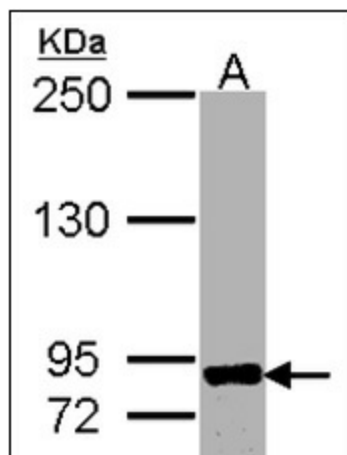
#### Product data:

Product Type:	Primary Antibodies
Applications:	IHC, WB
Recommended Dilution:	<b>Immunohistochemistry on Paraffin Sections:</b> 20 µg/ml. <b>Western Blot:</b> 1/500 - 1/3000.
Reactivity:	Human
Host:	Rabbit
Clonality:	Polyclonal
Immunogen:	Synthetic peptide contain a sequence corresponding to a region within amino acids 763 and 824 of Human CD156
Specificity:	This antibody detects CD156a / ADAM8.
Formulation:	PBS, pH 7, 1% BSA, 20% Glycerol, 0.01% Thimerosal State: Purified State: Liquid Ig fraction
Concentration:	lot specific
Purification:	Immunoaffinity Chromatography
Conjugation:	Unconjugated
Storage:	Store (in aliquots) at -20 °C. Dilute only prior to immediate use. Avoid repeated freezing and thawing.
Stability:	Shelf life: one year from despatch.
Gene Name:	ADAM metallopeptidase domain 8
Database Link:	<a href="#">Entrez Gene 101 Human P78325</a>
Background:	ADAM8 is a Metallopeptidase M12B type protease.
Synonyms:	MS2
Protein Families:	Druggable Genome, Transmembrane

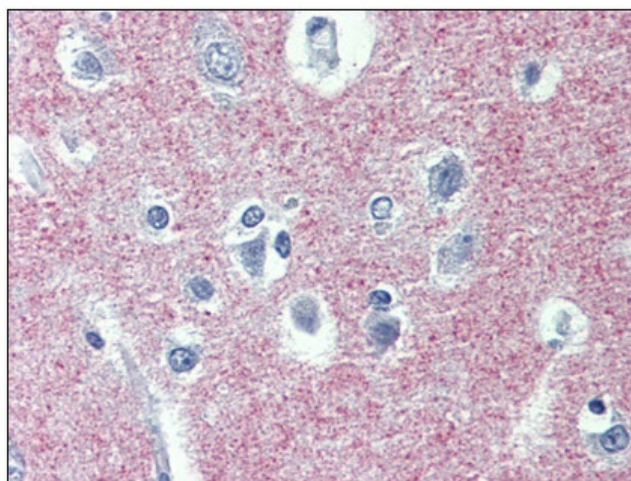


[View online »](#)

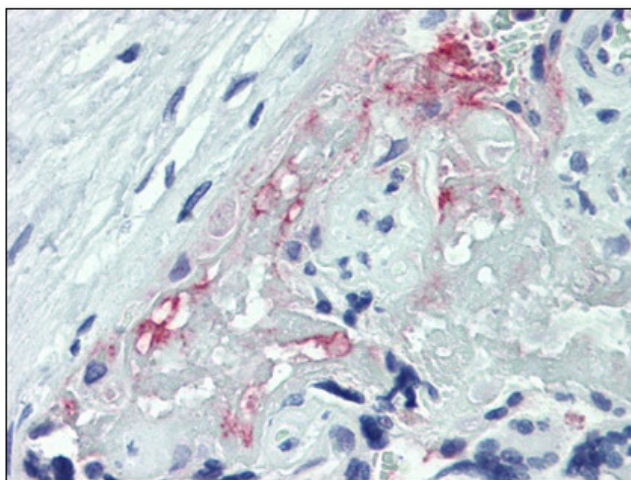
## Product images:



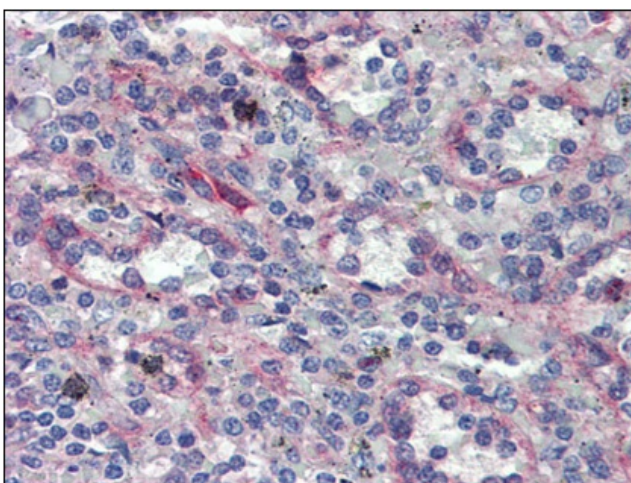
Western blot: Sample (30 ug of whole cell lysate).  
A:Raji. 7.5% SDS PAGE. ADAM8 antibody diluted  
at 1:500



Human Brain, cortex: Formalin-Fixed, Paraffin-  
Embedded (FFPE)



Human Placenta: Formalin-Fixed, Paraffin-Embedded (FFPE)



Human Spleen: Formalin-Fixed, Paraffin-Embedded (FFPE)