

## Product datasheet for **AP23074PU-N**

### CCR4 (Extracell. Dom.) Goat Polyclonal Antibody

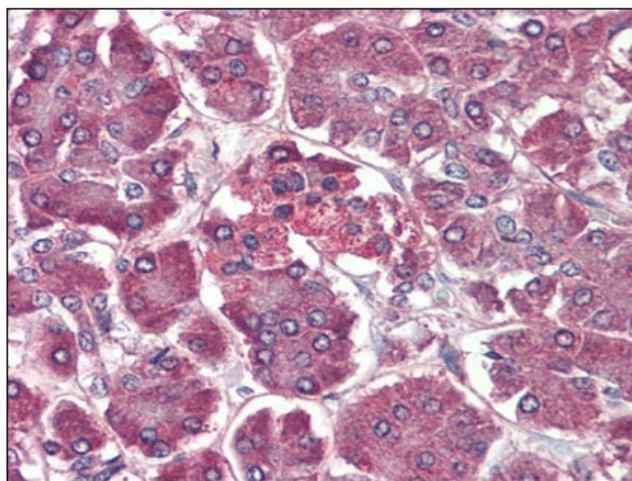
#### Product data:

Product Type:	Primary Antibodies
Applications:	ELISA, FC, IHC, WB
Recommended Dilution:	<b>ELISA:</b> 1/30000. <b>Flow Cytometry:</b> 1/12. <b>Immunohistochemistry on Paraffin Sections:</b> 5 µg/ml. <b>Western Blot:</b> 1/500.
Reactivity:	Human, Monkey
Host:	Goat
Clonality:	Polyclonal
Immunogen:	Synthetic corresponding to Human CCR4 extracellular domain. <b>Epitope:</b> Extracellular Domain.
Specificity:	This antibody detects CD194 / CCR4 (Extracell. Dom). Peptide sequence is < 50% identical to other chemokine receptors in this region.
Formulation:	10 mM KHPO <sub>4</sub> , 140 mM NaCl State: Aff - Purified State: Liquid purified Ig fraction Stabilizer: 1 mg/ml BSA Preservative: 0.09% Sodium Azide
Concentration:	lot specific
Purification:	Immunoaffinity Chromatography
Conjugation:	Unconjugated
Storage:	Store (in aliquots) at -20°C to -80°C. Avoid repeated freezing and thawing.
Stability:	Shelf life: one year from despatch.
Gene Name:	C-C motif chemokine receptor 4
Database Link:	<a href="#">Entrez Gene 705457 Monkey</a> <a href="#">Entrez Gene 1233 Human</a> <a href="#">P51679</a>

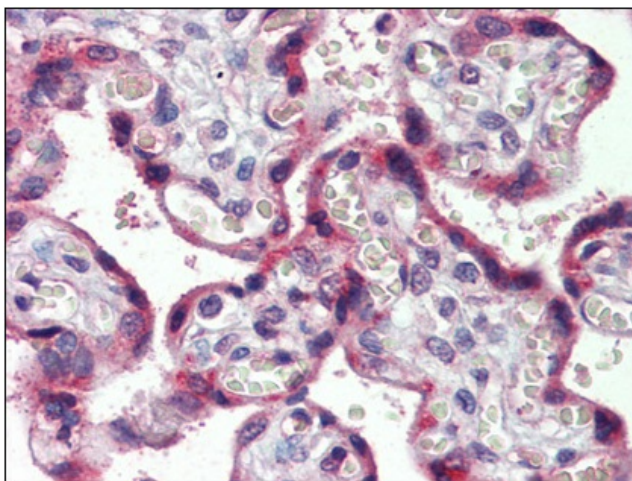


[View online »](#)

<b>Background:</b>	CCR4, a Chemokine Receptor, mediates inflammatory responses and HIV-1 infections. It binds beta-family chemokines (CC motif) such as TARC (thymus and activation-regulated chemokine) and MDC (macrophage-derived chemokine).
<b>Synonyms:</b>	C-C chemokine receptor type 4, C-C CKR-4, CC-CKR-4, CCR-4, CMKBR4, K5-5
<b>Protein Families:</b>	Druggable Genome, GPCR, Transmembrane
<b>Protein Pathways:</b>	Chemokine signaling pathway, Cytokine-cytokine receptor interaction

**Product images:**

Pancreas, Human: Formalin-Fixed, Paraffin-Embedded (FFPE)



Placenta, Human: Formalin-Fixed, Paraffin-Embedded (FFPE)