

Product datasheet for **AP23073PU-N**

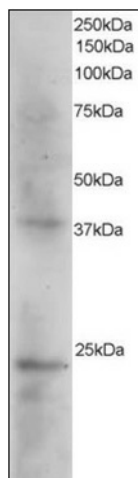
TSTD3 (N-term) Goat Polyclonal Antibody

Product data:

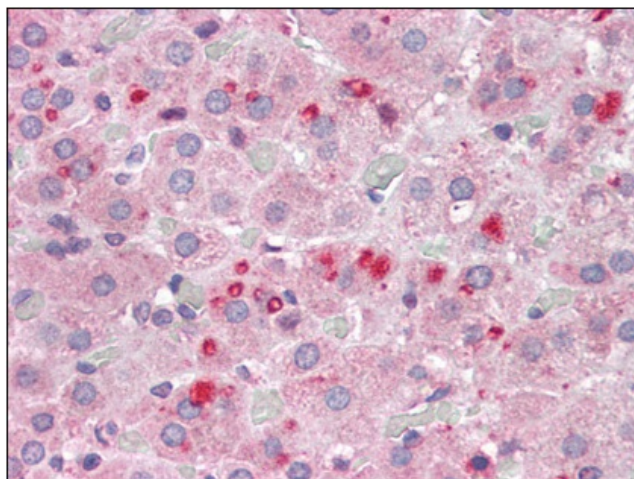
Product Type:	Primary Antibodies
Applications:	IHC, WB
Recommended Dilution:	Immunohistochemistry on Paraffin Sections: 3.75 µg/ml. Western Blot: 1 - 3 µg/ml.
Reactivity:	Human, Bovine, Chicken
Host:	Goat
Clonality:	Polyclonal
Immunogen:	Synthetic peptide from N-terminus of human SET
Specificity:	This antibody detects SET / I2PP2A (N-term).
Formulation:	Tris saline buffer, pH 7.3, 0.5% BSA, 0.02% sodium azide State: Purified State: Liquid Ig fraction
Purification:	Immunoaffinity Chromatography
Conjugation:	Unconjugated
Storage:	Store (in aliquots) at -20 °C. Dilute only prior to immediate use. Avoid repeated freezing and thawing.
Stability:	Shelf life: one year from despatch.
Gene Name:	thiosulfate sulfurtransferase (rhodanese)-like domain containing 3
Database Link:	Entrez Gene 6418 Human Entrez Gene 100130890 Human H0UI37
Synonyms:	I-2PP2A, TAF-I, PHAPII, IGAAD
Protein Families:	Druggable Genome, Phosphatase, Stem cell - Pluripotency



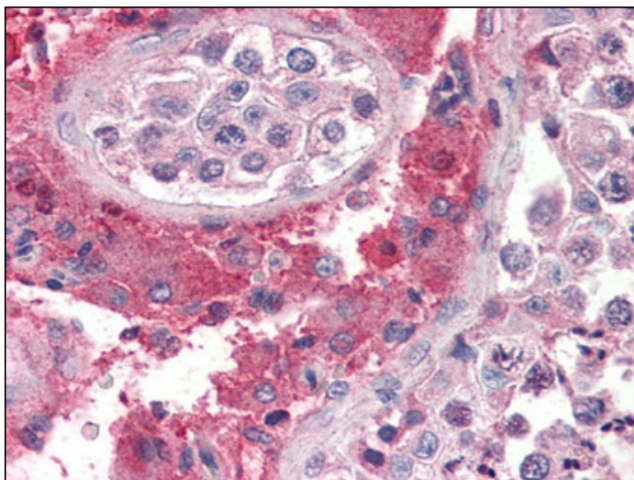
[View online »](#)

Product images:

Antibody staining (2 ug/ml) of Human Kidney extracts (RIPA buffer, 35 ug total protein per lane). Primary incubated for 1 hour. Detected by western blot using chemiluminescence.



Adrenal, Human: Formalin-Fixed, Paraffin-Embedded (FFPE)



Testis, Human: Formalin-Fixed, Paraffin-Embedded (FFPE)