

Product datasheet for **AP23071PU-N**

Cell adhesion molecule 4 (CADM4) (370-384) Goat Polyclonal Antibody

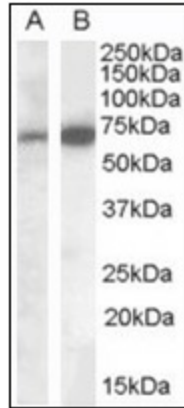
Product data:

Product Type:	Primary Antibodies
Applications:	ELISA, IHC, WB
Recommended Dilution:	ELISA: 1/32000. Immunohistochemistry on Paraffin Sections: 2.5 µg/ml. Western Blot: 0.03 - 0.1 µg/ml.
Reactivity:	Human, Bovine, Bat, Canine, Equine, Monkey, Porcine, Rabbit, Rat
Host:	Goat
Clonality:	Polyclonal
Immunogen:	Synthetic peptide from C-terminus of human IGSF4C
Specificity:	This antibody detects CADM4 (C-term).
Formulation:	Tris saline buffer, pH 7.3, 0.5% BSA, 0.02% sodium azide State: Aff - Purified State: Liquid Ig fraction
Concentration:	lot specific
Purification:	Immunoaffinity Chromatography
Conjugation:	Unconjugated
Storage:	Store at 2 - 8 °C for up to one month or (in aliquots) at -20 °C for longer. Avoid repeated freezing and thawing.
Stability:	Shelf life: one year from despatch.
Gene Name:	cell adhesion molecule 4
Database Link:	Entrez Gene 365216 Rat Entrez Gene 199731 Human Q8NFZ8
Background:	IGSF4C/TSLL2 is a membrane glycoprotein that along with TSLL1 and TSLC1 form a unique subfamily within the immunoglobulin superfamily. TSLL2 has been shown to be lost in prostate carcinomas and gliomas, suggesting that it may play a role in tumor suppression in addition to cell-cell interaction.
Synonyms:	Cell adhesion molecule 4, IGSF4C, NECL4, TSLL2
Protein Families:	Transmembrane

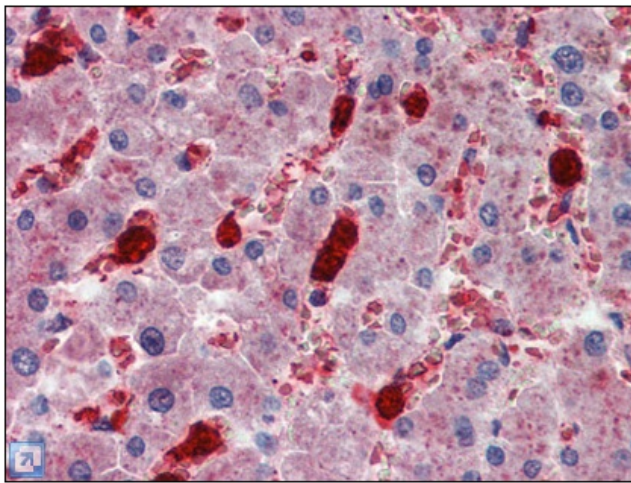


[View online »](#)

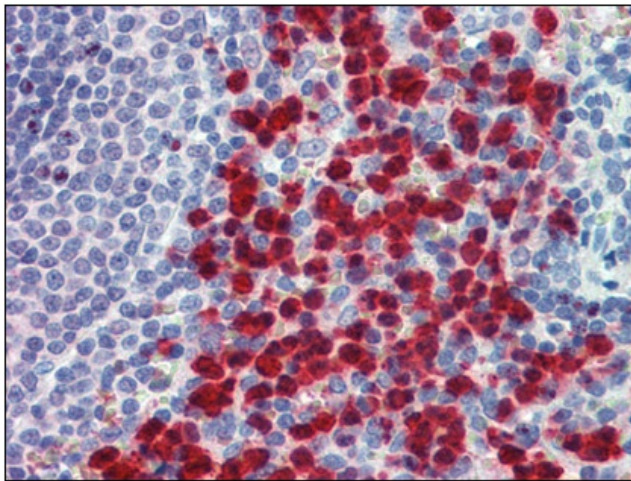
Product images:



Western blot: Staining of Human Brain (Cerebellum) lysate (35 ug protein in RIPA buffer). B) (0.05 ug/ml) Primary incubation was 1 hour. Detected by chemiluminescence.



Human Liver: Formalin-Fixed, Paraffin-Embedded (FFPE)



Human Spleen: Formalin-Fixed, Paraffin-Embedded (FFPE)