

## Product datasheet for **AP23070PU-N**

### HMGA1 (9-21) Goat Polyclonal Antibody

#### Product data:

Product Type:	Primary Antibodies
Applications:	ELISA, IHC, WB
Recommended Dilution:	<b>ELISA:</b> 1/16000. <b>Immunohistochemistry on Paraffin Sections:</b> 3.75 µg/ml. <b>Western Blot:</b> 0.5 - 1 µg/ml.
Reactivity:	Bovine, Canine, Human, Mouse, Porcine, Rat, Bat, Equine, Hamster, Monkey, Rabbit
Host:	Goat
Clonality:	Polyclonal
Immunogen:	HMGA1 antibody was raised against peptide from the internal region (near N Terminus) of human HMGA1.
Specificity:	This antibody reacts to High Mobility Group Protein Hmg-i (HMGA1) at aa 9-21. It is expected to recognize reported isoforms a (NP_665906.1, NP_665908.1, NP_665911.1) and b (NP_002122.1, NP_665910.1, NP_665912.1). The antibody is not expected to cross-react with HMGA2.
Formulation:	Tris saline buffer, pH 7.3 containing 0.5% BSA, 0.02% sodium azide State: Aff - Purified State: Liquid purified Ig fraction
Concentration:	lot specific
Purification:	Affinity Chromatography
Conjugation:	Unconjugated
Storage:	Store the antibody undiluted at 2-8°C for one month or (in aliquots) at -20°C for longer. Avoid repeated freezing and thawing.
Stability:	Shelf life: one year from despatch.
Gene Name:	high mobility group AT-hook 1
Database Link:	<a href="#">Entrez Gene 15361 Mouse</a> <a href="#">Entrez Gene 117062 Rat</a> <a href="#">Entrez Gene 3159 Human P17096</a>



[View online »](#)

**Background:**

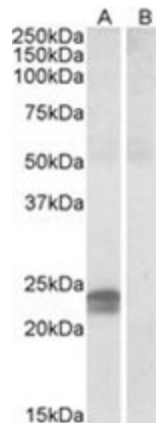
HMGIY / HMGA1 is a non-histone protein involved in many cellular processes, including regulation of inducible gene transcription, integration of retroviruses into chromosomes, and the metastatic progression of cancer cells. The encoded protein preferentially binds to the minor groove of A+T-rich regions in double-stranded DNA. It has little secondary structure in solution but assumes distinct conformations when bound to substrates such as DNA or other proteins.

**Synonyms:**

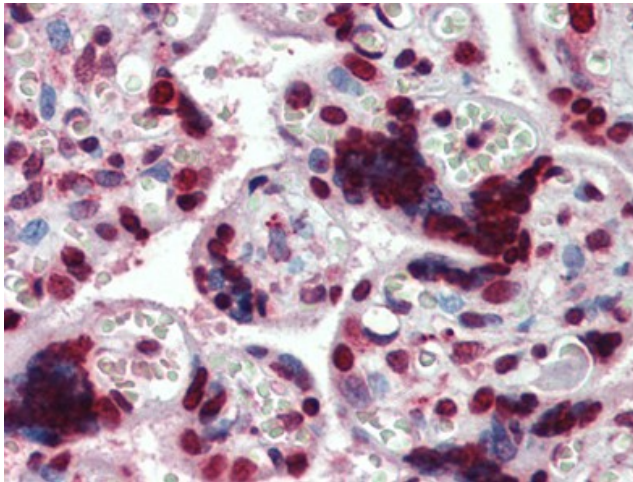
High mobility group protein HMG-I/HMG-Y, High mobility group protein A1, High mobility group protein R

**Protein Families:**

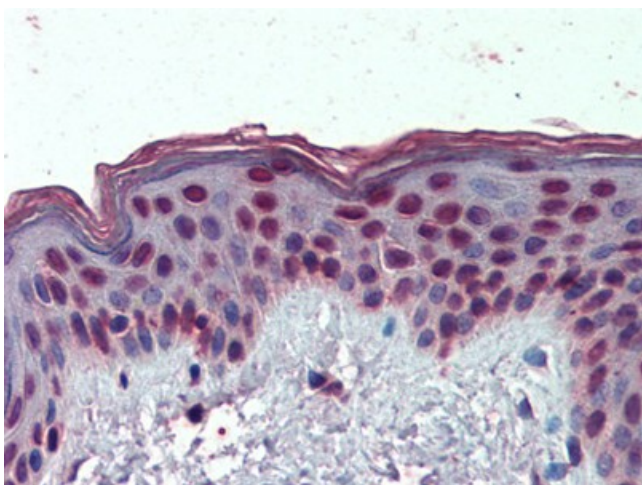
Druggable Genome, Stem cell - Pluripotency, Stem cell relevant signaling - JAK/STAT signaling pathway, Transcription Factors

**Product images:**

WB Image of AP23070PU-N Staining (0.5ug/ml) of Human Pancreas lysate (35ug protein in RIPA buffer) with (B) and without (A) blocking with the immunizing peptide. Primary incubation was 1 hour. Detected by chemiluminescence.



IHC Image of AP23070PU-N Human Placenta: Formalin-Fixed, Paraffin-Embedded (FFPE)



IHC Image of AP23070PU-N Human Skin:  
Formalin-Fixed, Paraffin-Embedded (FFPE)