

Product datasheet for **AP23069PU-N**

Carbonic Anhydrase I (CA1) (166-176) Goat Polyclonal Antibody

Product data:

Product Type:	Primary Antibodies
Applications:	ELISA, IHC, WB
Recommended Dilution:	ELISA: 1/64000. Immunohistochemistry on Paraffin Sections: 2.5 µg/ml. Western Blot: 0.03 - 0.1 µg/ml.
Reactivity:	Human
Host:	Goat
Clonality:	Polyclonal
Immunogen:	Synthetic peptide from an internal region of human CA1 / Carbonic Anhydrase I (NP_001729.1)
Specificity:	This antibody detects Carbonic anhydrase 1 (Internal).
Formulation:	Tris saline buffer, pH 7.3 containing 0.5% BSA as stabilizer and 0.02% sodium azide as preservative State: Aff - Purified State: Liquid purified Ig fraction
Concentration:	lot specific
Purification:	Affinity Chromatography
Conjugation:	Unconjugated
Storage:	Store the antibody undiluted at 2-8°C for one month or (in aliquots) at -20°C for longer. Avoid repeated freezing and thawing.
Stability:	Shelf life: one year from despatch.
Gene Name:	carbonic anhydrase 1
Database Link:	Entrez Gene 759 Human P00915



[View online »](#)

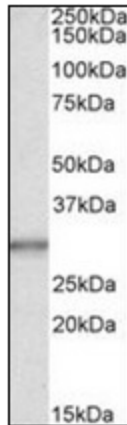
Background: Carbonic anhydrases (CAs) are a large family of zinc metalloenzymes that catalyze the reversible hydration of carbon dioxide. They participate in a variety of biological processes, including respiration, calcification, acid-base balance, bone resorption, and the formation of aqueous humor, cerebrospinal fluid, saliva and gastric acid. They show extensive diversity in tissue distribution and in their subcellular localization.

Synonyms: Carbonic anhydrase I, Carbonate dehydratase I, Carbonic anhydrase B, CA1, CAB, CA-I

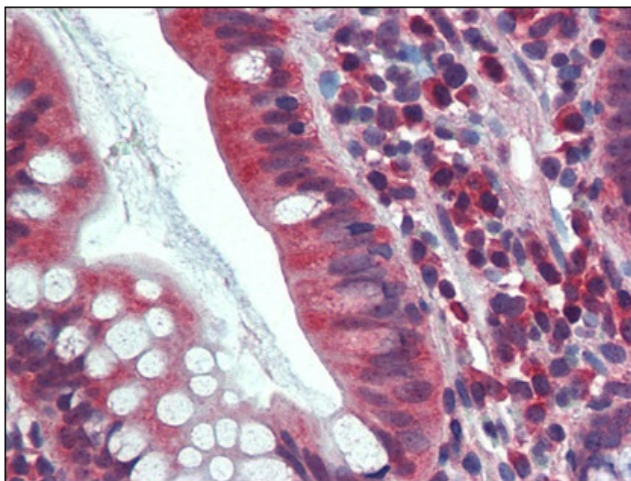
Protein Families: Druggable Genome

Protein Pathways: Nitrogen metabolism

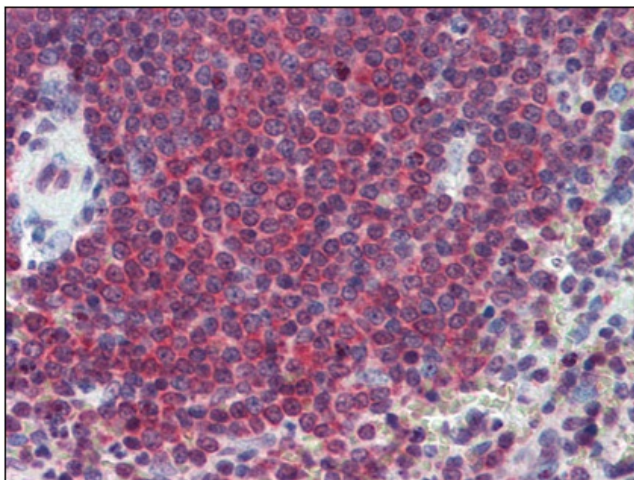
Product images:



Western blot: Staining (0.03 ug/ml) of Human Liver lysate (35 ug protein in RIPA buffer). Primary incubation was 1 hour. Detected by chemiluminescence.



Human Small Intestine: Formalin-Fixed, Paraffin-Embedded (FFPE)



Human Spleen: Formalin-Fixed, Paraffin-Embedded (FFPE)