

Product datasheet for **AP23068PU-N**

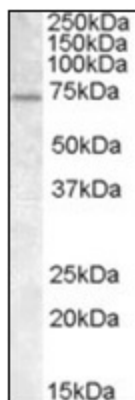
FMRP (FMR1) (116-130) Goat Polyclonal Antibody

Product data:

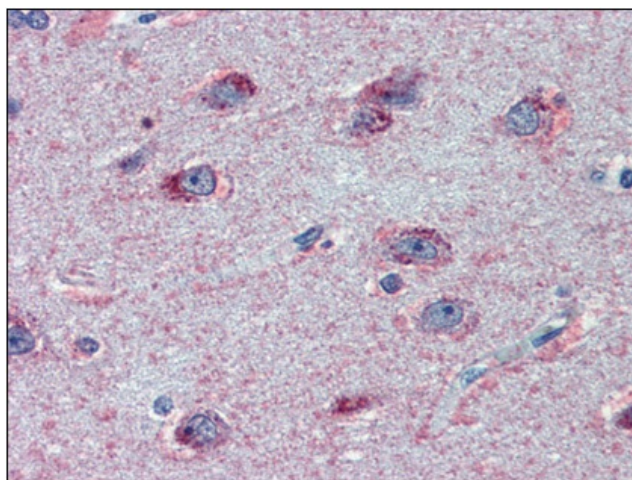
Product Type:	Primary Antibodies
Applications:	ELISA, IHC, WB
Recommended Dilution:	ELISA: 1/32000. Immunohistochemistry on Paraffin Sections: 2.5 µg/ml. Western Blot: 0.3 - 1 µg/ml.
Reactivity:	Human, Bat, Canine, Hamster, Monkey, Mouse, Porcine, Rabbit, Rat
Host:	Goat
Clonality:	Polyclonal
Immunogen:	Synthetic peptide from an internal region of human FMR1 (NP_002015.1)
Specificity:	This antibody detects internal FMR1 / FMRP.
Formulation:	Tris saline buffer, pH 7.3, 0.5% BSA, 0.02% sodium azide State: Aff - Purified State: Liquid purified Ig fraction
Concentration:	lot specific
Purification:	Immunoaffinity chromatography
Conjugation:	Unconjugated
Storage:	Store undiluted at 2-8°C for one month or (in aliquots) at -20°C for longer. Avoid repeated freezing and thawing.
Stability:	Shelf life: one year from despatch.
Gene Name:	fragile X mental retardation 1
Database Link:	Entrez Gene 14265 Mouse Entrez Gene 24948 Rat Entrez Gene 700138 Monkey Entrez Gene 2332 Human Q06787
Synonyms:	Fragile X mental retardation 1 protein, Protein FMR-1
Protein Families:	Druggable Genome



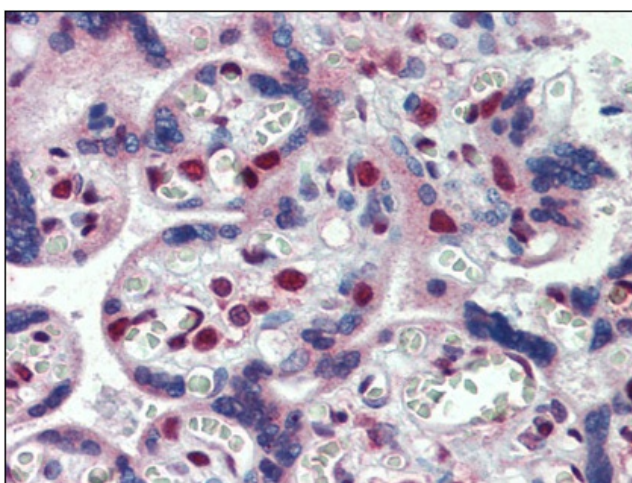
[View online »](#)

Product images:

Western blot: Antibody (0.3 ug/ml) staining of HeLa lysate (35 ug protein in RIPA buffer). Primary incubation was 1 hour. Detected by chemiluminescence.



Human Brain, cortex: Formalin-Fixed, Paraffin-Embedded (FFPE)



Human Placenta: Formalin-Fixed, Paraffin-Embedded (FFPE)