

Product datasheet for **AP23067PU-N**

Thrombin Receptor (F2R) (24-37) Goat Polyclonal Antibody

Product data:

| | |
|-----------------------|---|
| Product Type: | Primary Antibodies |
| Applications: | ELISA, IHC, WB |
| Recommended Dilution: | ELISA: 1/3200. Immunohistochemistry on Paraffin Sections: 2.5 µg/ml. Western Blot: 0.5 - 2 µg/ml. |
| Reactivity: | Human |
| Host: | Goat |
| Clonality: | Polyclonal |
| Immunogen: | Synthetic peptide from the Internal region (near N-terminus) of the human protein sequence according to NP_001983.2 |
| Specificity: | This antibody detects Thrombin receptor / F2R at internal region (near N-terminus). |
| Formulation: | Tris saline buffer, pH 7.3 containing 0.5% BSA as stabilizer and 0.02% sodium azide as preservative State: Aff - Purified State: Liquid purified Ig fraction |
| Concentration: | lot specific |
| Purification: | Immunoaffinity Chromatography |
| Conjugation: | Unconjugated |
| Storage: | Store the antibody undiluted at 2-8°C for one month or (in aliquots) at -20°C for longer. Avoid repeated freezing and thawing. |
| Stability: | Shelf life: one year from despatch. |
| Gene Name: | coagulation factor II thrombin receptor |
| Database Link: | Entrez Gene 2149 Human P25116 |
| Background: | Thrombin Receptor is a Proteinase-Activated Receptor involved in the regulation of thrombotic response. Proteolytic cleavage leads to the activation of the receptor. Thrombin induced RANTES expression through a PAR-1 mediated pathway influences inflammatory cell migration to the synovium in patients with rheumatoid arthritis. |



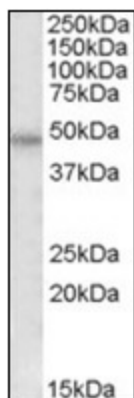
[View online »](#)

Synonyms: Proteinase-activated receptor 1, PAR-1, PAR1, CF2R

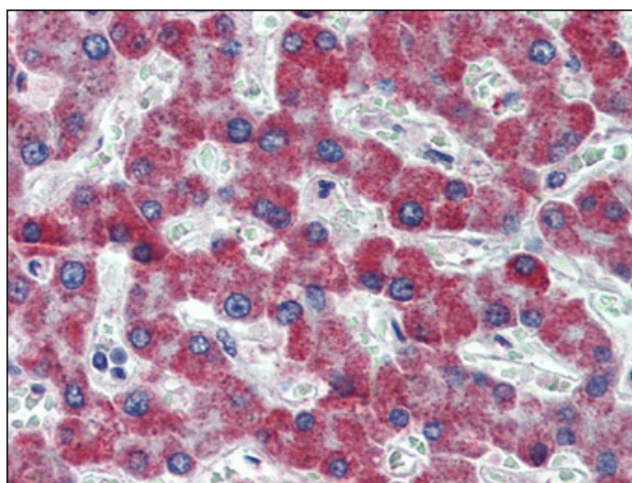
Protein Families: Druggable Genome, GPCR, Transmembrane

Protein Pathways: Calcium signaling pathway, Complement and coagulation cascades, Endocytosis, Neuroactive ligand-receptor interaction, Regulation of actin cytoskeleton

Product images:



Western blot: Staining (0.5 ug/ml) of HeLa lysate (35 ug protein in RIPA buffer). Primary incubation was 1 hour. Detected by chemiluminescence.



Human Liver: Formalin-Fixed, Paraffin-Embedded (FFPE)