

Product datasheet for **AP23063PU-N**

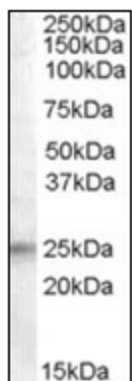
IGFBP6 (128-141) Goat Polyclonal Antibody

Product data:

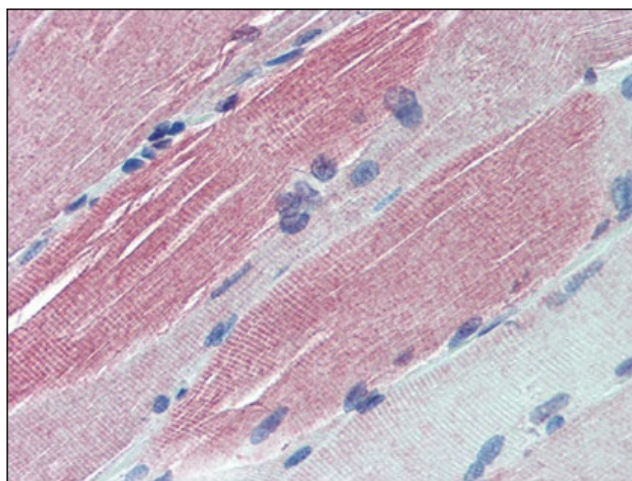
Product Type:	Primary Antibodies
Applications:	ELISA, IHC, WB
Recommended Dilution:	ELISA: 1/32000. Immunohistochemistry on Paraffin Sections: 5 µg/ml. Western Blot: 0.5 - 1.5 µg/ml.
Reactivity:	Bovine, Canine, Equine, Human, Monkey, Sheep, Bear
Host:	Goat
Clonality:	Polyclonal
Immunogen:	Synthetic peptide from an internal region of human IGFBP6
Specificity:	This antibody detects internal IGFBP6.
Formulation:	Tris saline buffer, pH 7.3, 0.5% BSA, 0.02% sodium azide State: Aff - Purified State: Liquid Ig fraction
Concentration:	lot specific
Purification:	Immunoaffinity Chromatography
Conjugation:	Unconjugated
Storage:	Upon receipt, store the antibody (in aliquots) at -20 °C. Avoid repeated freezing and thawing.
Stability:	Shelf life: one year from despatch.
Gene Name:	insulin like growth factor binding protein 6
Database Link:	Entrez Gene 3489 Human P24592
Background:	IGF-binding proteins prolong the half-life of the IGFs and have been shown to either inhibit or stimulate the growth promoting effects of the IGFs on cell culture. They alter the interaction of IGFs with their cell surface receptors.
Synonyms:	IGF-binding protein 6, IGFBP-6, IBP-6, IBP6
Protein Families:	Secreted Protein



[View online »](#)

Product images:

Western Blot: Antibody (0.5 ug/ml) staining of Human Adrenal Gland lysate (35 ug protein in RIPA buffer). Primary incubation was 1 hour. Detected by chemiluminescence.



Immunohistochemistry: Human Skeletal Muscle: Formalin-Fixed, Paraffin-Embedded (FFPE).