

Product datasheet for **AP23060PU-N**

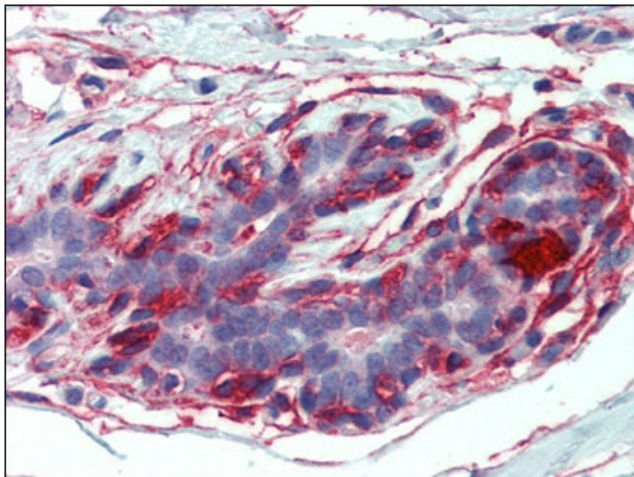
EPB41L2 (EPB41L2) (347-357) Goat Polyclonal Antibody

Product data:

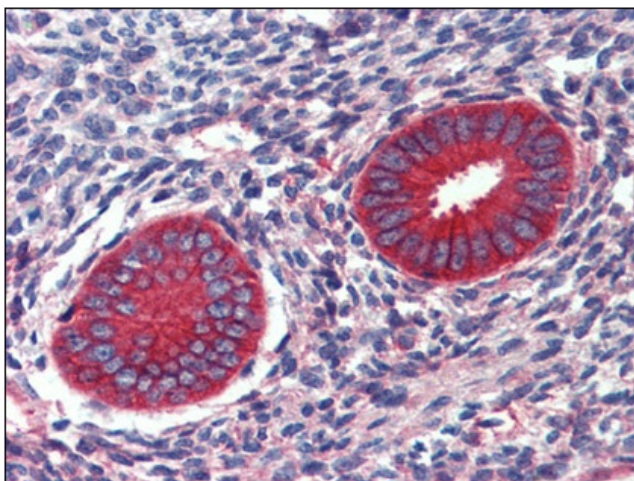
Product Type:	Primary Antibodies
Applications:	ELISA, IHC
Recommended Dilution:	ELISA: 1/16000. Immunohistochemistry on Paraffin Sections: 2.5 µg/ml.
Reactivity:	Human
Host:	Goat
Clonality:	Polyclonal
Immunogen:	Synthetic peptide from an internal region of human EPB41L2
Specificity:	This antibody detects EPB41L2 (347-357).
Formulation:	Tris saline buffer, pH 7.3, 0.5% BSA, 0.02% sodium azide State: Aff - Purified State: Liquid Ig fraction
Concentration:	lot specific
Purification:	Immunoaffinity Chromatography
Conjugation:	Unconjugated
Storage:	Store at 2 - 8 °C for up to one month or (in aliquots) at -20 °C for longer. Avoid repeated freezing and thawing.
Stability:	Shelf life: one year from despatch.
Gene Name:	erythrocyte membrane protein band 4.1 like 2
Database Link:	Entrez Gene 2037 Human O43491
Synonyms:	4.1-G; 4.1G; DKFZp781D1972; DKFZp781H1755; OTTHUMP00000017197
Protein Pathways:	Tight junction



[View online »](#)

Product images:

Immunohistochemistry: Human Breast: Formalin-Fixed, Paraffin-Embedded (FFPE)



Immunohistochemistry: Human Uterus: Formalin-Fixed, Paraffin-Embedded (FFPE)