

## Product datasheet for **AP23056PU-N**

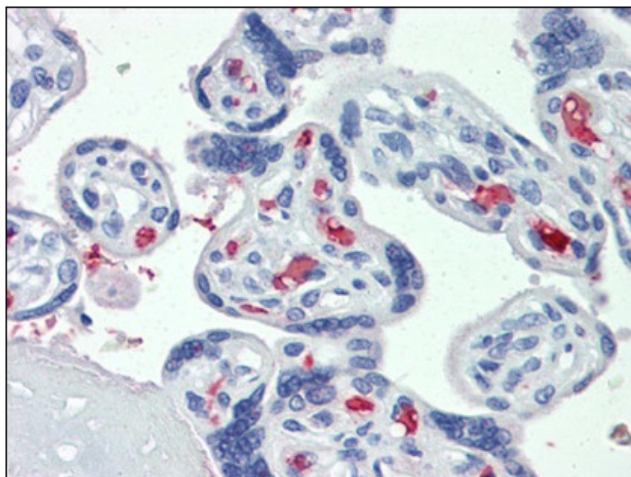
### CLEC2D (122-131) Goat Polyclonal Antibody

#### Product data:

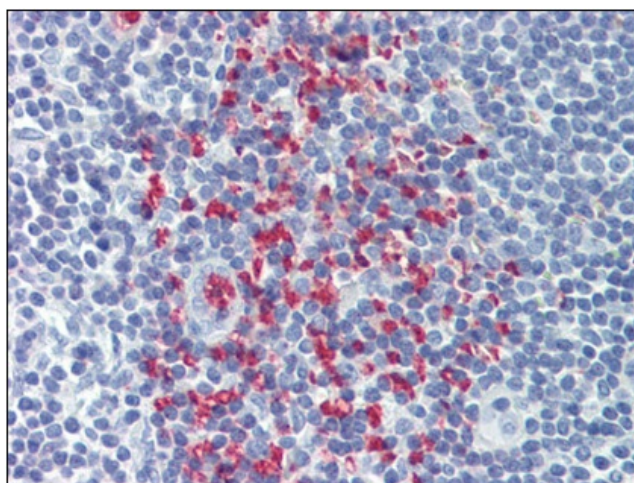
Product Type:	Primary Antibodies
Applications:	ELISA, IHC
Recommended Dilution:	<b>ELISA:</b> 1/16000. <b>Immunohistochemistry on Paraffin Sections:</b> 3.75 µg/ml.
Reactivity:	Human, Equine, Monkey
Host:	Goat
Clonality:	Polyclonal
Immunogen:	Synthetic peptide from internal region of human CLEC2D
Specificity:	This antibody detects internal CLEC2D.
Formulation:	Tris saline buffer, pH 7.3 containing 0.5% BSA as stabilizer and 0.02% sodium azide as preservative State: Aff - Purified State: Liquid purified Ig fraction
Concentration:	lot specific
Purification:	Immunoaffinity Chromatography
Conjugation:	Unconjugated
Storage:	Store the antibody undiluted at 2-8°C for one month or (in aliquots) at -20°C for longer. Avoid repeated freezing and thawing.
Stability:	Shelf life: one year from despatch.
Gene Name:	C-type lectin domain family 2 member D
Database Link:	<a href="#">Entrez Gene 29121 Human Q9UHP7</a>
Background:	Receptor for KLRB1 that protects target cells against natural killer cell-mediated lysis. Inhibits osteoclast formation. Inhibits bone resorption. Modulates the release of interferon-gamma. Binds high molecular weight sulfated glycosaminoglycans.
Synonyms:	Osteoclast inhibitory lectin, CLAX, LLT1, LLT-1, OCIL
Protein Families:	Druggable Genome, Transmembrane



[View online »](#)

**Product images:**

Immunohistochemistry: Placenta, Human: Formalin-Fixed, Paraffin-Embedded (FFPE)



Immunohistochemistry: Tonsil, Human: Formalin-Fixed, Paraffin-Embedded (FFPE)