

Product datasheet for **AP23052PU-N**

IDE (914-924) Goat Polyclonal Antibody

Product data:

Product Type:	Primary Antibodies
Applications:	ELISA, IHC, WB
Recommended Dilution:	ELISA: 1/32000. Immunohistochemistry on Paraffin Sections: 2.5 µg/ml. Western Blot: 0.1 - 0.3 µg/ml.
Reactivity:	Human, Bat, Canine, Equine
Host:	Goat
Clonality:	Polyclonal
Immunogen:	Synthetic peptide from an internal region of human IDE
Specificity:	This antibody detects Insulin-degrading enzyme (Internal). It is expected to recognize both reported isoforms (NP_004960.1 and NP_001159418.1).
Formulation:	Tris saline buffer, pH 7.3 containing 0.5% BSA as stabilizer and 0.02% sodium azide as preservative State: Aff - Purified State: Liquid purified Ig fraction
Concentration:	lot specific
Purification:	Immunoaffinity chromatography
Conjugation:	Unconjugated
Storage:	Store the antibody undiluted at 2-8°C for one month or (in aliquots) at -20°C for longer. Avoid repeated freezing and thawing.
Stability:	Shelf life: one year from despatch.
Gene Name:	insulin degrading enzyme
Database Link:	Entrez Gene 3416 Human P14735



[View online »](#)

Background:

Insulin Degrading Enzyme (IDE) encodes a zinc metallopeptidase that degrades intracellular insulin, and thereby terminates insulin's activity, as well as participating in intercellular peptide signalling by degrading diverse peptides such as glucagon, amylin, bradykinin, and kallidin. The preferential affinity of IDE for insulin results in insulin-mediated inhibition of the degradation of other peptides such as beta-amyloid. Deficiencies in IDE's function are associated with Alzheimer's disease and type 2 diabetes mellitus but mutations in this gene have not been shown to be causative for these diseases. This protein localizes primarily to the cytoplasm but in some cell types localizes to the extracellular space, cell membrane, peroxisome, and mitochondrion.

Synonyms:

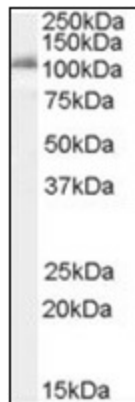
IDE, EC=3.4.24.56, Insulin protease, Insulinase, Insulysin, Abeta-degrading protease

Protein Families:

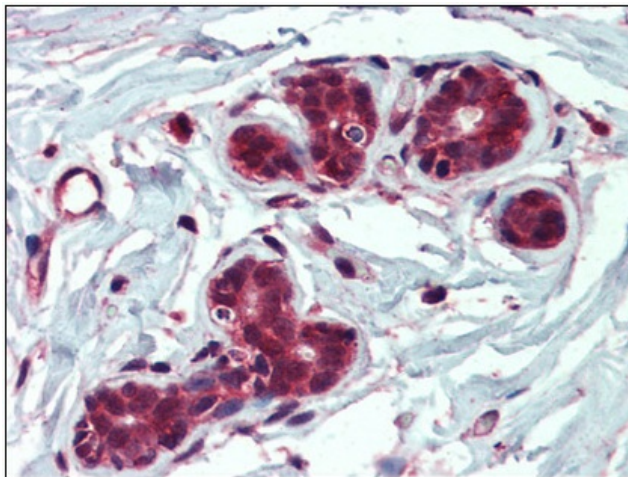
Druggable Genome, Protease

Protein Pathways:

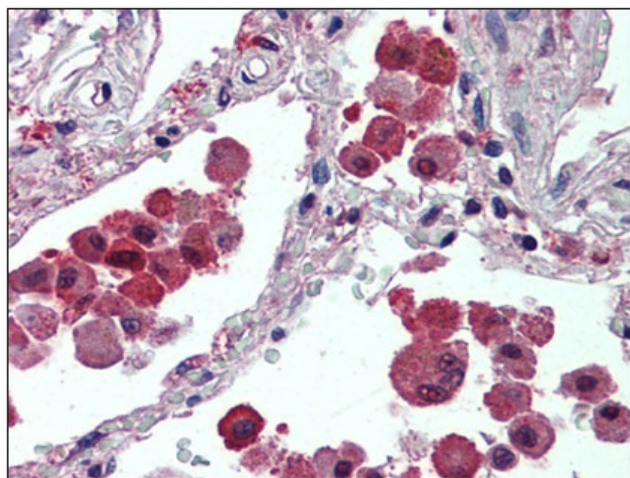
Alzheimer's disease

Product images:

Western Blot Image: Antibody (0.1 ug/ml) staining of K562 cell lysate (35 ug protein in RIPA buffer). Primary incubation was 1 hour. Detected by chemiluminescence.



Immunohistochemistry Image: Human Breast: Formalin-Fixed, Paraffin-Embedded (FFPE)



Immunohistochemistry Image: Human Lung:
Formalin-Fixed, Paraffin-Embedded (FFPE)