

## Product datasheet for **AP23051PU-N**

### FMRP (FMR1) (594-607) Goat Polyclonal Antibody

#### Product data:

Product Type:	Primary Antibodies
Applications:	ELISA, IHC, WB
Recommended Dilution:	<b>ELISA:</b> 1/128000. <b>Immunohistochemistry on Paraffin Sections:</b> 2.5 µg/ml. <b>Western Blot:</b> 0.1 - 0.3 µg/ml.
Reactivity:	Human, Bat, Hamster, Monkey, Mouse, Porcine, Rabbit, Rat
Host:	Goat
Clonality:	Polyclonal
Immunogen:	Synthetic peptide from the internal region (near the C Terminus) of the protein sequence according to NP_002015.1
Specificity:	This antibody detects FMR1 / FMRP (C-term).
Formulation:	Tris saline, pH 7.3 containing 0.02% sodium azide as preservative and 0.5% BSA as stabilizer State: Aff - Purified State: Liquid purified Ig fraction
Concentration:	lot specific
Purification:	Immunoaffinity Chromatography
Conjugation:	Unconjugated
Storage:	Store the antibody undiluted at 2-8°C for one month or (in aliquots) at -20°C for longer. Avoid repeated freezing and thawing.
Stability:	Shelf life: one year from despatch.
Gene Name:	Homo sapiens fragile X mental retardation 1 (FMR1), transcript variant ISO1
Database Link:	<a href="#">Entrez Gene 14265 Mouse</a> <a href="#">Entrez Gene 24948 Rat</a> <a href="#">Entrez Gene 700138 Monkey</a> <a href="#">Entrez Gene 2332 Human</a> <a href="#">Q06787</a>



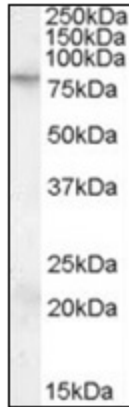
[View online »](#)

**Background:** Translation repressor. Component of the CYFIP1-EIF4E-FMR1 complex which binds to the mRNA cap and mediates translational repression. In the CYFIP1-EIF4E-FMR1 complex this subunit mediates translation repression (By similarity). RNA-binding protein that plays a role in intracellular RNA transport and in the regulation of translation of target mRNAs. Associated with polysomes. May play a role in the transport of mRNA from the nucleus to the cytoplasm.

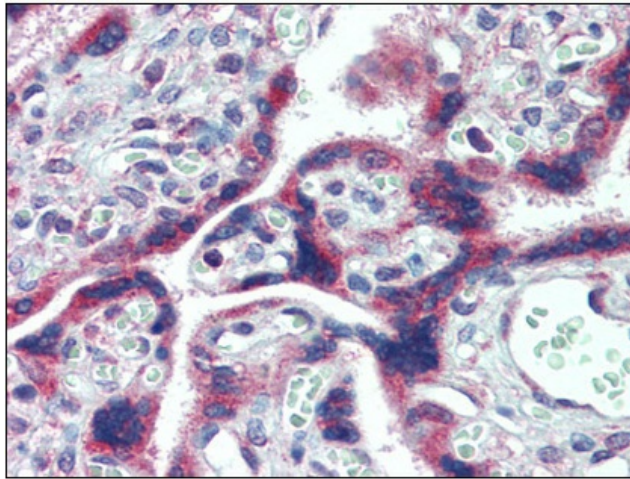
**Synonyms:** Fragile X mental retardation 1 protein, Protein FMR-1

**Protein Families:** Druggable Genome

**Product images:**



Western Blot Image: Antibody (0.1 ug/ml) staining of KELLY cell lysate (35 ug protein in RIPA buffer). Primary incubation was 1 hour. Detected by chemiluminescence.



Immunohistochemistry Image: Human Placenta: Formalin-Fixed, Paraffin-Embedded (FFPE)