

Product datasheet for **AP23048PU-N**

TIA1 (189-199) Goat Polyclonal Antibody

Product data:

Product Type:	Primary Antibodies
Applications:	ELISA, IHC, WB
Recommended Dilution:	ELISA: 1/128000. Immunohistochemistry on Paraffin Sections: 3.75 µg/ml. Western Blot: 0.1 - 0.3 µg/ml.
Reactivity:	Human, Bovine, Bat, Canine, Chicken, Monkey, Mouse, Rabbit, Rat, Xenopus
Host:	Goat
Clonality:	Polyclonal
Immunogen:	Synthetic peptide from an internal region of human TIA1
Specificity:	This antibody detects TIA1 (Internal).
Formulation:	Tris saline buffer, pH 7.3 containing 0.5% BSA as stabilizer and 0.02% sodium azide as preservative State: Aff - Purified State: Liquid purified Ig fraction
Concentration:	lot specific
Purification:	Immunoaffinity chromatography
Conjugation:	Unconjugated
Storage:	Store the antibody undiluted at 2-8°C for one month or (in aliquots) at -20°C for longer. Avoid repeated freezing and thawing.
Stability:	Shelf life: one year from despatch.
Gene Name:	TIA1 cytotoxic granule-associated RNA binding protein
Database Link:	<u>Entrez Gene 21841 Mouse</u> <u>Entrez Gene 312510 Rat</u> <u>Entrez Gene 7072 Human P31483</u>



[View online »](#)

Background:

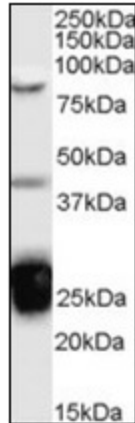
TIA-1 is a member of a RNA-binding protein family and possesses nucleolytic activity against cytotoxic lymphocyte (CTL) target cells. It has been suggested that this protein may be involved in the induction of apoptosis as it preferentially recognizes poly(A) homopolymers and induces DNA fragmentation in CTL targets. The major granule-associated species is a 15-kDa protein that is thought to be derived from the carboxyl terminus of the 40-kDa product by proteolytic processing.

Synonyms:

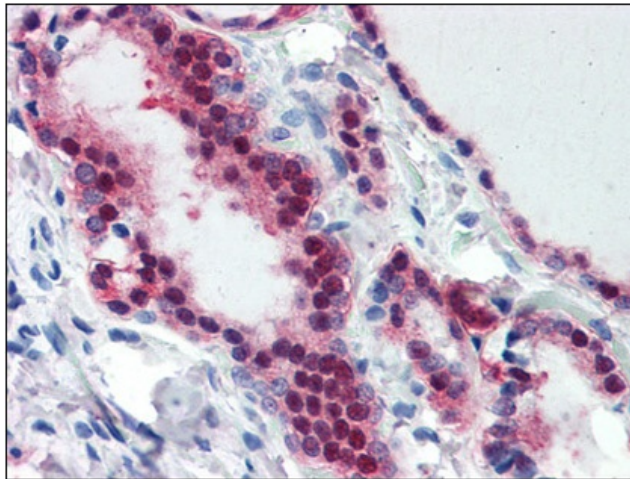
Nucleolysin TIA-1, p40-TIA-1, p15-TIA-1

Protein Families:

Druggable Genome

Product images:

Western Blot Image: Antibody (0.1 ug/ml) staining of Jurkat cell lysate (35 ug protein in RIPA buffer). Primary incubation was 1 hour. Detected by chemiluminescence.



Immunohistochemistry Image: Human Thyroid: Formalin-Fixed, Paraffin-Embedded (FFPE).