

Product datasheet for **AP23046PU-N**

ASS1 (196-212) Goat Polyclonal Antibody

Product data:

Product Type:	Primary Antibodies
Applications:	ELISA, IHC, IP, WB
Recommended Dilution:	ELISA: 1/64000. Immunohistochemistry on Paraffin Sections: 2.5 µg/ml. Immunoprecipitation. Western Blot: 0.01 - 0.03 µg/ml.
Reactivity:	Human, Bovine, Bat, Canine, Equine, Monkey, Mouse, Porcine, Rat
Host:	Goat
Clonality:	Polyclonal
Immunogen:	Synthetic peptide from an internal region of human ASS1
Specificity:	This antibody detects ASS1 (Internal).
Formulation:	Tris saline buffer, pH 7.3, 0.5% BSA, 0.02% sodium azide State: Aff - Purified State: Liquid Ig fraction
Concentration:	lot specific
Purification:	Immunoaffinity chromatography
Conjugation:	Unconjugated
Storage:	Store at 2 - 8 °C for up to one month or (in aliquots) at -20 °C for longer. Avoid repeated freezing and thawing.
Stability:	Shelf life: one year from despatch.
Gene Name:	argininosuccinate synthase 1
Database Link:	Entrez Gene 11898 Mouse Entrez Gene 25698 Rat Entrez Gene 445 Human P00966



[View online »](#)

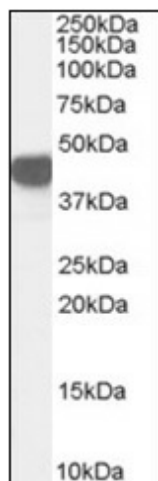
Background: Argininosuccinate synthetase catalyzes the penultimate step of the arginine biosynthetic pathway. There are approximately 10 to 14 ASS pseudogenes scattered across the human genome; the ASS gene located on chromosome 9 appears to be the only functional gene for argininosuccinate synthetase. The ASS primary transcript is subject to alternative splicing in the 5' non-coding region; a splice variant lacking exon 2 occurs in liver and fibroblast cells. Mutations in the chromosome 9 copy of ASS cause citrullinemia.

Synonyms: Argininosuccinate synthase

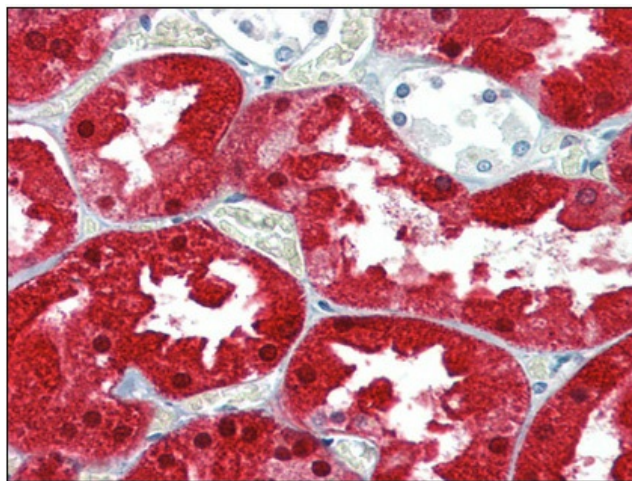
Protein Families: Druggable Genome

Protein Pathways: Alanine, aspartate and glutamate metabolism, Arginine and proline metabolism, Metabolic pathways

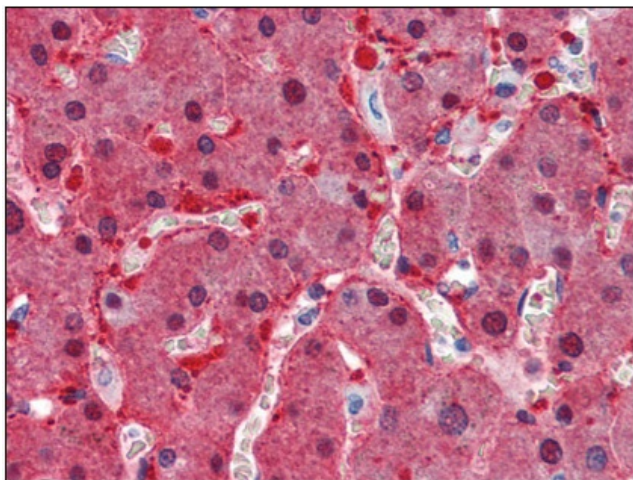
Product images:



Western Blot Image: Antibody (0.03 ug/ml) staining of Human Kidney lysate (35 ug protein in RIPA buffer). Primary incubation was 1 hour. Detected by chemiluminescence.



Immunohistochemistry Image: Human Kidney: Formalin-Fixed, Paraffin-Embedded (FFPE)



Immunohistochemistry Image: Human Liver:
Formalin-Fixed, Paraffin-Embedded (FFPE)