

Product datasheet for **AP23045PU-N**

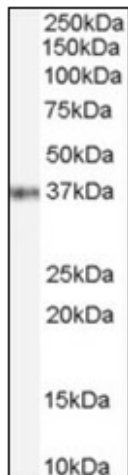
GBX2 (181-193) Goat Polyclonal Antibody

Product data:

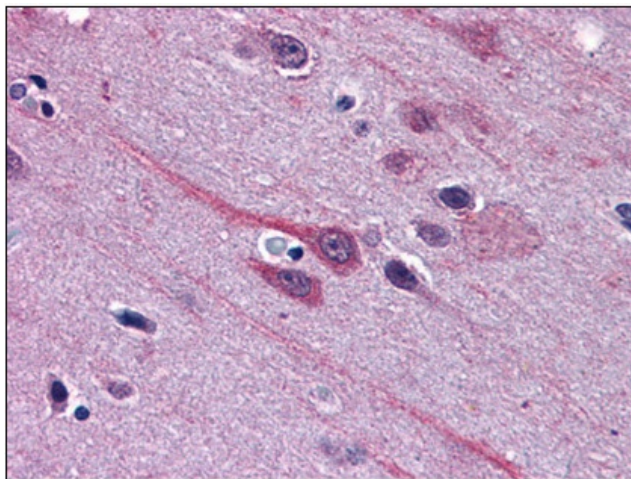
Product Type:	Primary Antibodies
Applications:	ELISA, IHC, WB
Recommended Dilution:	ELISA: 1/16000. Immunohistochemistry on Paraffin Sections: 3.75 µg/ml. Western Blot: 0.1 - 0.3 µg/ml.
Reactivity:	Human, Bovine, Bat, Canine, Equine, Hamster, Monkey, Mouse, Porcine, Rat
Host:	Goat
Clonality:	Polyclonal
Immunogen:	Synthetic peptide from an internal region of Human GBX2 (NP_001476.2)
Specificity:	This antibody detects GBX2 (Internal).
Formulation:	Tris saline buffer, pH~7.3 containing 0.5% BSA as stabilizer and 0.02% Sodium Azide as preservative State: Aff - Purified State: Liquid purified Ig fraction
Concentration:	lot specific
Purification:	Immunoaffinity Chromatography
Conjugation:	Unconjugated
Storage:	Store the antibody undiluted at 2-8°C for one month or (in aliquots) at -20°C for longer. Avoid repeated freezing and thawing.
Stability:	Shelf life: one year from despatch.
Gene Name:	gastrulation brain homeobox 2
Database Link:	Entrez Gene 14472 Mouse Entrez Gene 114500 Rat Entrez Gene 2637 Human P52951
Background:	May act as a transcription factor for cell pluripotency and differentiation in the embryo.
Synonyms:	Homeobox protein GBX-2



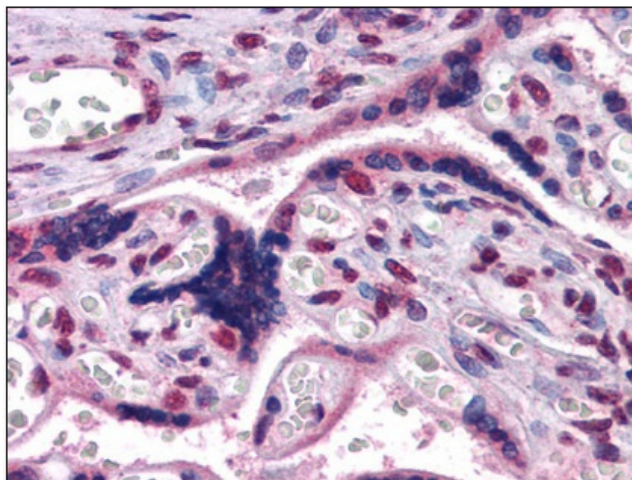
[View online »](#)

Product images:

Western Blot Image: Antibody (0.1 ug/ml) staining of Jurkat cell lysate (35 ug protein in RIPA buffer). Primary incubation was 1 hour. Detected by chemiluminescence.



Immunohistochemistry Image: Human Brain, cortex: Formalin-Fixed, Paraffin-Embedded (FFPE)



Immunohistochemistry Image: Human Placenta:
Formalin-Fixed, Paraffin-Embedded (FFPE)