

Product datasheet for **AP23041PU-N**

p27 KIP 1 (CDKN1B) (153-165) Goat Polyclonal Antibody

Product data:

| | |
|-----------------------|--|
| Product Type: | Primary Antibodies |
| Applications: | ELISA, IHC, WB |
| Recommended Dilution: | ELISA: 1/32000. Immunohistochemistry on Paraffin Sections: 5 µg/ml. Western Blot: 1/32000, 0.1 - 0.3 µg/ml. |
| Reactivity: | Human |
| Host: | Goat |
| Clonality: | Polyclonal |
| Immunogen: | Synthetic peptide from an internal region of human CDKN1B |
| Specificity: | This antibody reacts to the internal region of CDKN1B / p27 Kip1. |
| Formulation: | Tris saline buffer, pH 7.3 containing 0.5% BSA as stabilizer and 0.02% sodium azide as preservative State: Aff - Purified State: Liquid purified Ig fraction |
| Concentration: | lot specific |
| Purification: | Immunoaffinity chromatography |
| Conjugation: | Unconjugated |
| Storage: | Store the antibody undiluted at 2-8°C for one month or (in aliquots) at -20°C for longer. Avoid repeated freezing and thawing. |
| Stability: | Shelf life: one year from despatch. |
| Gene Name: | cyclin-dependent kinase inhibitor 1B |
| Database Link: | Entrez Gene 1027 Human P46527 |
| Background: | Important regulator of cell cycle progression. Involved in G1 arrest. Potent inhibitor of cyclin E- and cyclin A-CDK2 complexes. Forms a complex with cyclin type D-CDK4 complexes and is involved in the assembly, stability, and modulation of CCND1-CDK4 complex activation. Acts either as an inhibitor or an activator of cyclin type D-CDK4 complexes depending on its phosphorylation state and/or stoichiometry. |



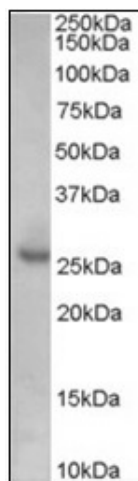
[View online »](#)

Synonyms: p27Kip1

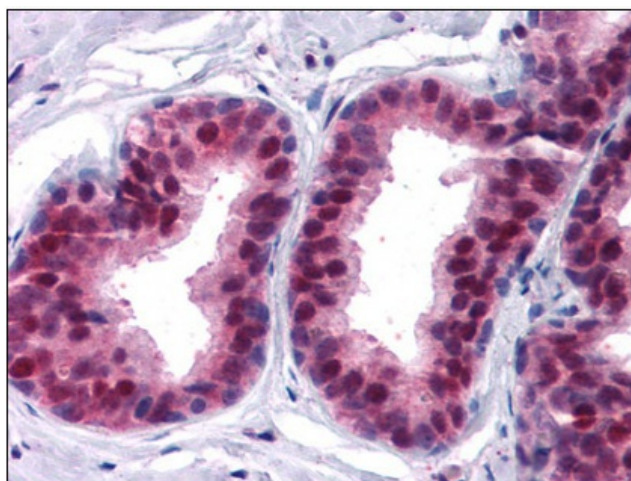
Protein Families: Druggable Genome

Protein Pathways: Cell cycle, Chronic myeloid leukemia, ErbB signaling pathway, Pathways in cancer, Prostate cancer, Small cell lung cancer

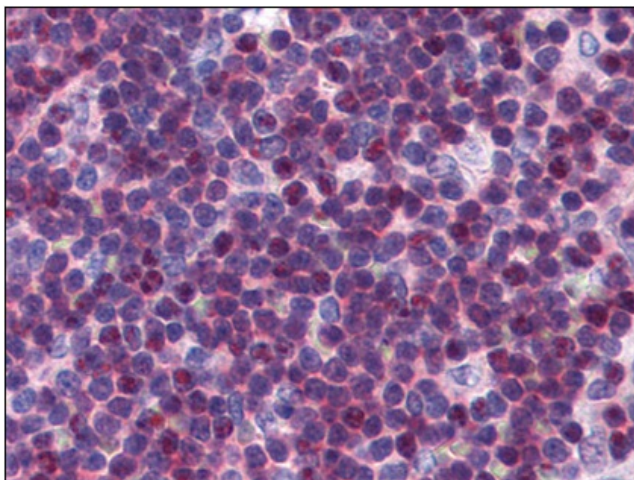
Product images:



Western Blot Image: Antibody (0.1 ug/ml) staining of Human Prostate lysate (35 ug protein in RIPA buffer). Primary incubation was 1 hour. Detected by chemiluminescence.



Immunohistochemistry Image: Human Prostate: Formalin-Fixed, Paraffin-Embedded (FFPE)



Immunohistochemistry Image: Human Spleen:
Formalin-Fixed, Paraffin-Embedded (FFPE)