

Product datasheet for **AP23040PU-N**

PDE4 (PDE4B) (723-736) Goat Polyclonal Antibody

Product data:

Product Type:	Primary Antibodies
Applications:	ELISA, IHC, WB
Recommended Dilution:	ELISA: 1/8000. Immunohistochemistry on Paraffin Sections: 5 µg/ml. Western Blot: 1/8000, 0.5 - 1 µg/ml.
Reactivity:	Human, Mouse
Host:	Goat
Clonality:	Polyclonal
Immunogen:	Synthetic peptide from C-terminus of Human PDE4B
Specificity:	This antibody detects PDE4B (C-term) and is expected to recognize all reported isoforms.
Formulation:	Tris saline buffer, pH~7.3 containing 0.5% BSA as stabilizer and 0.02% Sodium Azide as preservative State: Aff - Purified State: Liquid purified Ig fraction
Concentration:	lot specific
Purification:	Immunoaffinity Chromatography
Conjugation:	Unconjugated
Storage:	Store the antibody undiluted at 2-8°C for one month or (in aliquots) at -20°C for longer. Avoid repeated freezing and thawing.
Stability:	Shelf life: one year from despatch.
Gene Name:	phosphodiesterase 4B
Database Link:	Entrez Gene 18578 Mouse Entrez Gene 5142 Human Q07343
Background:	Phosphodiesterase 4B, a cAMP-specific phosphodiesterase, regulates pro-inflammatory and immune cells, and may function in learning, leukemia, memory (or other brain functions), and penile erectile dysfunction. PDE4B activity is inhibited by rolipram. At least three PDE4B isoforms, produced by alternative splicing, have been reported.
Synonyms:	PDE4B, DPDE4, cAMP-specific 3',5'-cyclic phosphodiesterase 4B, EC=3.1.4.17, PDE32

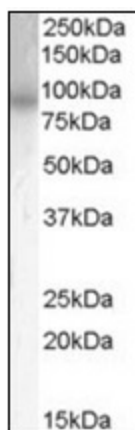


[View online »](#)

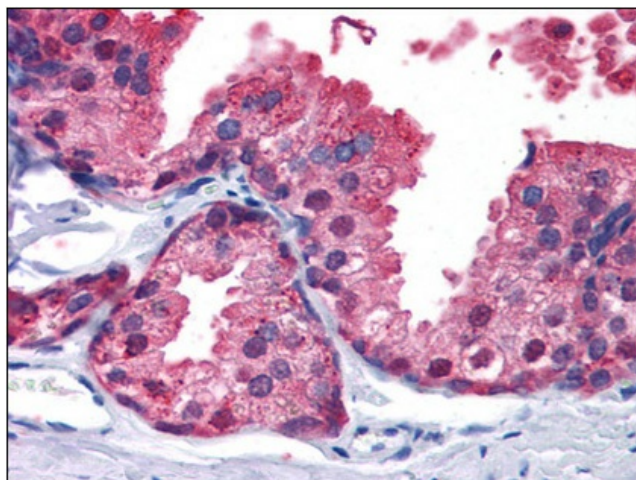
Protein Families: Druggable Genome

Protein Pathways: Progesterone-mediated oocyte maturation, Purine metabolism

Product images:



Western Blot Image: Antibody (0.5 ug/ml) staining of Mouse Brain Lysate (35 ug protein in RIPA buffer). Primary incubation was 1 hour. Detected by chemiluminescence.



Immunohistochemistry Image: Human Prostate: Formalin-Fixed, Paraffin-Embedded (FFPE)