

Product datasheet for **AP23038PU-N**

PDE4D (796-809) Goat Polyclonal Antibody

Product data:

Product Type:	Primary Antibodies
Applications:	ELISA, IHC, WB
Recommended Dilution:	ELISA: 1/128000. Immunohistochemistry on Paraffin Sections: 5 µg/ml. Western Blot: 0.1 - 1 µg/ml.
Reactivity:	Human
Host:	Goat
Clonality:	Polyclonal
Immunogen:	Synthetic peptide from C-terminus of human PDE4D
Specificity:	This antibody detects PDE4D (C-term). It is expected to recognize all reported isoforms.
Formulation:	Tris saline buffer, pH 7.3, 0.5% BSA, 0.02% sodium azide State: Aff - Purified State: Liquid Ig fraction
Concentration:	lot specific
Purification:	Immunoaffinity chromatography
Conjugation:	Unconjugated
Storage:	Store at 2 - 8 °C for up to one month or (in aliquots) at -20 °C for longer. Avoid repeated freezing and thawing.
Stability:	Shelf life: one year from despatch.
Gene Name:	phosphodiesterase 4D
Database Link:	Entrez Gene 5144 Human Q08499



[View online »](#)

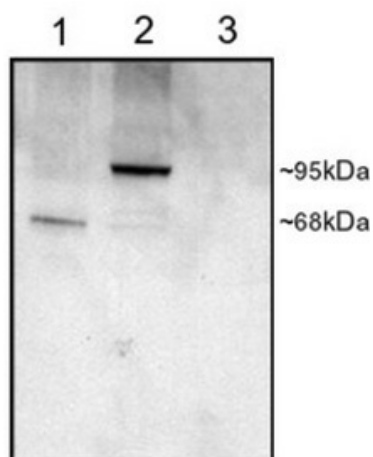
Background: Phosphodiesterase 4D, a cAMP-specific phosphodiesterase, has been shown to affect growth and fertility, functioning of pro-inflammatory immune cells, and cholinergic stimulation of the airway and consequently the development of hyperreactive disease states such as asthma. PDE4D activity is inhibited by rolipram. At least six splice variants have been reported. Recently PDE4D has been linked to stroke, possibly through atherosclerosis, which is the primary pathological process underlying ischemic stroke (Gretarsdottir et al. 2003).

Synonyms: PDE4D, DPDE3, cAMP-specific 3',5'-cyclic phosphodiesterase 4D, EC=3.1.4.17, DPDE3, PDE43

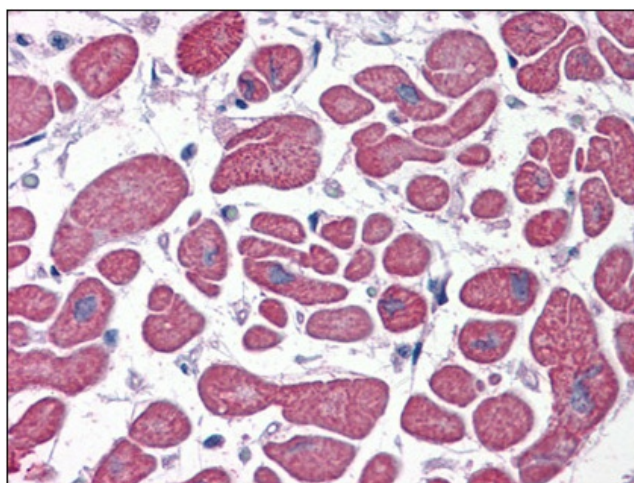
Protein Families: Druggable Genome

Protein Pathways: Progesterone-mediated oocyte maturation, Purine metabolism

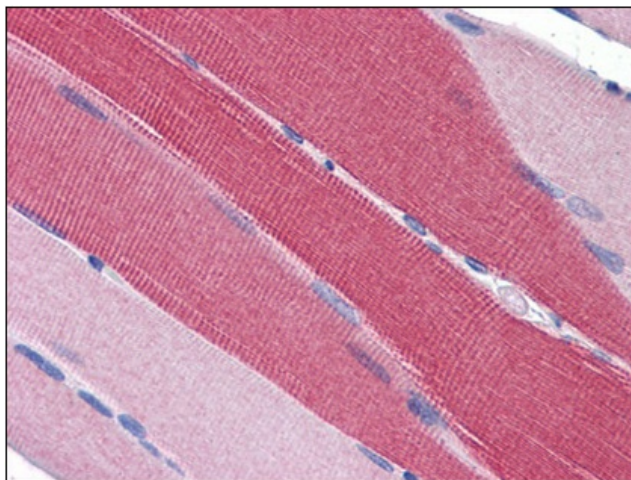
Product images:



Western Blot Image: Antibody staining (1 ug/ml) of COS cell lysates (25 ug protein): transfected with Human PDE4D1 (1), transfected with Human PDE4D3 (2), untransfected (3). Primary incubation was 1 hour. Detected by chemiluminescence.



Immunohistochemistry Image: Human Heart: Formalin-Fixed, Paraffin-Embedded (FFPE)



Immunohistochemistry Image: Human Skeletal Muscle: Formalin-Fixed, Paraffin-Embedded (FFPE)