

Product datasheet for **AP23037PU-N**

PTCH1 (1431-1442) Goat Polyclonal Antibody

Product data:

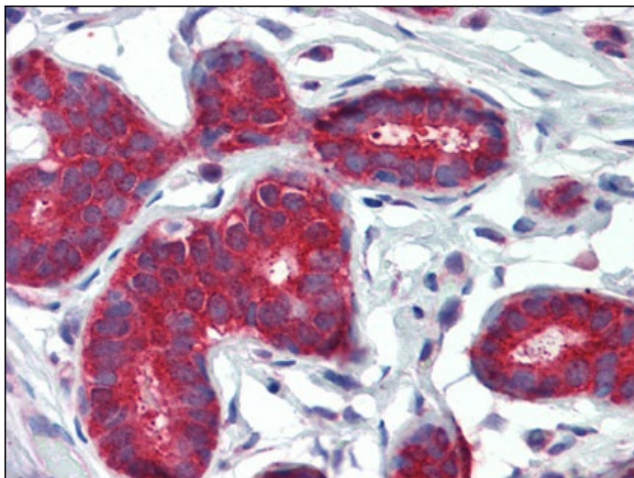
Product Type:	Primary Antibodies
Applications:	ELISA, IHC
Recommended Dilution:	ELISA: 1/8000. Immunohistochemistry on Paraffin Sections: 3.75 µg/ml.
Reactivity:	Human, Bat, Canine, Equine, Monkey
Host:	Goat
Clonality:	Polyclonal
Immunogen:	Synthetic peptide from C-terminus of human PTCH1
Specificity:	This antibody detects PTCH1 (C-term). It is expected to recognise all reported isoforms.
Formulation:	Tris saline buffer, pH 7.3, 0.5% BSA, 0.02% sodium azide State: Aff - Purified State: Liquid Ig fraction
Concentration:	lot specific
Purification:	Immunoaffinity Chromatography
Conjugation:	Unconjugated
Storage:	Store at 2 - 8 °C for up to one month or (in aliquots) at -20 °C for longer. Avoid repeated freezing and thawing.
Stability:	Shelf life: one year from despatch.
Gene Name:	patched 1
Database Link:	Entrez Gene 5727 Human Q13635
Background:	PTCH1 / Patched 1 is a member of the patched gene family. The encoded protein is the receptor for sonic hedgehog, a secreted molecule implicated in the formation of embryonic structures and in tumorigenesis, as well as the desert hedgehog and indian hedgehog proteins. This gene functions as a tumor suppressor.
Synonyms:	PTCH, PTC1, PTC, Patched 1
Protein Families:	Druggable Genome, ES Cell Differentiation/IPS, Transmembrane



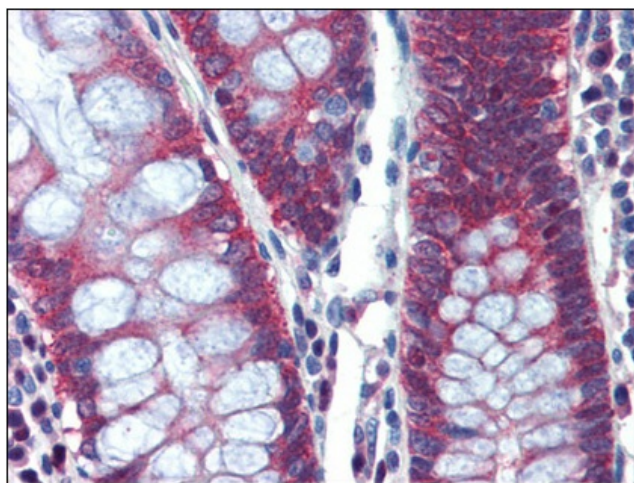
[View online »](#)

Protein Pathways: Basal cell carcinoma, Hedgehog signaling pathway, Pathways in cancer

Product images:



Immunohistochemistry Image: Human Breast:
Formalin-Fixed, Paraffin-Embedded (FFPE)



Immunohistochemistry Image: Human Colon:
Formalin-Fixed, Paraffin-Embedded (FFPE)