

Product datasheet for **AP23035PU-N**

GAD65 (GAD2) (515-528) Goat Polyclonal Antibody

Product data:

Product Type:	Primary Antibodies
Applications:	ELISA, IHC, WB
Recommended Dilution:	ELISA: 1/32000. Immunohistochemistry on Paraffin Sections: 2.5 µg/ml. Western Blot: 1/32000, 0.1 - 0.3 µg/ml.
Reactivity:	Human, Monkey, Mouse
Host:	Goat
Clonality:	Polyclonal
Immunogen:	Synthetic peptide from an internal region of human GAD2
Specificity:	This antibody detects GAD2 / GAD65 (Internal).
Formulation:	Tris saline buffer, pH 7.3, 0.5% BSA, 0.02% sodium azide State: Aff - Purified State: Liquid Ig fraction
Concentration:	lot specific
Purification:	Immunoaffinity chromatography
Conjugation:	Unconjugated
Storage:	Store undiluted at 2-8°C for one month or (in aliquots) at -20°C for longer. Avoid repeated freezing and thawing.
Stability:	Shelf life: one year from despatch.
Gene Name:	glutamate decarboxylase 2
Database Link:	Entrez Gene 14417 Mouse Entrez Gene 613029 Monkey Entrez Gene 2572 Human Q05329
Background:	GAD65 is one of several forms of glutamic acid decarboxylase, identified as a major autoantigen in insulin-dependent diabetes. The enzyme encoded is responsible for catalyzing the production of gamma-aminobutyric acid from L-glutamic acid. A pathogenic role for this enzyme has been identified in the human pancreas since it has been identified as an autoantibody and an autoreactive T cell target in insulin-dependent diabetes. This gene may also play a role in the stiff man syndrome.



[View online »](#)

Synonyms: GAD-2, GAD-65, Glutamate decarboxylase 2

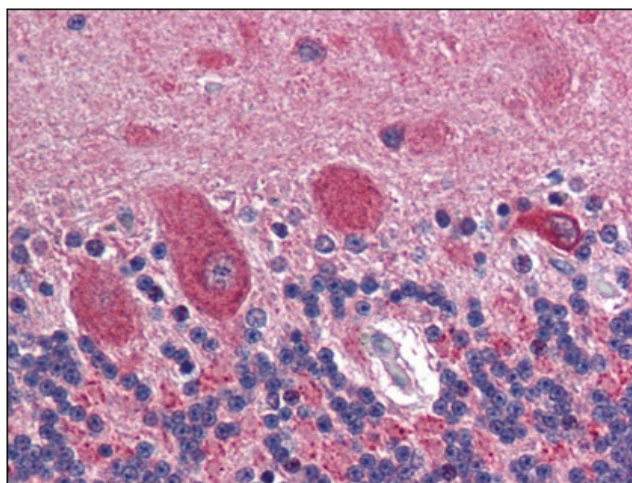
Protein Families: Druggable Genome

Protein Pathways: Alanine, aspartate and glutamate metabolism, beta-Alanine metabolism, Butanoate metabolism, Metabolic pathways, Taurine and hypotaurine metabolism, Type I diabetes mellitus

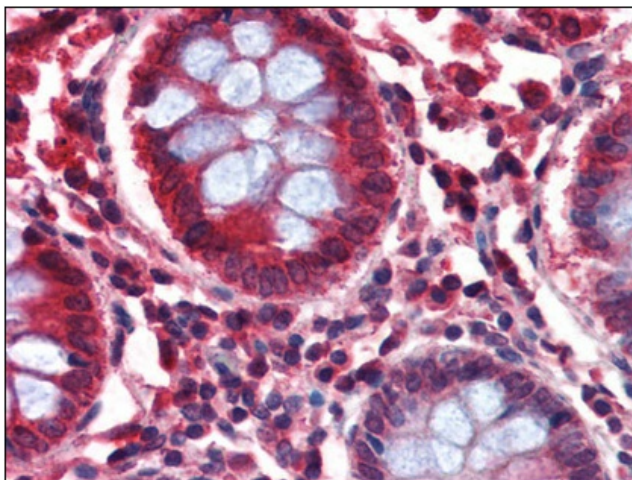
Product images:



Western Blot Image: Antibody (0.1 ug/ml) staining of Human Brain lysate (35 ug protein in RIPA buffer). Primary incubation was 1 hour. Detected by chemiluminescence.



Immunohistochemistry Image: Human Brain, cerebellum: Formalin-Fixed, Paraffin-Embedded (FFPE)



Immunohistochemistry Image: Human Colon:
Formalin-Fixed, Paraffin-Embedded (FFPE)