

Product datasheet for **AP23034PU-N**

PAI1 (SERPINE1) (71-85) Goat Polyclonal Antibody

Product data:

Product Type:	Primary Antibodies
Applications:	ELISA, IHC, WB
Recommended Dilution:	ELISA: 1/32000. Immunohistochemistry on Paraffin Sections: 2.5 µg/ml. Western Blot: 0.1 - 0.3 µg/ml.
Reactivity:	Equine, Human, Marmoset, Monkey, Gorilla
Host:	Goat
Clonality:	Polyclonal
Immunogen:	Synthetic peptide from internal region of Human PAI1 (NP_000593.1; NP_001158885.1)
Specificity:	This antibody detects SERPINE1 / PAI1 (Internal). It is expected to recognise both reported isoforms.
Formulation:	Tris saline buffer, pH 7.3 State: Aff - Purified State: Liquid purified Ig fraction Stabilizer: 0.5% BSA Preservative: 0.02% Sodium Azide
Concentration:	lot specific
Purification:	Immunoaffinity Chromatography
Conjugation:	Unconjugated
Storage:	Upon receipt, store undiluted (in aliquots) at -20°C. Avoid repeated freezing and thawing.
Stability:	Shelf life: one year from despatch.
Gene Name:	serpin family E member 1
Database Link:	Entrez Gene 5054 Human P05121



[View online »](#)

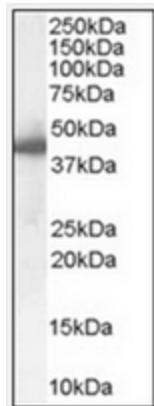
Background: PAI1 (plasminogen activator inhibitor 1) is originally cloned from human endothelial cell (Pannekoek 1986, Ginsburg 1986) and rat hepatoma cell 3 cDNA libraries. As a member of the serpin family of serine protease inhibitors, PAI1 inhibits both tissue type plasminogen activator (tPA) and urokinase type plasminogen activator (uPA). High PAI1 levels are associated with an increased risk of thromboembolic disease while PAI1 deficiency may represent an inherited autosomal recessive bleeding disorder.

Synonyms: Serpin E1, PLANH1, Plasminogen Activator Inhibitor 1, PAI-1, PAI

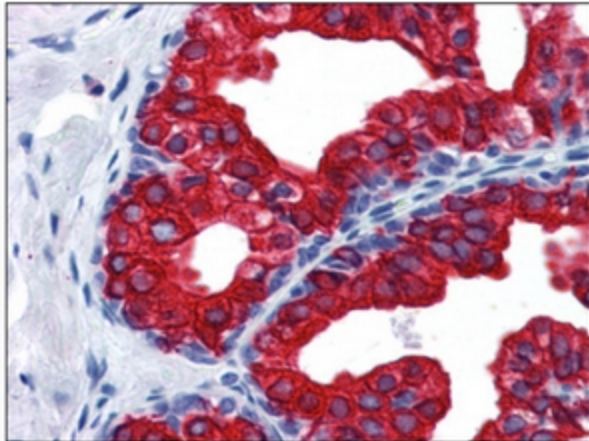
Protein Families: Druggable Genome, Secreted Protein

Protein Pathways: Complement and coagulation cascades, p53 signaling pathway

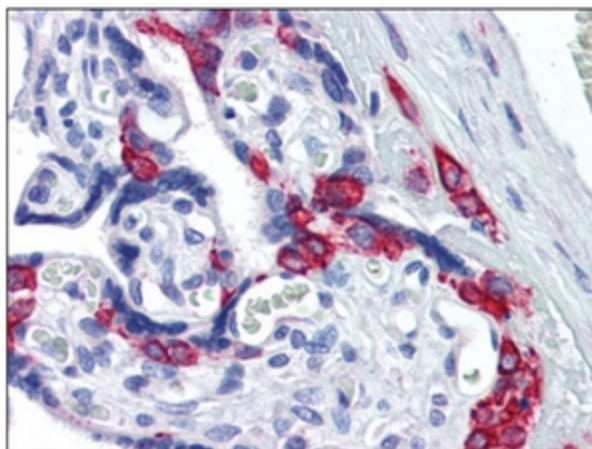
Product images:



Staining of Human Liver lysate (35 ug protein in RIPA buffer) using PAI1 antibody. Primary incubation was 1 hour. Detected by chemiluminescence.



Formalin-Fixed, Paraffin-Embedded Human Prostate stained with PAI1 antibody at 2.5 ug/ml after heat-induced antigen retrieval.



Formalin-Fixed, Paraffin-Embedded Human Placenta stained with PAI1 antibody at 2.5 ug/ml after heat-induced antigen retrieval.