

Product datasheet for **AP23027PU-N**

FOXA2 (453-463) Goat Polyclonal Antibody

Product data:

Product Type:	Primary Antibodies
Applications:	ELISA, IHC, WB
Recommended Dilution:	ELISA: 1/2000. Immunohistochemistry on Paraffin Sections: 3.75 µg/ml. Western Blot: 1-3 µg/ml.
Reactivity:	Human, Bovine, Bat, Canine, Chicken, Equine, Hamster, Monkey, Mouse, Porcine, Rabbit, Rat, Xenopus
Host:	Goat
Clonality:	Polyclonal
Immunogen:	Synthetic peptide from C-terminus of human FOXA2
Specificity:	This antibody detects FOXA2 / HNF3B (C-term). This antibody is expected to recognize both reported isoforms.
Formulation:	Tris saline buffer, pH 7.3 containing 0.5% BSA as stabilizer and 0.02% sodium azide as preservative State: Aff - Purified State: Liquid purified Ig fraction
Concentration:	lot specific
Purification:	Immunoaffinity chromatography
Conjugation:	Unconjugated
Storage:	Store the antibody undiluted at 2-8°C for one month or (in aliquots) at -20°C for longer. Avoid repeated freezing and thawing.
Stability:	Shelf life: one year from despatch.
Gene Name:	forkhead box A2
Database Link:	Entrez Gene 15376 Mouse Entrez Gene 25099 Rat Entrez Gene 3170 Human Q9Y261



[View online »](#)

Background:

Transcription factor that is involved in embryonic development, establishment of tissue-specific gene expression and regulation of gene expression in differentiated tissues. Is thought to act as a 'pioneer' factor opening the compacted chromatin for other proteins through interactions with nucleosomal core histones and thereby replacing linker histones at target enhancer and/or promoter sites. Binds DNA with the consensus sequence 5'-[AC]A[AT]T[AG]TT[GT][AG][CT]T[CT]-3' (By similarity).

Synonyms:

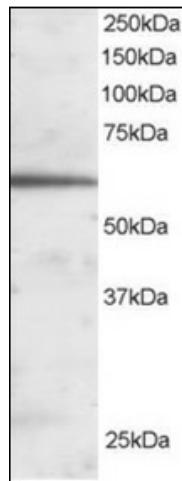
HNF-3-beta, HNF-3B, TCF3B

Protein Families:

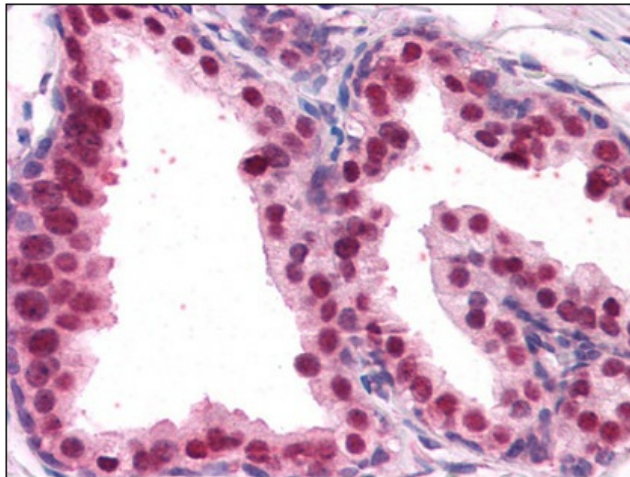
Embryonic stem cells, ES Cell Differentiation/IPS, Induced pluripotent stem cells, Transcription Factors

Protein Pathways:

Maturity onset diabetes of the young

Product images:


Western Blot Image: Antibody staining (1 ug/ml) of Human Liver lysate (RIPA buffer, 30 ug total protein per lane). Primary incubated for 1 hour. Detected by western blot using chemiluminescence.



Immunohistochemistry Image: Human Prostate: Formalin-Fixed, Paraffin-Embedded (FFPE)