

Product datasheet for **AP23026PU-N**

KAP1 (TRIM28) (823-835) Goat Polyclonal Antibody

Product data:

Product Type:	Primary Antibodies
Applications:	ELISA, IF, IHC, WB
Recommended Dilution:	ELISA. Immunofluorescence. Immunohistochemistry on Paraffin Sections: 2.5 µg/ml. Western Blot: 0.2 - 1 µg/ml.
Reactivity:	Human, Monkey
Host:	Goat
Clonality:	Polyclonal
Immunogen:	Synthetic peptide from C Terminus of human KAP1 / TRIM28
Specificity:	This antibody detects TIF1-beta / TRIM28 at C-term.
Formulation:	Tris saline buffer, pH 7.3 containing 0.5% BSA as stabilizer and 0.02% sodium azide as preservative State: Aff - Purified State: Liquid purified Ig fraction
Concentration:	lot specific
Purification:	Immunoaffinity chromatography
Conjugation:	Unconjugated
Storage:	Store the antibody undiluted at 2-8°C for one month or (in aliquots) at -20°C for longer. Avoid repeated freezing and thawing.
Stability:	Shelf life: one year from despatch.
Gene Name:	tripartite motif containing 28
Database Link:	Entrez Gene 10155 Human Q13263



[View online »](#)

Background:

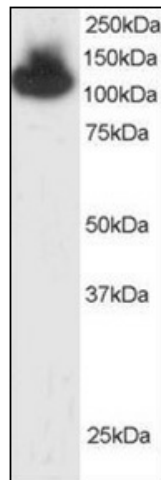
TIF1beta is a member of the Transcriptional Intermediary Factor 1 (TIF1) subfamily. TIF1beta contains a RING finger, B box, Coiled coil, PHD/TTC, and bromodomain. TIF1beta is a corepressor for Kruppel-associated box (KRAB)-domain-containing zinc finger proteins and plays a critical role in early embryogenesis. TIF1beta acts as a transcriptional mediator by binding liganded nuclear receptors, including retinoic acid (RAR), retinoid X (RXR) and estrogen (ER) receptors. TIF1beta associates with both heterochromatin and euchromatin, causing gene silencing by both HP1 binding and histone deacetylation.

Synonyms:

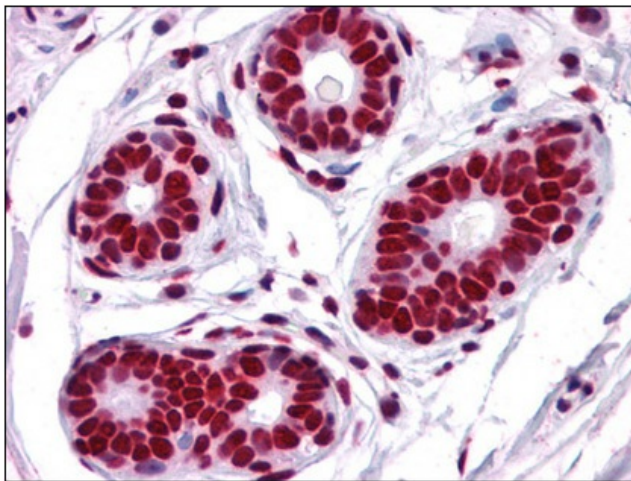
TIF1 beta, TIF1B, KAP1, KAP-1, KRIP1, KRIP-1, RNF96, RING finger protein 96

Protein Families:

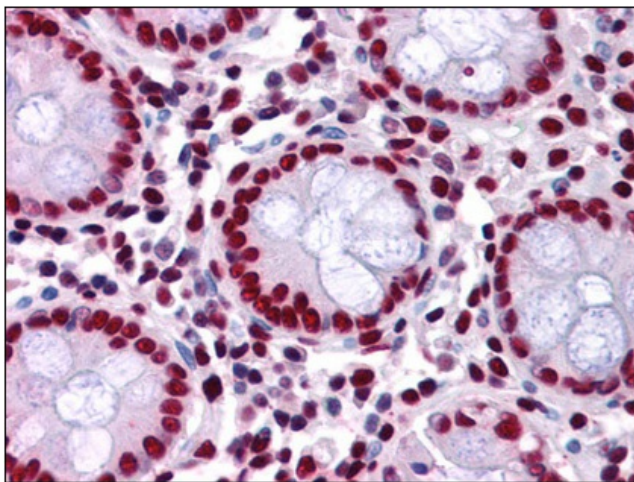
Protein Kinase, Stem cell - Pluripotency, Transcription Factors

Product images:


Western Blot Image: Staining (0.5 ug/ml) of HepG2 lysate (RIPA buffer, 30 ug total protein per lane). Primary incubated for 1 hour. Detected by chemiluminescence.



Immunohistochemistry Image: Human Breast: Formalin-Fixed, Paraffin-Embedded (FFPE)



Immunohistochemistry Image: Human Colon:
Formalin-Fixed, Paraffin-Embedded (FFPE)