

Product datasheet for **AP23024PU-N**

TXNRD1 (600-612) Goat Polyclonal Antibody

Product data:

Product Type:	Primary Antibodies
Applications:	ELISA, IHC, WB
Recommended Dilution:	ELISA: 1/32000. Immunohistochemistry on Paraffin Sections: 2.5 µg/ml. Western Blot: 1/32000, 0.1 - 1 µg/ml.
Reactivity:	Human, Canine, Monkey, Porcine
Host:	Goat
Clonality:	Polyclonal
Immunogen:	Synthetic peptide from C-terminus of human TXNRD1
Specificity:	This antibody detects Thioredoxin reductase 1 (TXNRD1) (C-term). It is expected to recognise reported isoform 1 (NP_003321.2), isoform 2 (NP_877393.1; NP_877419.1; NP_877420.1) and isoform 3 (NP_001087240.1).
Formulation:	Tris saline buffer, pH 7.3 containing 0.5% BSA as stabilizer and 0.02% sodium azide as preservative State: Aff - Purified State: Liquid purified Ig fraction
Concentration:	lot specific
Purification:	Immunoaffinity chromatography
Conjugation:	Unconjugated
Storage:	Store the antibody undiluted at 2-8°C for one month or (in aliquots) at -20°C for longer. Avoid repeated freezing and thawing.
Stability:	Shelf life: one year from despatch.
Gene Name:	thioredoxin reductase 1
Database Link:	Entrez Gene 7296 Human Q16881



[View online »](#)

Background:

TRXR1 / TXNRD1 is a member of the family of pyridine nucleotide oxidoreductases. This protein reduces thioredoxins as well as other substrates, and plays a role in selenium metabolism and protection against oxidative stress. The functional enzyme is thought to be a homodimer which uses FAD as a cofactor. Each subunit contains a selenocysteine (Sec) residue which is required for catalytic activity. The selenocysteine is encoded by the UGA codon that normally signals translation termination.

Synonyms:

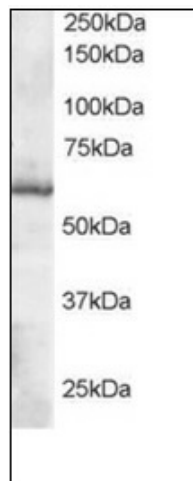
KDRF, GRIM-12

Protein Families:

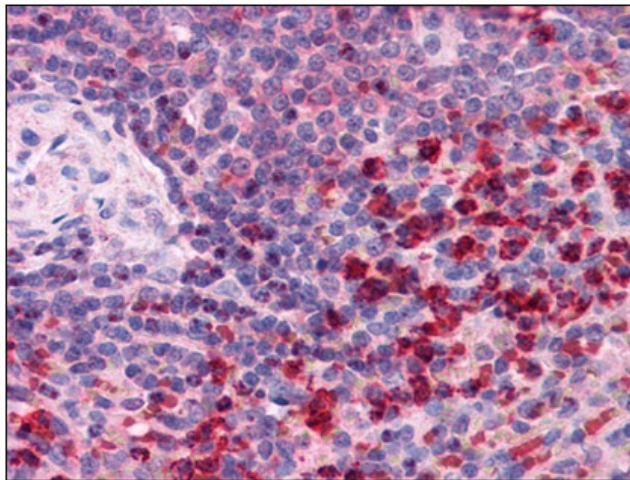
Druggable Genome

Protein Pathways:

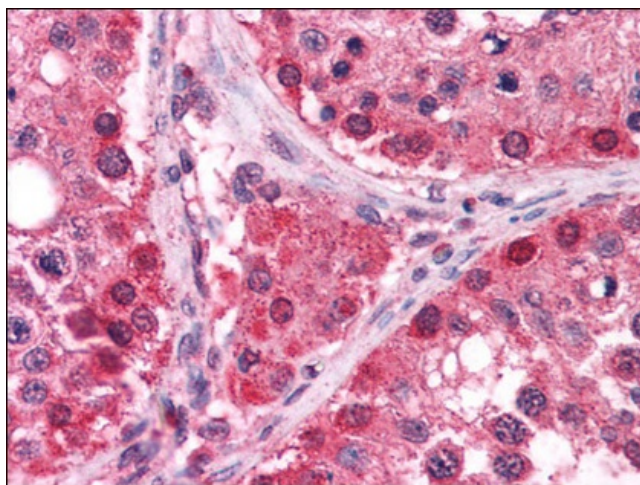
Pyrimidine metabolism

Product images:

Western Blot Image: Antibody staining (0.1 ug/ml) of Human Placenta lysate (RIPA buffer, 35 ug total protein per lane). Primary incubated for 1 hour. Detected by western blot using chemiluminescence.



Immunohistochemistry Image: Human Spleen: Formalin-Fixed, Paraffin-Embedded (FFPE)



Immunohistochemistry Image: Human Testis:
Formalin-Fixed, Paraffin-Embedded (FFPE)