

Product datasheet for **AP23023PU-N**

BAG3 (C-term) Goat Polyclonal Antibody

Product data:

Product Type:	Primary Antibodies
Applications:	ELISA, IHC, WB
Recommended Dilution:	ELISA: 1/8000. Immunohistochemistry on Paraffin Sections: 3.75 µg/ml. Western Blot.
Reactivity:	Human
Host:	Goat
Clonality:	Polyclonal
Immunogen:	Synthetic peptide from C-terminus of human BAG3
Specificity:	This antibody detects BAG3 (C-term).
Formulation:	Tris saline buffer, pH 7.3 containing 0.5% BSA as stabilizer and 0.02% sodium azide as preservative State: Purified State: Liquid purified Ig fraction
Concentration:	lot specific
Purification:	Immunoaffinity chromatography
Conjugation:	Unconjugated
Storage:	Store the antibody undiluted at 2-8°C for one month or (in aliquots) at -20°C for longer. Avoid repeated freezing and thawing.
Stability:	Shelf life: one year from despatch.
Gene Name:	BCL2 associated athanogene 3
Database Link:	Entrez Gene 9531 Human O95817



[View online »](#)

Background:

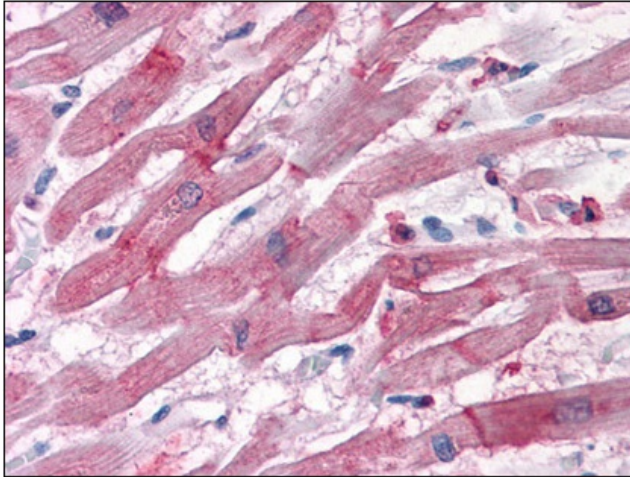
This protein has a number of names including Bis, CAIR-1, and BAG-3 and belongs to a family of proteins that share the BAG domain. BAG-3 binds to HSP-70 and inhibits Hsp-mediated proteasomal degradation by virtue of its C-terminal BAG domain that interacts with the ATP binding site of Hsp-70. This protein has also been shown to interact with Bcl-2 and by it self exerts weak anti-apoptotic activity but is synergistic with Bcl-2 in preventing Bax-induced and Fas-mediated apoptosis.

Synonyms:

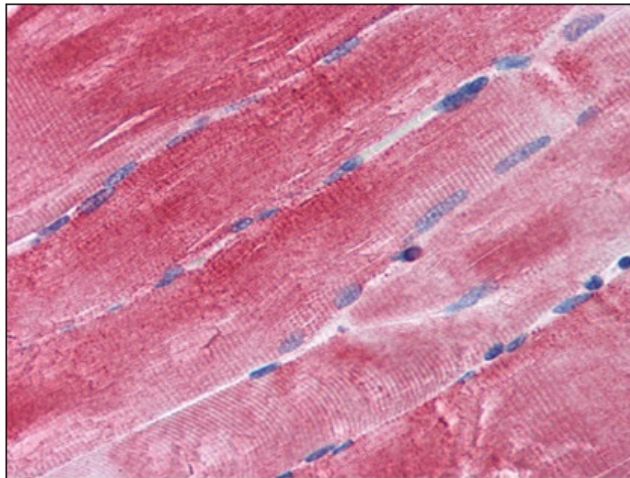
BAG-3, BIS, Docking protein CAIR-1

Protein Families:

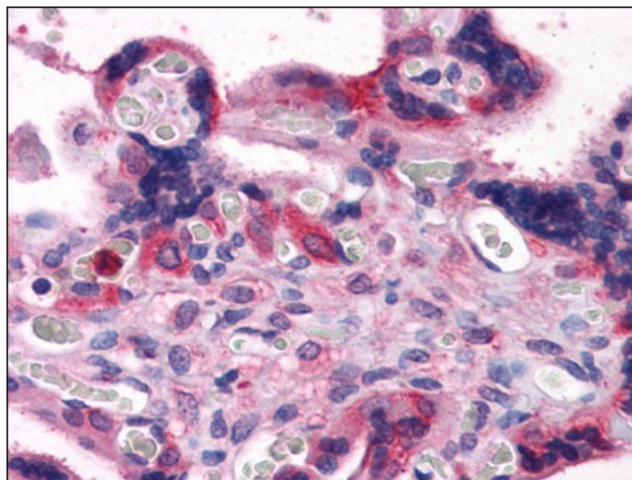
Druggable Genome

Product images:

Immunohistochemistry Image: Human Heart:
Formalin-Fixed, Paraffin-Embedded (FFPE)



Immunohistochemistry Image: Human Skeletal
Muscle: Formalin-Fixed, Paraffin-Embedded
(FFPE)



Immunohistochemistry Image: Human Placenta:
Formalin-Fixed, Paraffin-Embedded (FFPE)