

## Product datasheet for **AP23022PU-N**

### **APE1 (APEX1) (2-15) Goat Polyclonal Antibody**

#### Product data:

Product Type:	Primary Antibodies
Applications:	ELISA, IHC, WB
Recommended Dilution:	<b>ELISA.</b> <b>Immunohistochemistry on Paraffin Sections:</b> 5 µg/ml. <b>Western Blot:</b> 0.2 - 1 µg/ml.
Reactivity:	Human
Host:	Goat
Clonality:	Polyclonal
Immunogen:	Synthetic peptide from N Terminus of APE1 / APEX1 - KLH conjugated
Specificity:	This antibody detects APEX1 / REF-1 (N-term).
Formulation:	Tris saline buffer, pH 7.3, 0.5% BSA, 0.02% sodium azide State: Aff - Purified State: Liquid Ig fraction
Concentration:	lot specific
Purification:	Immunoaffinity chromatography
Conjugation:	Unconjugated
Storage:	Store at 2 - 8 °C for up to one month or (in aliquots) at -20 °C for longer. Avoid repeated freezing and thawing.
Stability:	Shelf life: one year from despatch.
Gene Name:	apurinic/aprimidinic endodeoxyribonuclease 1
Database Link:	<a href="#">Entrez Gene 328 Human P27695</a>
Background:	Apurinic/aprimidinic (AP) sites occur frequently in DNA molecules by spontaneous hydrolysis, by DNA damaging agents or by DNA glycosylases that remove specific abnormal bases. AP sites are pre-mutagenic lesions that can prevent normal DNA replication so the cell contains systems to identify and repair such sites. Class II AP endonucleases cleave the phosphodiester backbone 5' to the AP site. This gene encodes the major AP endonuclease in human cells. Splice variants have been found for this gene; all encode the same protein.



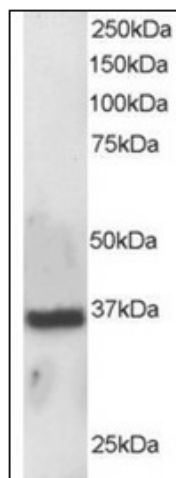
[View online »](#)

**Synonyms:** APE, APEX, APX, HAP1, REF1, APEN

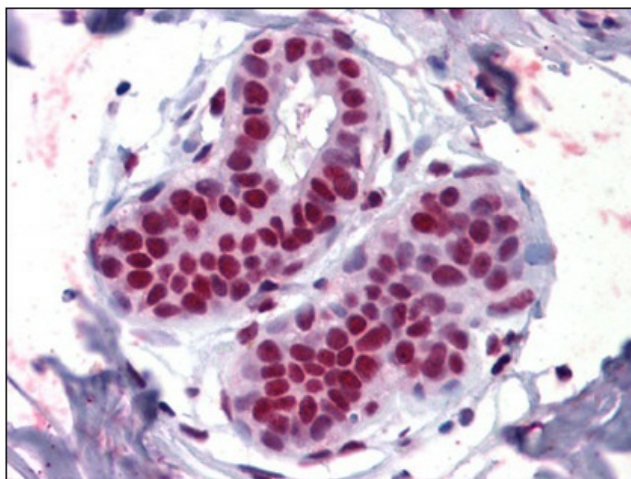
**Protein Families:** Druggable Genome, Stem cell - Pluripotency, Transcription Factors

**Protein Pathways:** Base excision repair

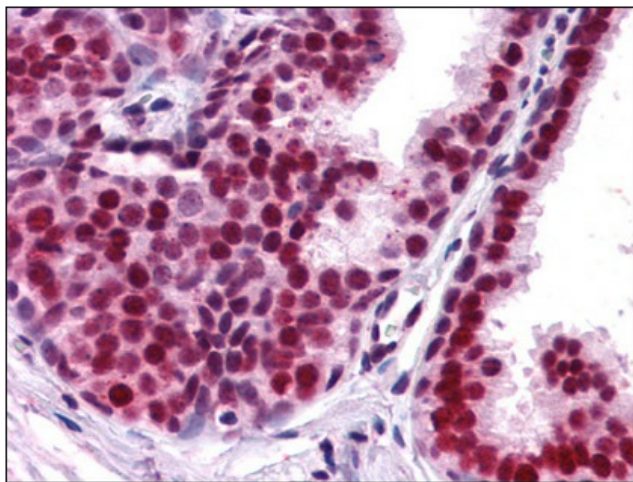
**Product images:**



Western Blot Image: Staining (0.5ug/ml) of A431 lysate (RIPA buffer, 30ug total protein per lane). Primary incubated for 1 hour. Detected using chemiluminescence.



Immunohistochemistry Image: Human Breast: Formalin-Fixed, Paraffin-Embedded (FFPE)



Immunohistochemistry Image: Human Prostate:  
Formalin-Fixed, Paraffin-Embedded (FFPE)