

Product datasheet for **AP23021PU-N**

GRB2 (C-term) Goat Polyclonal Antibody

Product data:

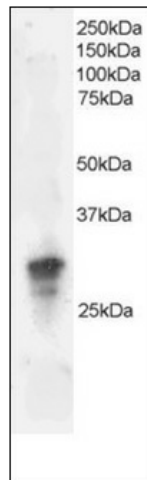
Product Type:	Primary Antibodies
Applications:	ELISA, IHC, WB
Recommended Dilution:	ELISA: 1/32000. Immunohistochemistry on Paraffin Sections: 5 µg/ml. Western Blot: 1 - 3 µg/ml.
Reactivity:	Human, Bovine, Bat, Canine, Equine, Hamster, Monkey, Mouse, Porcine, Rabbit, Rat
Host:	Goat
Clonality:	Polyclonal
Immunogen:	Synthetic peptide from C Terminus of human GRB2 - KLH conjugated
Specificity:	This antibody detects GRB2 / ASH (C-term).
Formulation:	Tris saline buffer, pH 7.3, 0.5% BSA, 0.02% sodium azide State: Purified State: Liquid Ig fraction
Concentration:	lot specific
Purification:	Immunoaffinity chromatography
Conjugation:	Unconjugated
Storage:	Store at 2 - 8 °C for up to one month or (in aliquots) at -20 °C for longer. Avoid repeated freezing and thawing.
Stability:	Shelf life: one year from despatch.
Gene Name:	growth factor receptor bound protein 2
Database Link:	Entrez Gene 14784 Mouse Entrez Gene 81504 Rat Entrez Gene 2885 Human P62993
Synonyms:	Growth factor receptor-bound protein 2
Protein Families:	Druggable Genome



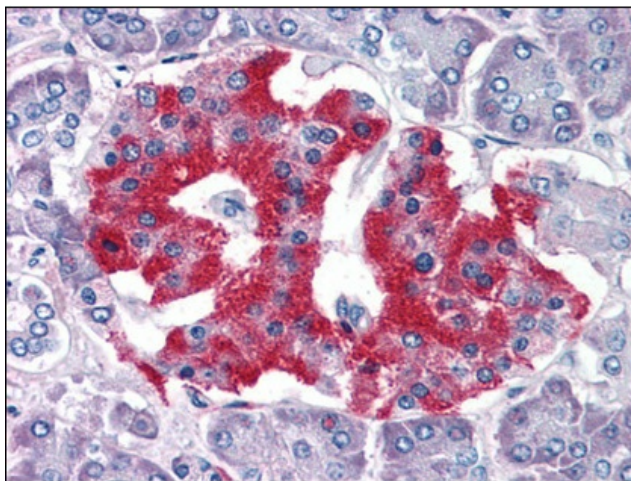
[View online »](#)

Protein Pathways:

Acute myeloid leukemia, B cell receptor signaling pathway, Chemokine signaling pathway, Chronic myeloid leukemia, Colorectal cancer, Dorso-ventral axis formation, Endometrial cancer, ErbB signaling pathway, Fc epsilon RI signaling pathway, Focal adhesion, Gap junction, Glioma, GnRH signaling pathway, Insulin signaling pathway, Jak-STAT signaling pathway, MAPK signaling pathway, Natural killer cell mediated cytotoxicity, Neurotrophin signaling pathway, Non-small cell lung cancer, Pathways in cancer, Prostate cancer, Renal cell carcinoma, T cell receptor signaling pathway

Product images:

Western Blot Image: Staining (2ug/ml) of Jurkat lysate (RIPA buffer, 35ug total protein per lane). Primary incubated for 1 hour. Detected using chemiluminescence.



Immunohistochemistry Image: Human Pancreas: Formalin-Fixed, Paraffin-Embedded (FFPE)