

## Product datasheet for **AP23017PU-N**

### HDAC2 (N-term) Rabbit Polyclonal Antibody

#### Product data:

Product Type:	Primary Antibodies
Applications:	IHC, WB
Recommended Dilution:	<b>Immunohistochemistry on Paraffin Sections:</b> 20 µg/ml. <b>Western Blot.</b>
Reactivity:	Human, Mouse
Host:	Rabbit
Isotype:	IgG
Clonality:	Polyclonal
Immunogen:	Recombinant mouse HDAC2
Specificity:	This antibody reacts to Histone Deacetylase 2 (HDAC2)
Formulation:	Phosphate-buffered solution, pH 7.2 containing 0.09% sodium azide, 50% glycerol State: Aff - Purified State: Liquid purified Ig fraction
Concentration:	lot specific
Purification:	Immunoaffinity chromatography
Conjugation:	Unconjugated
Storage:	Store the antibody (in aliquots) at -20°C. Avoid repeated freezing and thawing.
Stability:	Shelf life: one year from despatch.
Gene Name:	histone deacetylase 2
Database Link:	<a href="#">Entrez Gene 15182 Mouse</a> <a href="#">Entrez Gene 3066 Human</a> <a href="#">Q92769</a>
Background:	Histone deacetylase 2 (HDAC2), or transcriptional regulator homolog RPD3 L1, is highly homologous to the yeast transcription factor RPD3 (reduced potassium dependency 3) gene. As in yeast, human HDA2 is likely to be involved in regulating chromatin structure during transcription. It has been implicated to associate with YY1, a mammalian zinc-finger transcription factor, which negatively regulates transcription by tethering RPD3 to DNA as a cofactor. This process is highly conserved from yeast to human.



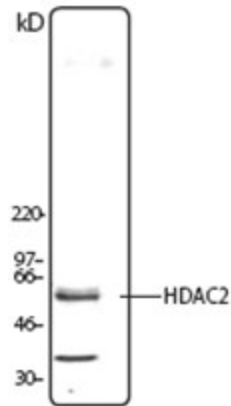
[View online »](#)

**Synonyms:** Histone deacetylase 2, HD2

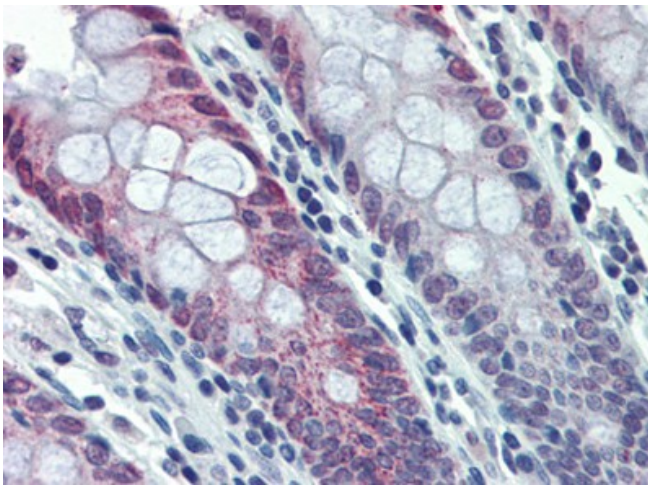
**Protein Families:** Druggable Genome, Stem cell - Pluripotency, Transcription Factors

**Protein Pathways:** Cell cycle, Chronic myeloid leukemia, Huntington's disease, Notch signaling pathway, Pathways in cancer

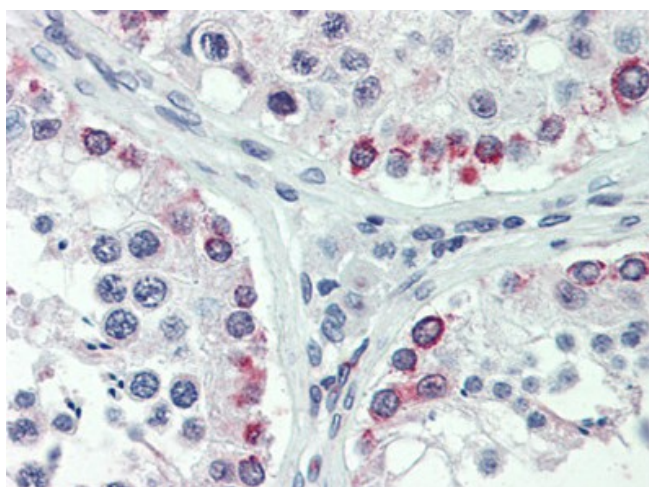
**Product images:**



Jurkat nuclear extract was resolved by electrophoresis, transferred to nitrocellulose and probed with rabbit anti-HDAC2 antibody. Proteins were visualized using a donkey anti-rabbit secondary conjugated to HRP and a chemiluminescence detection system.



IHC Image for Human Colon: Formalin-Fixed, Paraffin-Embedded (FFPE)



IHC Image of Human Testis: Formalin-Fixed, Paraffin-Embedded (FFPE)