

## Product datasheet for **AP23014PU-N**

### JPH3 (C-term) Rabbit Polyclonal Antibody

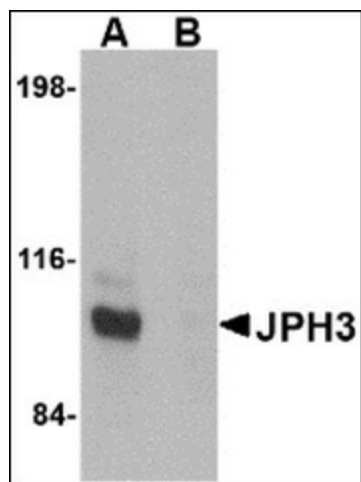
#### Product data:

Product Type:	Primary Antibodies
Applications:	ELISA, IHC, WB
Recommended Dilution:	<b>ELISA.</b> <b>Immunohistochemistry on Paraffin Sections:</b> 5 µg/ml. <b>Western Blot:</b> 1 - 2 µg/ml.
Reactivity:	Human, Mouse, Rat
Host:	Rabbit
Clonality:	Polyclonal
Immunogen:	Synthetic peptide of 18 amino acid peptide near the carboxy terminus of human JPH3
Specificity:	This antibody detects Junctophilin-3 / JPH3 (C-term).
Formulation:	PBS containing 0.02% sodium azide State: Purified State: Liquid Ig fraction
Concentration:	lot specific
Purification:	Immunoaffinity Chromatography
Conjugation:	Unconjugated
Storage:	Store the antibody at 2 - 8 °C. DO NOT FREEZE!
Stability:	Shelf life: one year from despatch.
Gene Name:	junctophilin 3
Database Link:	<a href="#">Entrez Gene 57340 Mouse</a> <a href="#">Entrez Gene 307916 Rat</a> <a href="#">Entrez Gene 57338 Human</a> <a href="#">Q8WXH2</a>
Synonyms:	JP3, TNRC22
Protein Families:	Druggable Genome, Transmembrane

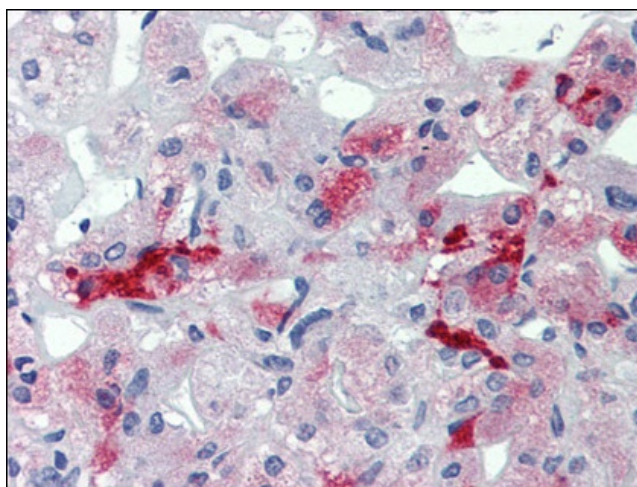


[View online »](#)

## Product images:



Western Blot Image: Western blot analysis of JPH3 in Daudi cell lysate with JPH3 antibody at 1 ug/ml in (A) the absence and (B) the presence of blocking peptide



Immunohistochemistry Image: Human Adrenal: Formalin-Fixed, Paraffin-Embedded (FFPE)