

Product datasheet for **AP23013PU-N**

Junctophilin 2 (JPH2) (C-term) Rabbit Polyclonal Antibody

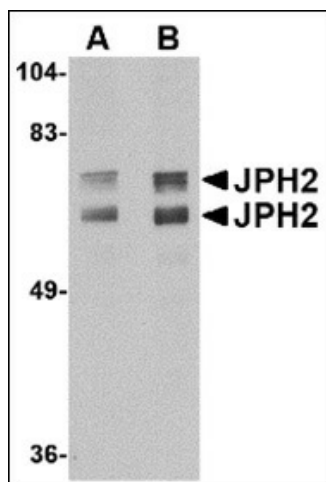
Product data:

Product Type:	Primary Antibodies
Applications:	ELISA, IHC, WB
Recommended Dilution:	ELISA. Immunohistochemistry on Paraffin Sections: 5 µg/ml. Western Blot: 1 - 2 µg/ml.
Reactivity:	Human, Mouse, Rat
Host:	Rabbit
Clonality:	Polyclonal
Immunogen:	Synthetic peptide of 17 amino acid near the carboxy terminus of human JPH2
Specificity:	This antibody detects Junctophilin-2 / JPH2 (C-term).
Formulation:	PBS containing 0.02% sodium azide as preservative State: Purified State: Liquid purified Ig fraction
Concentration:	lot specific
Purification:	Immunoaffinity Chromatography
Conjugation:	Unconjugated
Storage:	Store at 2 - 8 °C for up to one month or (in aliquots) at -20 °C for longer. Avoid repeated freezing and thawing.
Stability:	Shelf life: one year from despatch.
Gene Name:	junctophilin 2
Database Link:	Entrez Gene 59091 Mouse Entrez Gene 296345 Rat Entrez Gene 57158 Human Q9BR39
Synonyms:	JP2
Protein Families:	Transmembrane

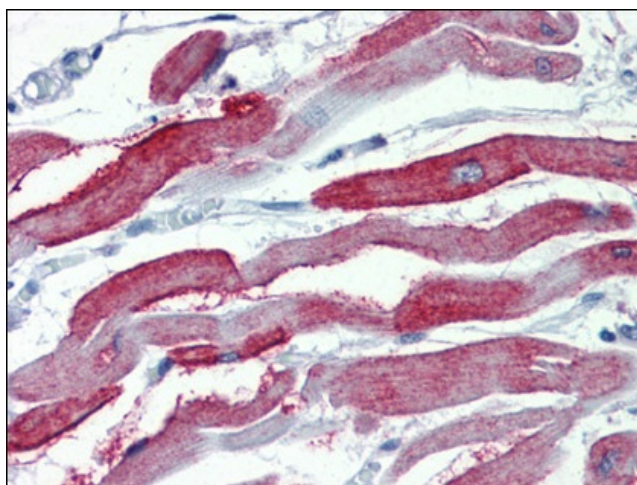


[View online »](#)

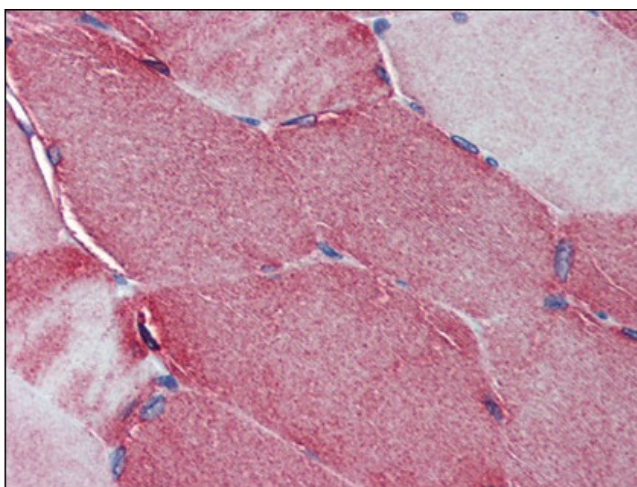
Product images:



Western blot analysis of JPH2 in mouse brain tissue lysate with JPH2 antibody at (A) 1 and (B) 2 ug/ml



Immunohistochemistry Image: Human Heart: Formalin-Fixed, Paraffin-Embedded (FFPE)



Immunohistochemistry Image: Human Skeletal Muscle: Formalin-Fixed, Paraffin-Embedded (FFPE)