

## Product datasheet for **AP23006PU-N**

### **NIPSNAP3B Rabbit Polyclonal Antibody**

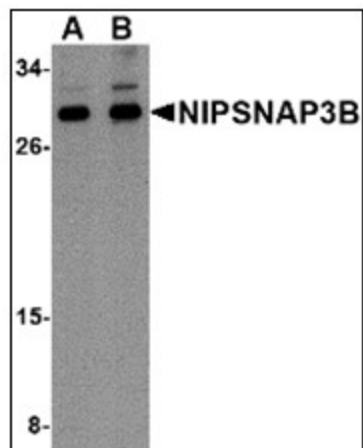
#### **Product data:**

|                       |   |
|-----------------------|---|
| Product Type:         | Primary Antibodies  |
| Applications:         | ELISA, IHC, WB  |
| Recommended Dilution: | <b>ELISA.</b><br><b>Immunohistochemistry on Paraffin Sections:</b> 5 µg/ml.<br><b>Western Blot:</b> 1 - 2 µg/ml.                        |
| Reactivity:           | Human, Mouse  |
| Host:                 | Rabbit  |
| Clonality:            | Polyclonal  |
| Immunogen:            | NIPSNAP3B antibody was raised against nipsnap3B antibody was raised against a 16 amino acid peptide near the center of human NIPSNAP3B. |
| Specificity:          | This antibody reacts to Nipsnap Homolog 3B (C. Elegans) (NIPSNAP3B).  |
| Formulation:          | PBS containing 0.02% sodium azide<br>State: Purified<br>State: Liquid purified Ig fraction  |
| Concentration:        | lot specific  |
| Purification:         | Immunoaffinity Chromatography   |
| Conjugation:          | Unconjugated  |
| Storage:              | Store the antibody undiluted at 2-8°C.  |
| Stability:            | Shelf life: one year from despatch.   |
| Gene Name:            | nipsnap homolog 3B  |
| Database Link:        | <a href="#">Entrez Gene 66536 Mouse</a> <a href="#">Entrez Gene 55335 Human</a><br><a href="#">Q9BS92</a>                               |
| Synonyms:             | FLJ11275; NIPSNAP3; SNAP1   |

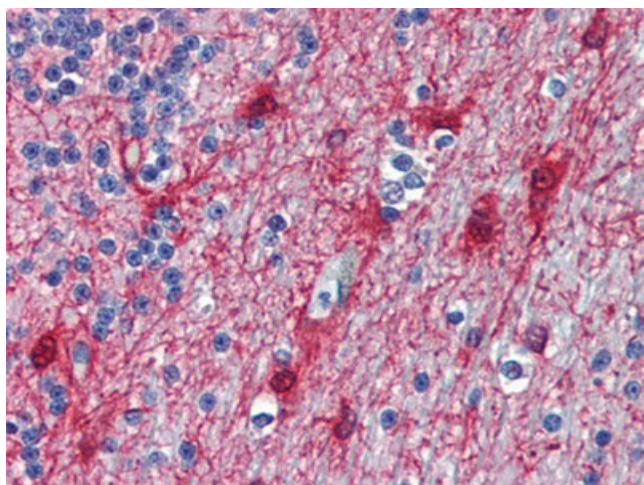


[View online »](#)

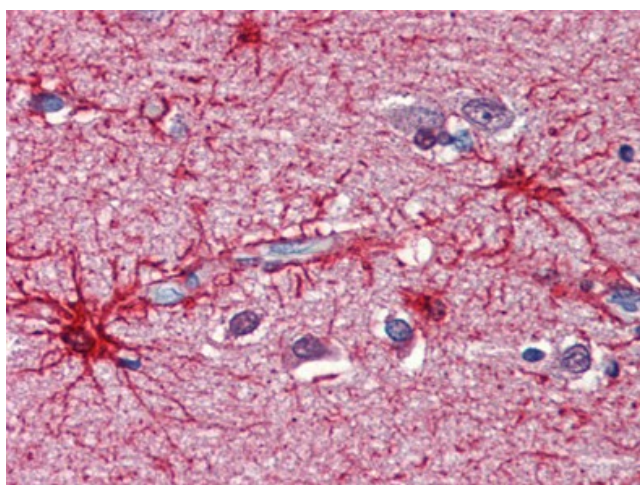
## Product images:



Western blot analysis of NIPSNAP3B in mouse brain tissue lysate with NIPSNAP3B antibody (AP23006PU-N) at (A) 1 and (B) 2  $\mu\text{g/ml}$



Human Brain, Cerebellum: Formalin-Fixed, Paraffin-Embedded (FFPE)



Human Brain, Cortex: Formalin-Fixed, Paraffin-Embedded (FFPE)