

## Product datasheet for **AP23005PU-N**

### **PYURF Rabbit Polyclonal Antibody**

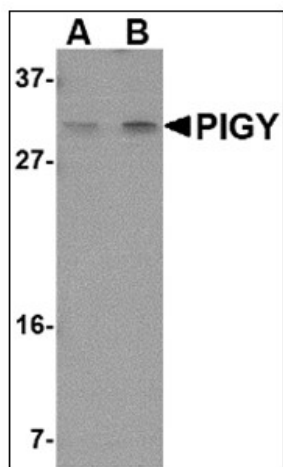
#### **Product data:**

Product Type:	Primary Antibodies
Applications:	ELISA, IHC, WB
Recommended Dilution:	<b>ELISA.</b> <b>Immunohistochemistry on Paraffin Sections:</b> 5 µg/ml. <b>Western Blot:</b> 1 - 2 µg/ml.
Reactivity:	Human, Mouse
Host:	Rabbit
Clonality:	Polyclonal
Immunogen:	PIGY antibody was raised against pIG-Y antibody was raised against a 16 amino acid peptide near the center of human PIG-Y.
Specificity:	This antibody reacts to Phosphatidylinositol Glycan Anchor Biosynthesis, Class Y (PIGY).
Formulation:	PBS containing 0.02% sodium azide State: Purified State: Liquid purified Ig fraction
Concentration:	lot specific
Purification:	Immunoaffinity Chromatography
Conjugation:	Unconjugated
Storage:	Store the antibody undiluted at 2-8°C for one month or (in aliquots) at -20°C for longer. Avoid repeated freezing and thawing.
Stability:	Shelf life: one year from despatch.
Gene Name:	PIGY upstream open reading frame
Database Link:	<a href="#">Entrez Gene 100996939 Human Q96I23</a>
Synonyms:	PIGY, MGC14156, PIG-Y, PREY

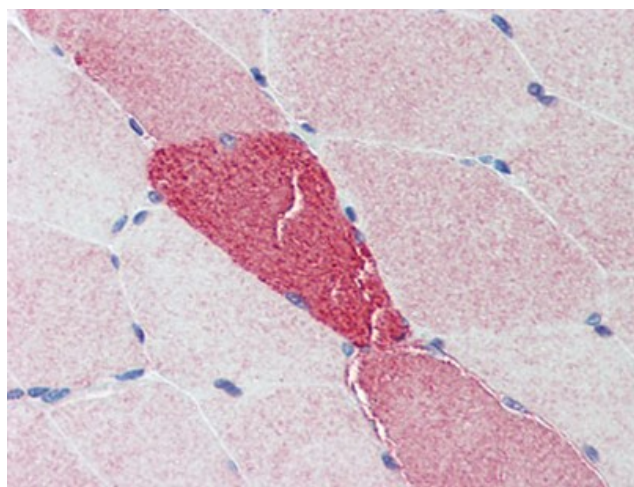


[View online »](#)

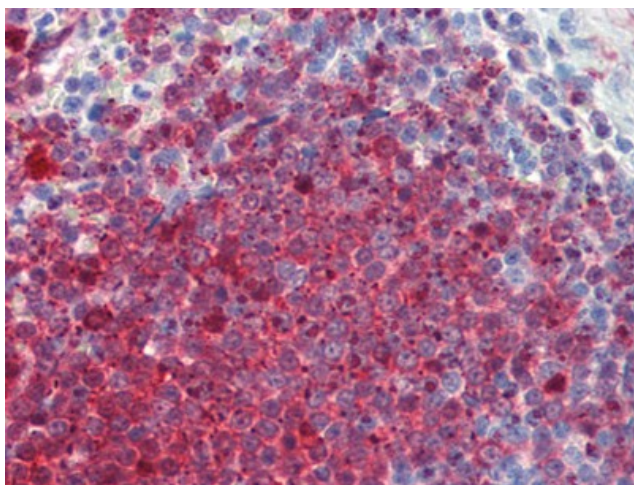
## Product images:



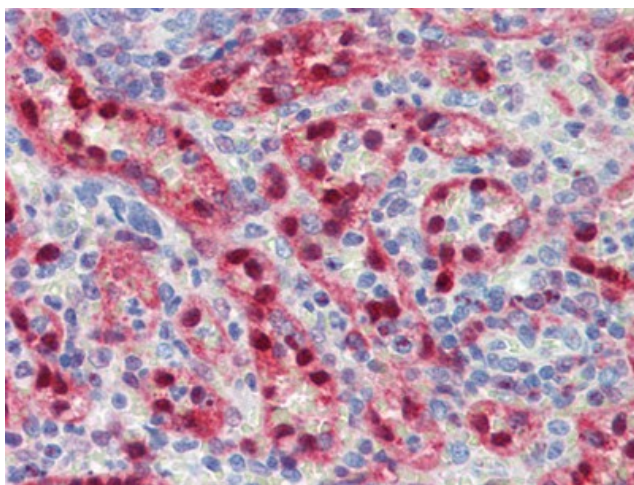
Western blot analysis of PIG-Y in human spleen tissue lysate with PIG-Y antibody (AP23005PU-N) at (A) 1 and (B) 2 ug/ml



Human Skeletal Muscle: Formalin-Fixed, Paraffin-Embedded (FFPE)



Human Spleen: Formalin-Fixed, Paraffin-Embedded (FFPE)



Human Spleen: Formalin-Fixed, Paraffin-Embedded (FFPE)