

## Product datasheet for **AP23002PU-N**

### **METTL7B (N-term) Rabbit Polyclonal Antibody**

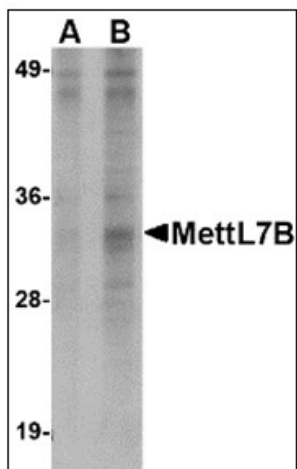
#### Product data:

Product Type:	Primary Antibodies
Applications:	ELISA, IHC, WB
Recommended Dilution:	<b>ELISA.</b> <b>Immunohistochemistry on Paraffin Sections:</b> 5 µg/ml. <b>Western Blot:</b> 2 - 4 µg/ml.
Reactivity:	Human, Mouse
Host:	Rabbit
Clonality:	Polyclonal
Immunogen:	METTL7B antibody was raised against mettl7B antibody was raised against a 13 amino acid peptide near the amino terminus of human Mettl7B.
Specificity:	This antibody reacts to Methyltransferase Like 7B (METTL7B).
Formulation:	PBS containing 0.02% sodium azide State: Purified State: Liquid purified Ig fraction
Concentration:	lot specific
Purification:	Immunoaffinity Chromatography
Conjugation:	Unconjugated
Storage:	Store the antibody undiluted at 2-8°C for one month or (in aliquots) at -20°C for longer. Avoid repeated freezing and thawing.
Stability:	Shelf life: one year from despatch.
Gene Name:	methyltransferase like 7B
Database Link:	<a href="#">Entrez Gene 71664 Mouse</a> <a href="#">Entrez Gene 196410 Human</a> <a href="#">Q6UX53</a>
Synonyms:	Methyltransferase-like protein 7B, UNQ594/PRO1180
Protein Families:	Druggable Genome, Transmembrane

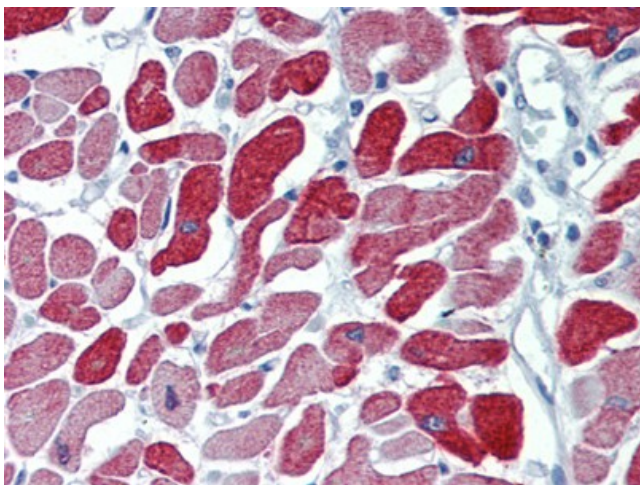


[View online »](#)

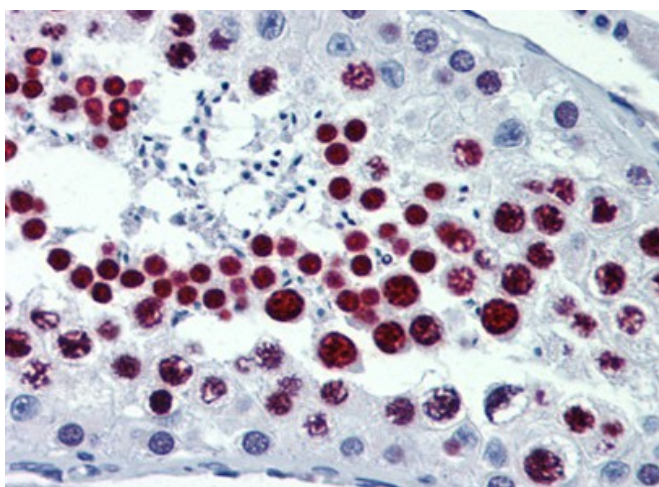
## Product images:



Western blot analysis of Mettl7B in Jurkat lysate with Mettl7B antibody (AP23002PU-N) at (A) 2 and (B) 4 ug/ml



Human Heart: Formalin-Fixed, Paraffin-Embedded (FFPE)



Human Testis: Formalin-Fixed, Paraffin-Embedded (FFPE)