

Product datasheet for **AP23001PU-N**

METTL7A Rabbit Polyclonal Antibody

Product data:

Product Type:	Primary Antibodies
Applications:	ELISA, IF, IHC, WB
Recommended Dilution:	ELISA. Immunocytochemistry: 2 µg/ml. Immunohistochemistry on Paraffin Sections: 5 µg/ml. Western Blot: 2 - 4 µg/ml.
Reactivity:	Human, Mouse
Host:	Rabbit
Clonality:	Polyclonal
Immunogen:	METTL7A antibody was raised against mettl7A antibody was raised against a 13 amino acid peptide near the center of Human Mettl7A.
Specificity:	This antibody recognizes Mettl7A at C-term and is predicted to not cross-react with Mettl7B. At least two isoforms of Mettl7A are known to exist.
Formulation:	PBS containing 0.02% Sodium Azide State: Purified State: Liquid purified Ig fraction
Concentration:	lot specific
Purification:	Immunoaffinity Chromatography
Conjugation:	Unconjugated
Storage:	Store the antibody undiluted at 2-8°C for one month or (in aliquots) at -20°C for longer. Avoid repeated freezing and thawing.
Stability:	Shelf life: one year from despatch.
Gene Name:	methyltransferase like 7A
Database Link:	Entrez Gene 25840 Human Q9H8H3



[View online »](#)

Background:

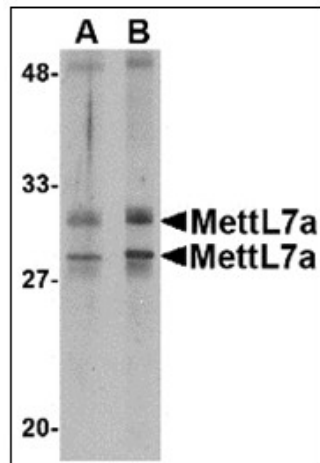
MettL7A belongs to the methyltransferase superfamily. It is a probable methyltransferase. Methyltransferase is a type of transferase enzyme which transfers a methyl group from a donor to an acceptor. Often methylation occurs on nucleic bases in DNA or amino acids in protein structures. DNA methylation is often utilized to silence and regulate genes without changing the original DNA sequence. DNA methylation may be necessary for normal growth from embryonic stages in mammals. When mutant embryonic stem cells lacking the murine DNA methyltransferase gene were introduced to a germline of mice they caused a recessive lethal phenotype. Methylation may also be linked to cancer development as methylation of tumor suppressor genes promotes tumorigenesis and metastasis. At least two isoforms of MettL7A are known to exist.

Synonyms:

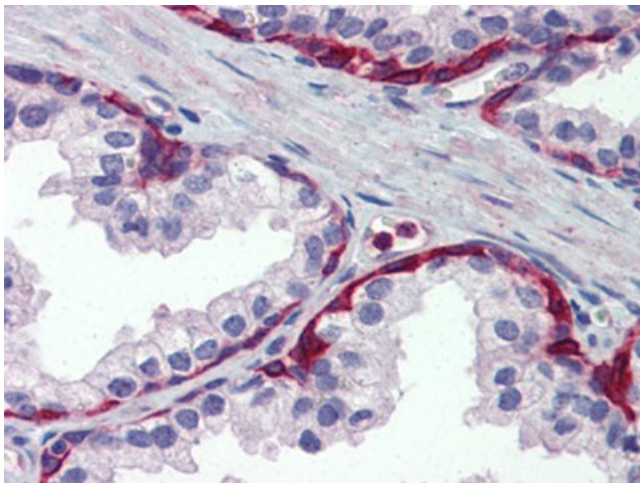
Methyltransferase-like protein 7A, PRO0066, UNQ1902/PRO4348

Protein Families:

Druggable Genome, Transmembrane

Product images:

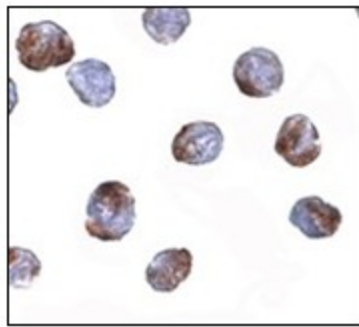
Western blot analysis of MettL7A in MCF cell lysate with MettL7A antibody at 2 ug/ml



Human Prostate: Formalin-Fixed, Paraffin-Embedded (FFPE)



Human Skin: Formalin-Fixed, Paraffin-Embedded (FFPE)



Immunocytochemistry in MCF7 cells with MettL7a antibody at 2 ug/ml.