

Product datasheet for **AP23000PU-N**

MARCH8 (C-term) Rabbit Polyclonal Antibody

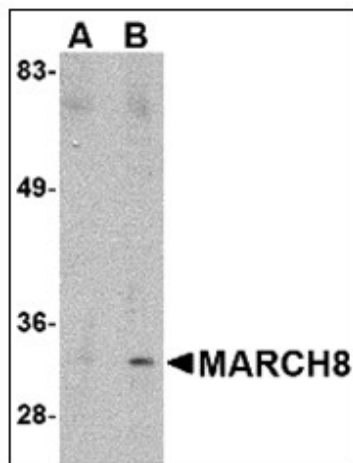
Product data:

Product Type:	Primary Antibodies
Applications:	ELISA, IF, IHC, WB
Recommended Dilution:	ELISA: Immunocytochemistry: 2.5 µg/ml. Immunohistochemistry on Paraffin Sections: 5 µg/ml. Western Blot: 0.5 - 1 µg/ml.
Reactivity:	Human, Mouse, Rat
Host:	Rabbit
Clonality:	Polyclonal
Immunogen:	MARCH8 antibody was raised against mARCH8 antibody was raised against a 17 amino acid peptide from near the carboxy terminus of human MARCH8.
Specificity:	This antibody reacts to Membrane-Associated Ring Finger (C3HC4) 8 (MARCH8).
Formulation:	PBS containing 0.02% sodium azide State: Purified State: Liquid purified Ig fraction
Concentration:	lot specific
Purification:	Immunoaffinity Chromatography
Conjugation:	Unconjugated
Storage:	Store the antibody undiluted at 2-8°C for one month or (in aliquots) at -20°C for longer. Avoid repeated freezing and thawing.
Stability:	Shelf life: one year from despatch.
Gene Name:	membrane associated ring-CH-type finger 8
Database Link:	Entrez Gene 71779 Mouse Entrez Gene 312656 Rat Entrez Gene 220972 Human Q5T0T0
Synonyms:	MARCH-VIII, c-MIR, Membrane-associated RING finger protein 8, RNF178
Protein Families:	Druggable Genome, Transmembrane

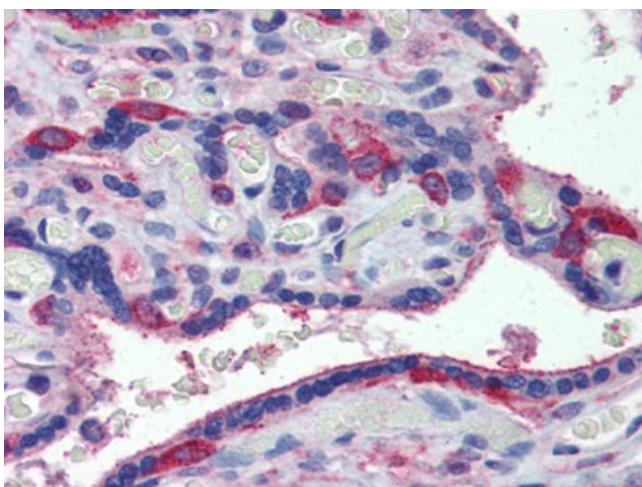


[View online »](#)

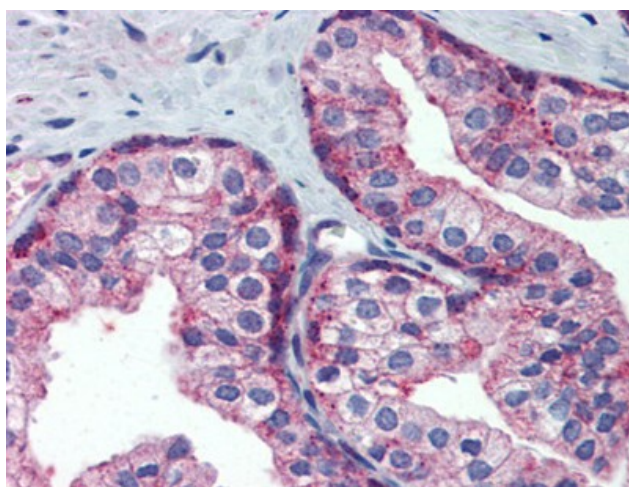
Product images:



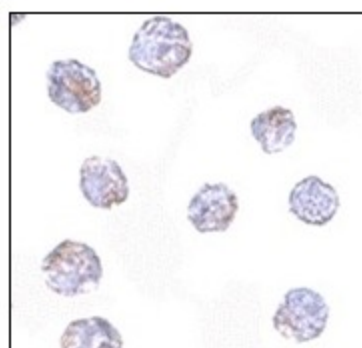
Western blot analysis of MARCH8 in HeLa cell lysate with MARCH8 antibody (AP23000PU-N) at (A) 0.5 ug/ml and (B) 1 ug/ml



Human Placenta: Formalin-Fixed, Paraffin-Embedded (FFPE)



Human Prostate: Formalin-Fixed, Paraffin-Embedded (FFPE)



Immunocytochemistry in HeLa cells with MARCH8 antibody (AP23000PU-N) at 2.5 ug/ml.