

## Product datasheet for **AP22999PU-N**

### **METTL7B (C-term) Rabbit Polyclonal Antibody**

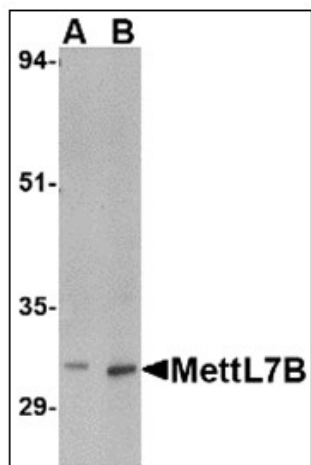
#### **Product data:**

|                       |   |
|-----------------------|---|
| Product Type:         | Primary Antibodies  |
| Applications:         | ELISA, IHC, WB  |
| Recommended Dilution: | <b>ELISA.</b><br><b>Immunohistochemistry on Paraffin Sections:</b> 10 µg/ml.<br><b>Western Blot:</b> 2 - 4 µg/ml.                                 |
| Reactivity:           | Human, Mouse, Rat   |
| Host:                 | Rabbit  |
| Clonality:            | Polyclonal  |
| Immunogen:            | METTL7B antibody was raised against mettl7B antibody was raised against a 16 amino acid peptide near the carboxy terminus of human Mettl7B.       |
| Specificity:          | This antibody reacts to Methyltransferase Like 7B (METTL7B).  |
| Formulation:          | PBS containing 0.02% sodium azide<br>State: Purified<br>State: Liquid purified Ig fraction  |
| Concentration:        | lot specific  |
| Purification:         | Immunoaffinity Chromatography   |
| Conjugation:          | Unconjugated  |
| Storage:              | Store the antibody undiluted at 2-8°C for one month or (in aliquots) at -20°C for longer.<br>Avoid repeated freezing and thawing.                 |
| Stability:            | Shelf life: one year from despatch.   |
| Gene Name:            | methyltransferase like 7B   |
| Database Link:        | <a href="#">Entrez Gene 71664 Mouse</a> <a href="#">Entrez Gene 366792 Rat</a> <a href="#">Entrez Gene 196410 Human</a><br><a href="#">Q6UX53</a> |
| Synonyms:             | Methyltransferase-like protein 7B, UNQ594/PRO1180   |
| Protein Families:     | Druggable Genome, Transmembrane   |

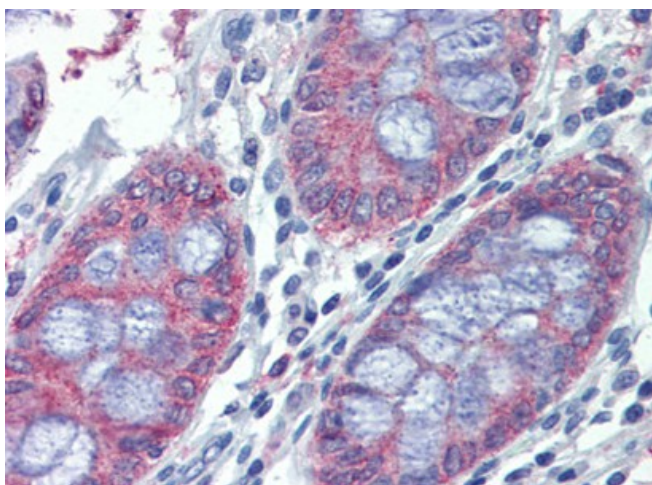


[View online »](#)

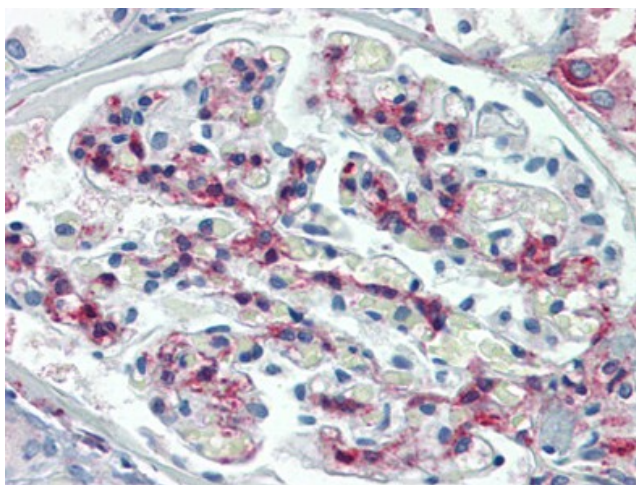
## Product images:



Western blot analysis of MettL7B in rat spleen tissue lysate with MettL7B antibody (AP22999PU-N) at (A) 2 and (B) 4 ug/ml



Human Colon: Formalin-Fixed, Paraffin-Embedded (FFPE)



Human Kidney: Formalin-Fixed, Paraffin-Embedded (FFPE)