

Product datasheet for **AP22997PU-N**

DACT2 (N-term) Rabbit Polyclonal Antibody

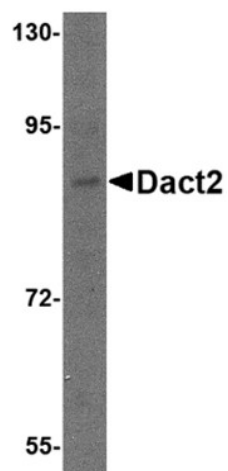
Product data:

Product Type:	Primary Antibodies
Applications:	ELISA, IHC, WB
Recommended Dilution:	ELISA. Immunohistochemistry on Paraffin Sections: 5 µg/ml. Western Blot: 1 - 2 µg/ml.
Reactivity:	Human, Mouse, Rat
Host:	Rabbit
Clonality:	Polyclonal
Immunogen:	DACT2 antibody was raised against dact2 antibody was raised against a 12 amino acid peptide from near the amino terminus of human DACT2.
Specificity:	This antibody reacts to Dapper, Antagonist of Beta-CateninHomolog 2 (DACT2).
Formulation:	PBS containing 0.02% sodium azide State: Purified State: Liquid purified Ig fraction
Concentration:	lot specific
Purification:	Immunoaffinity Chromatography
Conjugation:	Unconjugated
Storage:	Store the antibody undiluted at 2-8°C for one month or (in aliquots) at -20°C for longer. Avoid repeated freezing and thawing.
Stability:	Shelf life: one year from despatch.
Gene Name:	dishevelled binding antagonist of beta catenin 2
Database Link:	Entrez Gene 240025 Mouse Entrez Gene 308212 Rat Entrez Gene 168002 Human Q5SW24
Synonyms:	dapper homolog 2, DAPPER2, PP13671, DPR2, C6orf116

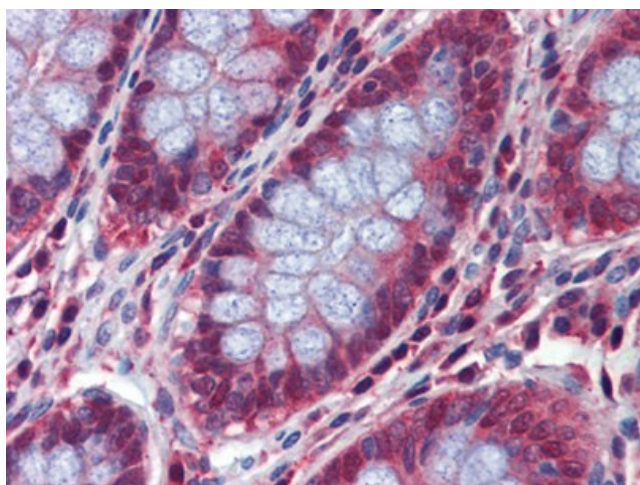


[View online »](#)

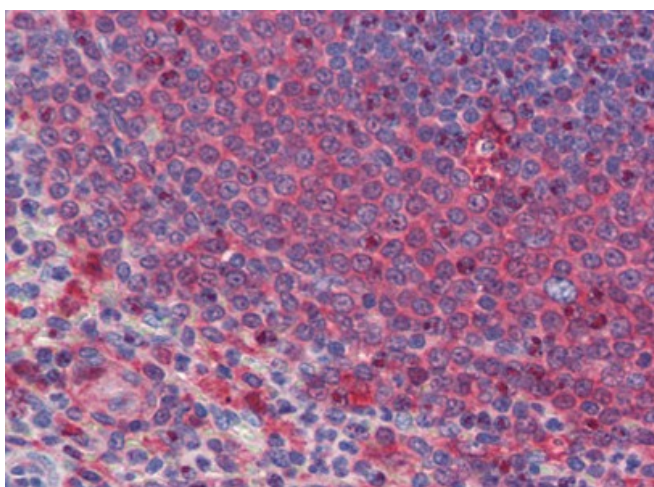
Product images:



Western blot analysis of Dact2 in SK-N-SH cell lysate with Dact2 antibody (AP22997PU-N) at 1 ug/ml



Human Colon: Formalin-Fixed, Paraffin-Embedded (FFPE)



Human Spleen: Formalin-Fixed, Paraffin-Embedded (FFPE)