

Product datasheet for **AP22996PU-N**

STK39 (C-term) Rabbit Polyclonal Antibody

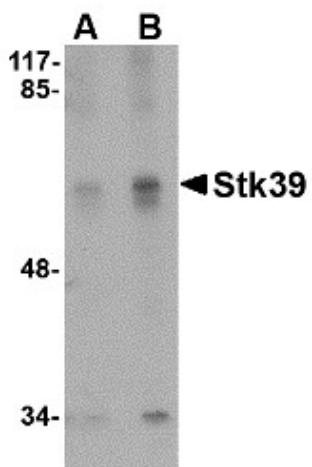
Product data:

Product Type:	Primary Antibodies
Applications:	ELISA, IHC, WB
Recommended Dilution:	ELISA. Immunohistochemistry on Paraffin Sections: 5 µg/ml. Western Blot: 1 - 2 µg/ml.
Reactivity:	Human, Mouse
Host:	Rabbit
Clonality:	Polyclonal
Immunogen:	STK39 antibody was raised against stk39 antibody was raised against a 19 amino acid peptide from near the carboxy terminus of human Stk39.
Specificity:	This antibody reacts to STE20-Related Kinase SPAK (STK39).
Formulation:	PBS containing 0.02% sodium azide State: Purified State: Liquid purified Ig fraction
Concentration:	lot specific
Purification:	Immunoaffinity Chromatography
Conjugation:	Unconjugated
Storage:	Store the antibody undiluted at 2-8°C for one month or (in aliquots) at -20°C for longer. Avoid repeated freezing and thawing.
Stability:	Shelf life: one year from despatch.
Gene Name:	serine/threonine kinase 39
Database Link:	Entrez Gene 53416 Mouse Entrez Gene 27347 Human Q9UEW8
Background:	SPAK is a member of the FRAY subfamily of serine/threonine kinases. SPAK interacts with several members of the cation-chloride cotransporters to initiate the cellular stress response.
Synonyms:	Ste-20-related kinase, DCHT
Protein Families:	Druggable Genome, Protein Kinase

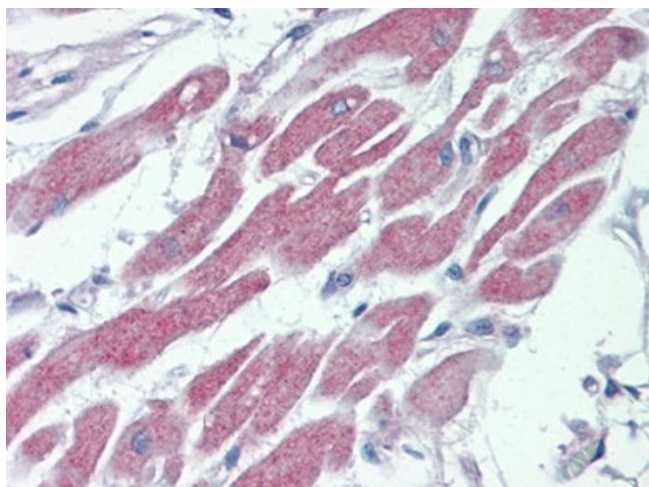


[View online »](#)

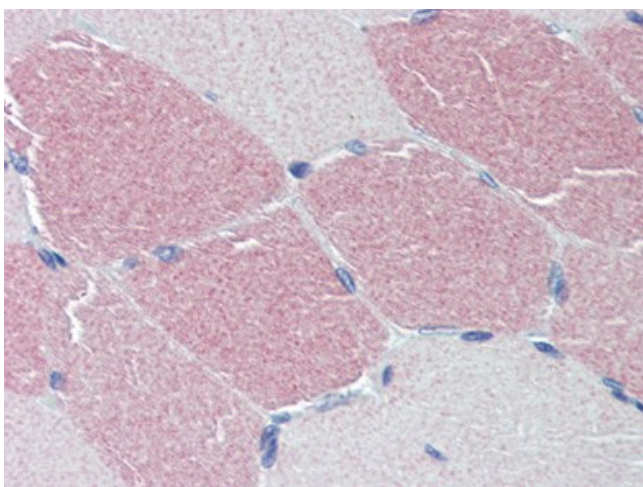
Product images:



Western blot analysis of Stk39 in SK-N-SH cell lysate with Stk39 antibody (AP22996PU-N) at (A) 1 and (B) 2 ug/ml



Human Heart: Formalin-Fixed, Paraffin-Embedded (FFPE)



Human Skeletal Muscle: Formalin-Fixed, Paraffin-Embedded (FFPE)