

Product datasheet for **AP22992PU-N**

AIPL1 (C-term) Rabbit Polyclonal Antibody

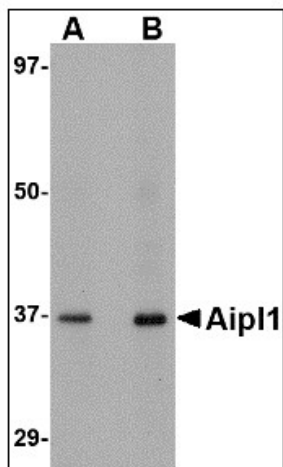
Product data:

Product Type:	Primary Antibodies
Applications:	ELISA, IHC, WB
Recommended Dilution:	ELISA. Immunohistochemistry on Paraffin Sections: 5 µg/ml. Western Blot: 1 - 2 µg/ml.
Reactivity:	Human, Mouse
Host:	Rabbit
Clonality:	Polyclonal
Immunogen:	17 amino acid syntetic peptide near the carboxy terminus of the human Aipl1.
Specificity:	This antibody reacts to Aryl Hydrocarbon Receptor-interacting Protein-like 1 (AIPL1).
Formulation:	PBS containing 0.02% sodium azide as preservative State: Purified State: Liquid purified Ig fraction
Concentration:	lot specific
Purification:	Immunoaffinity Chromatography
Conjugation:	Unconjugated
Storage:	Store the antibody undiluted at 2-8°C for one month or (in aliquots) at -20°C for longer. Avoid repeated freezing and thawing.
Stability:	Shelf life: one year from despatch.
Gene Name:	aryl hydrocarbon receptor interacting protein like 1
Database Link:	Entrez Gene 114230 Mouse Entrez Gene 23746 Human Q9NZN9
Synonyms:	AIPL2; LCA4
Protein Families:	Druggable Genome

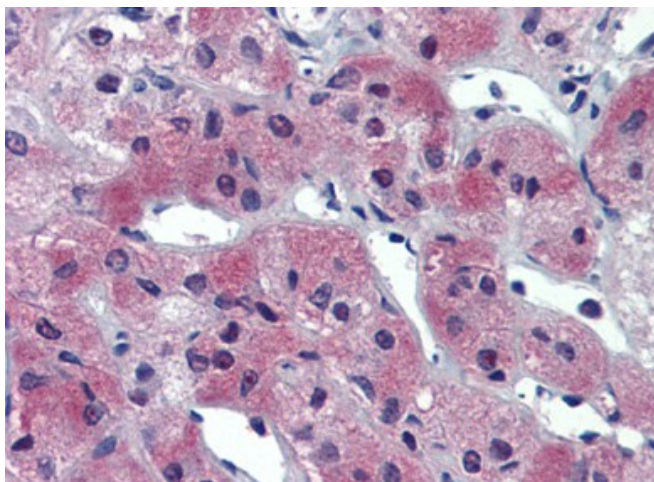


[View online »](#)

Product images:



Western blot analysis of Aipl1 in human brain tissue lysate with Aipl1 antibody at (A) 1 and (B) 2 ug/ml



Human Adrenal: Formalin-Fixed, Paraffin-Embedded (FFPE)